

6

5

4

3

2

1

D

C

B

A

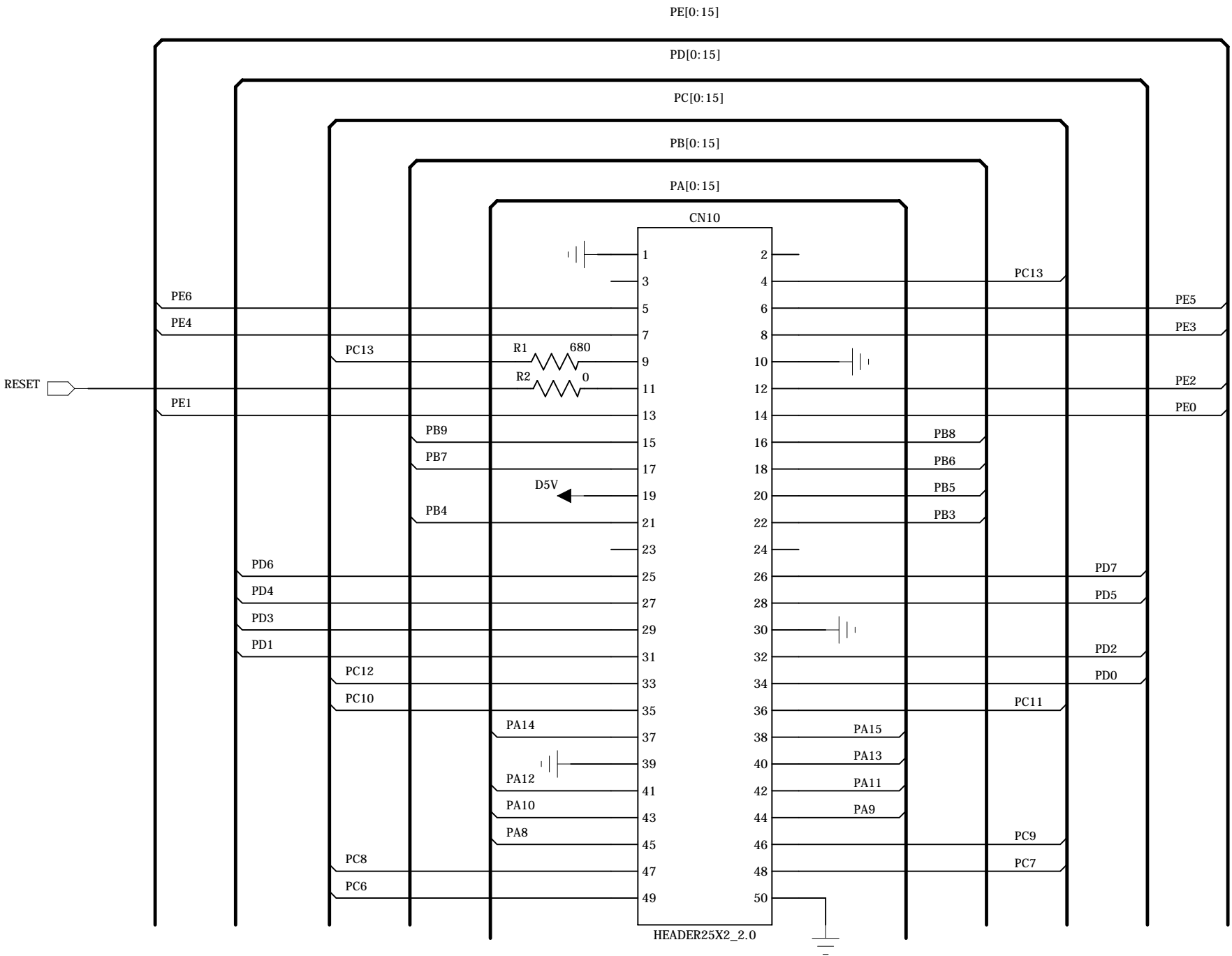
D

C

B

A

kernel connector2



6

5

4

3

2

1

D

D

C

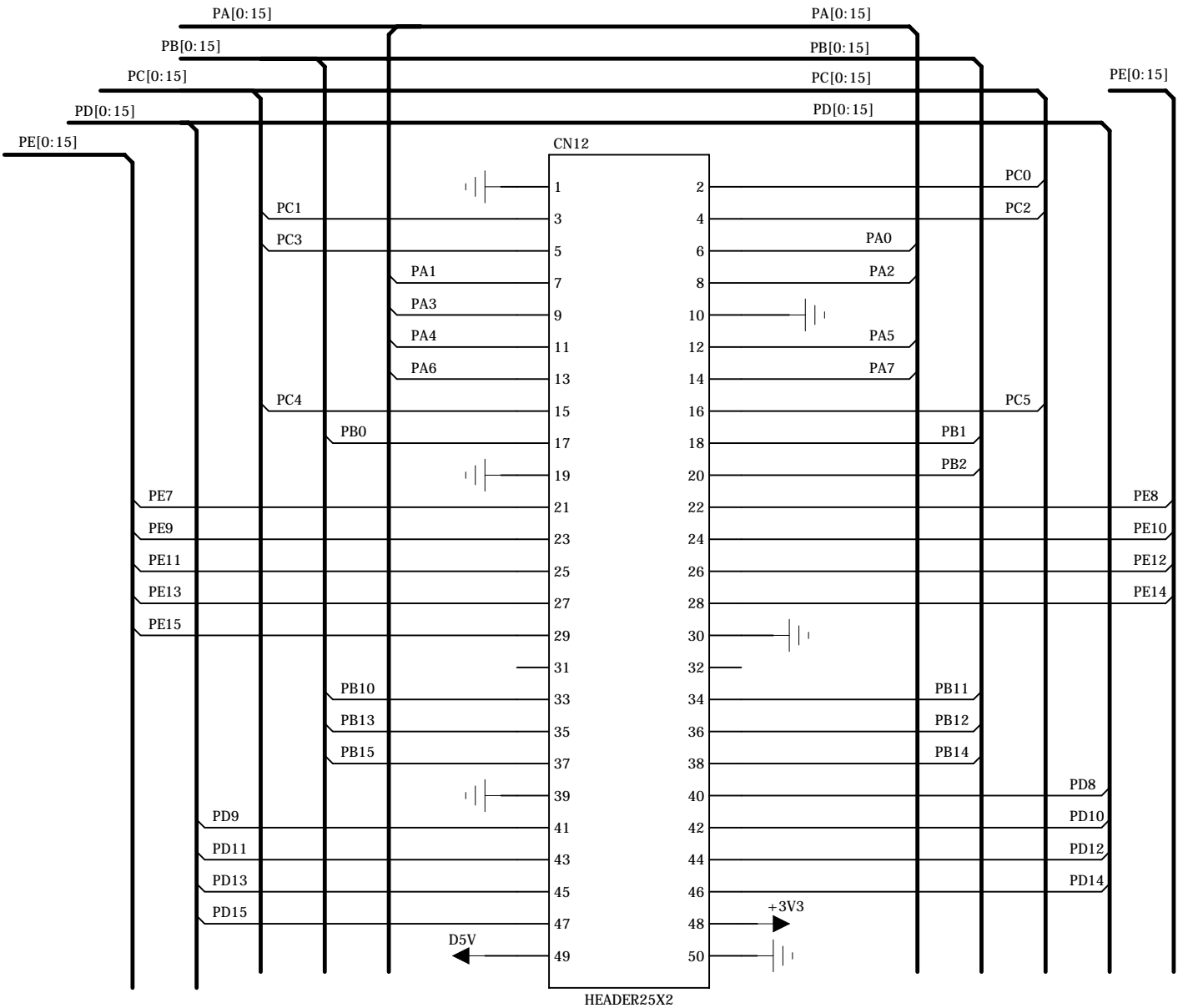
C

B

B

A

A



Extern Connector1

REV:

6

5

4

3

2

1

D

C

B

A

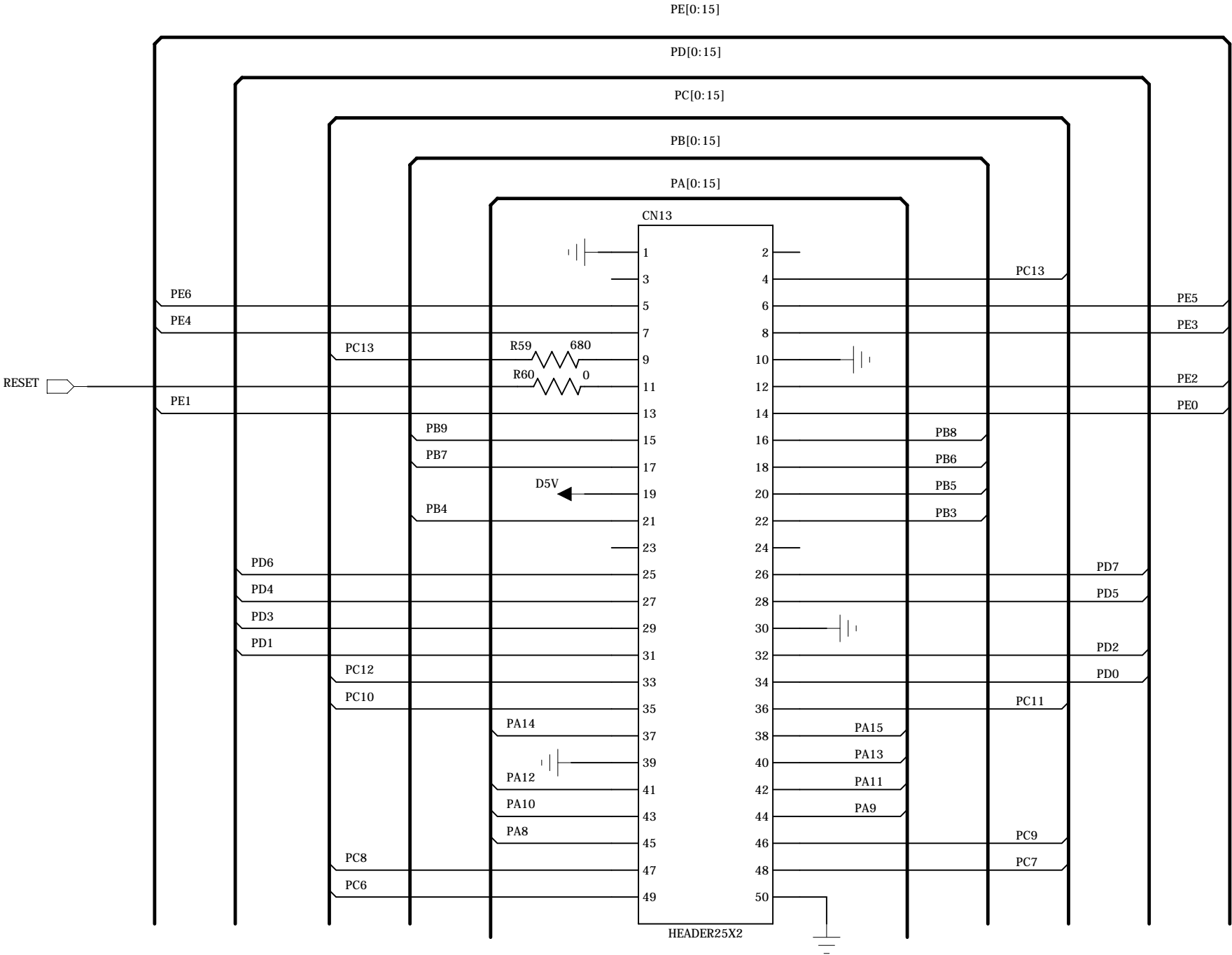
D

C

B

A

Extension connector2



6

5

4

3

2

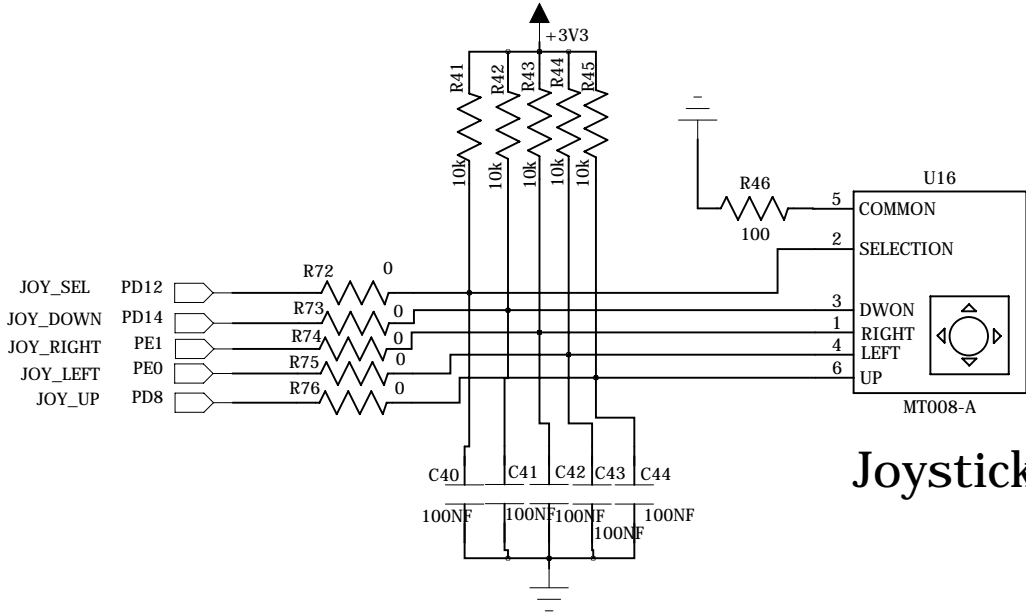
1

D

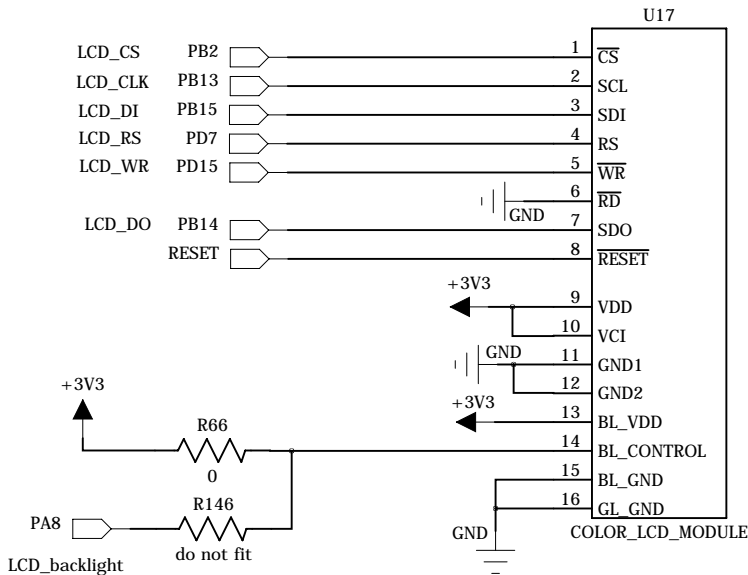
C

B

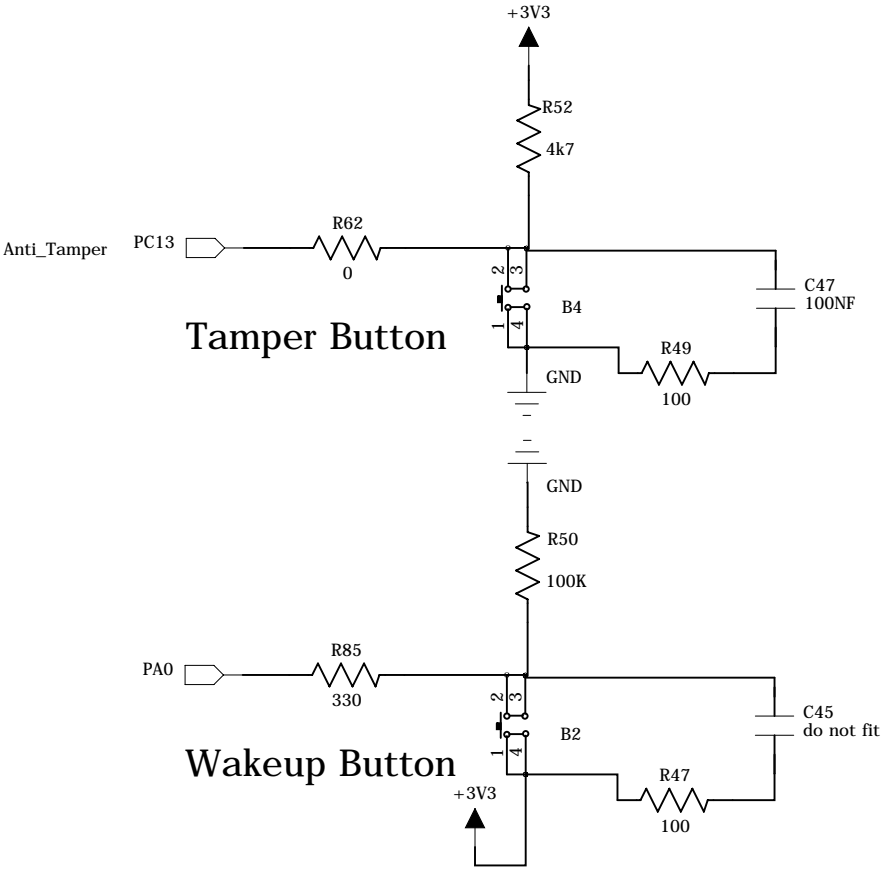
A



Joystick

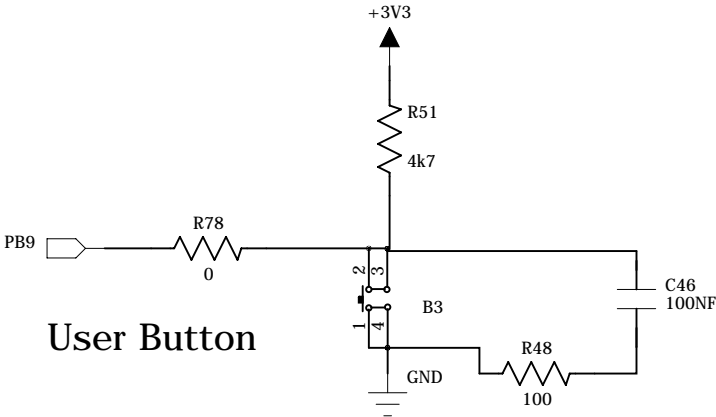
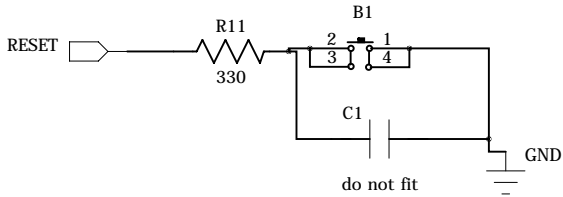


TFT LCD



Tamper Button

Wakeup Button



User Button

D

C

B

A

6

5

4

3

2

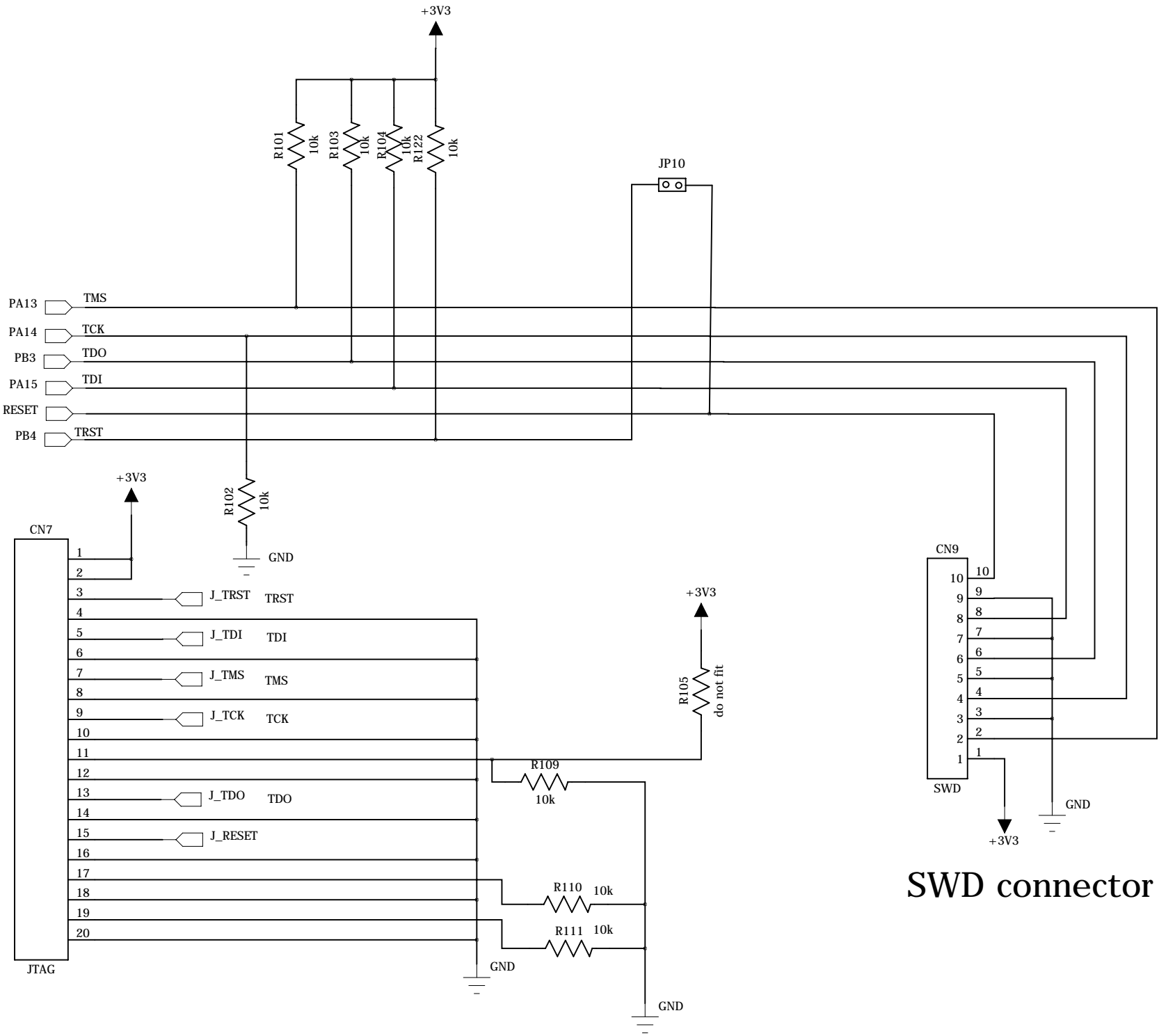
1

D

C

B

A



JTAG connector

SWD connector

REV:

6

5

4

3

2

1

D

C

B

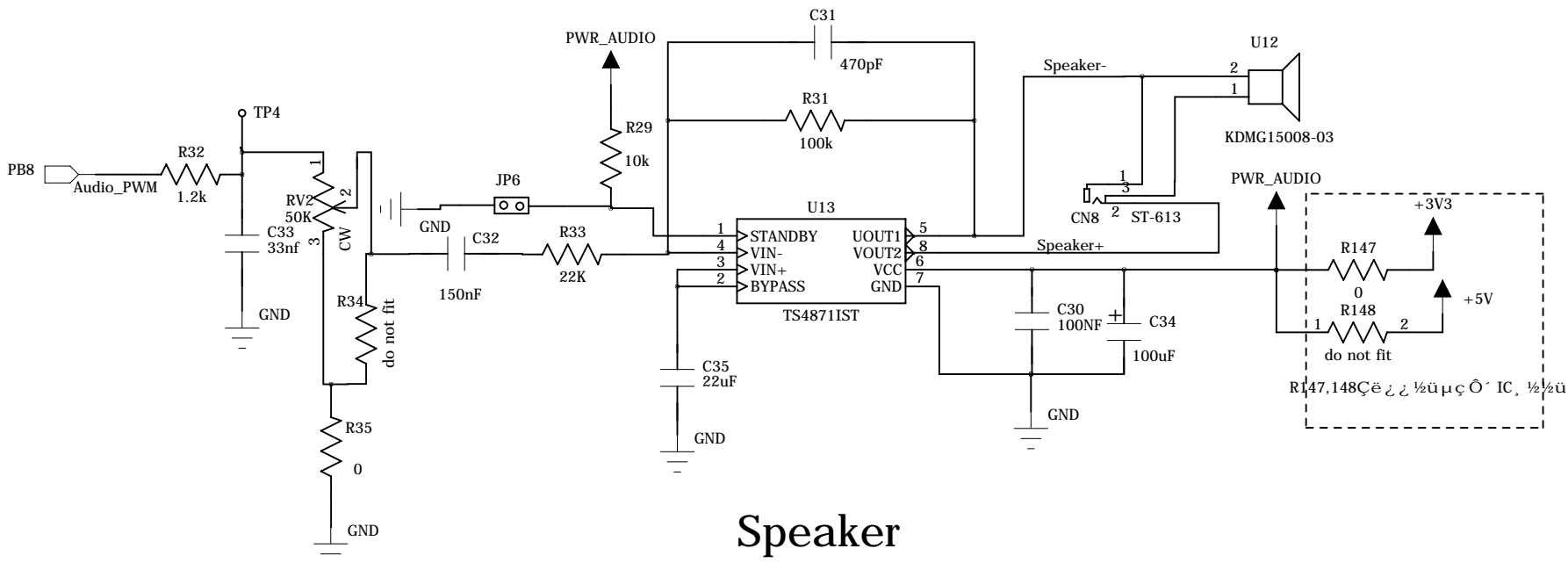
A

D

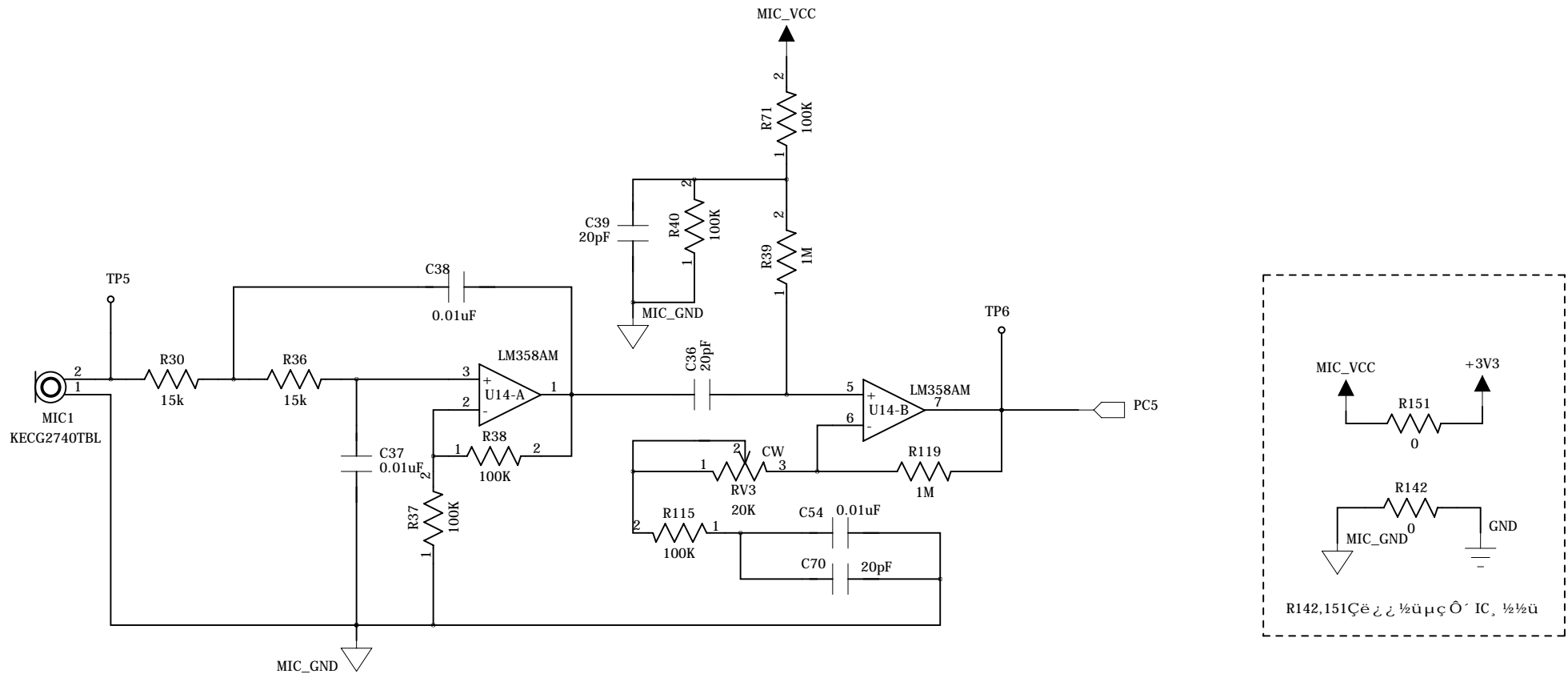
C

B

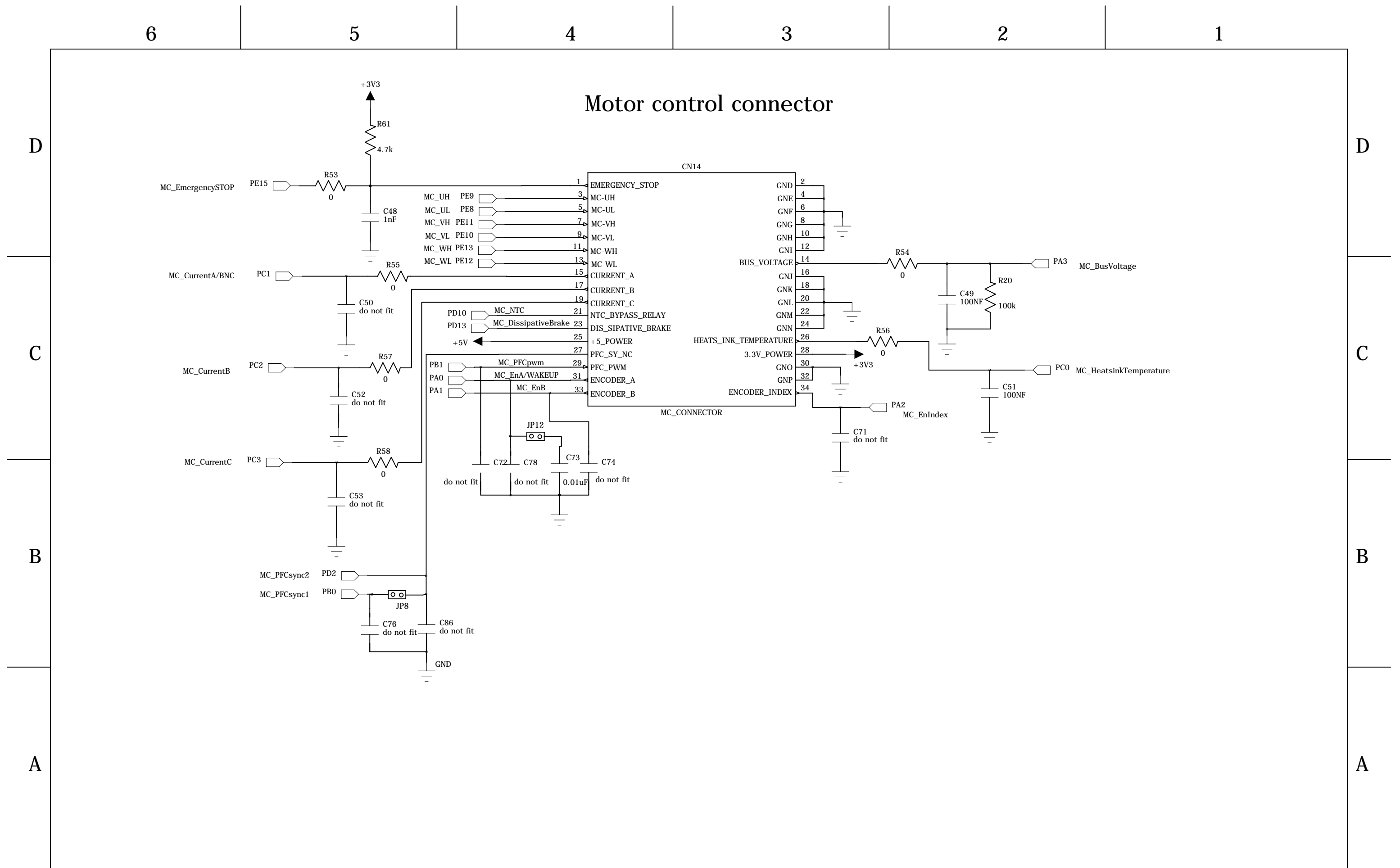
A

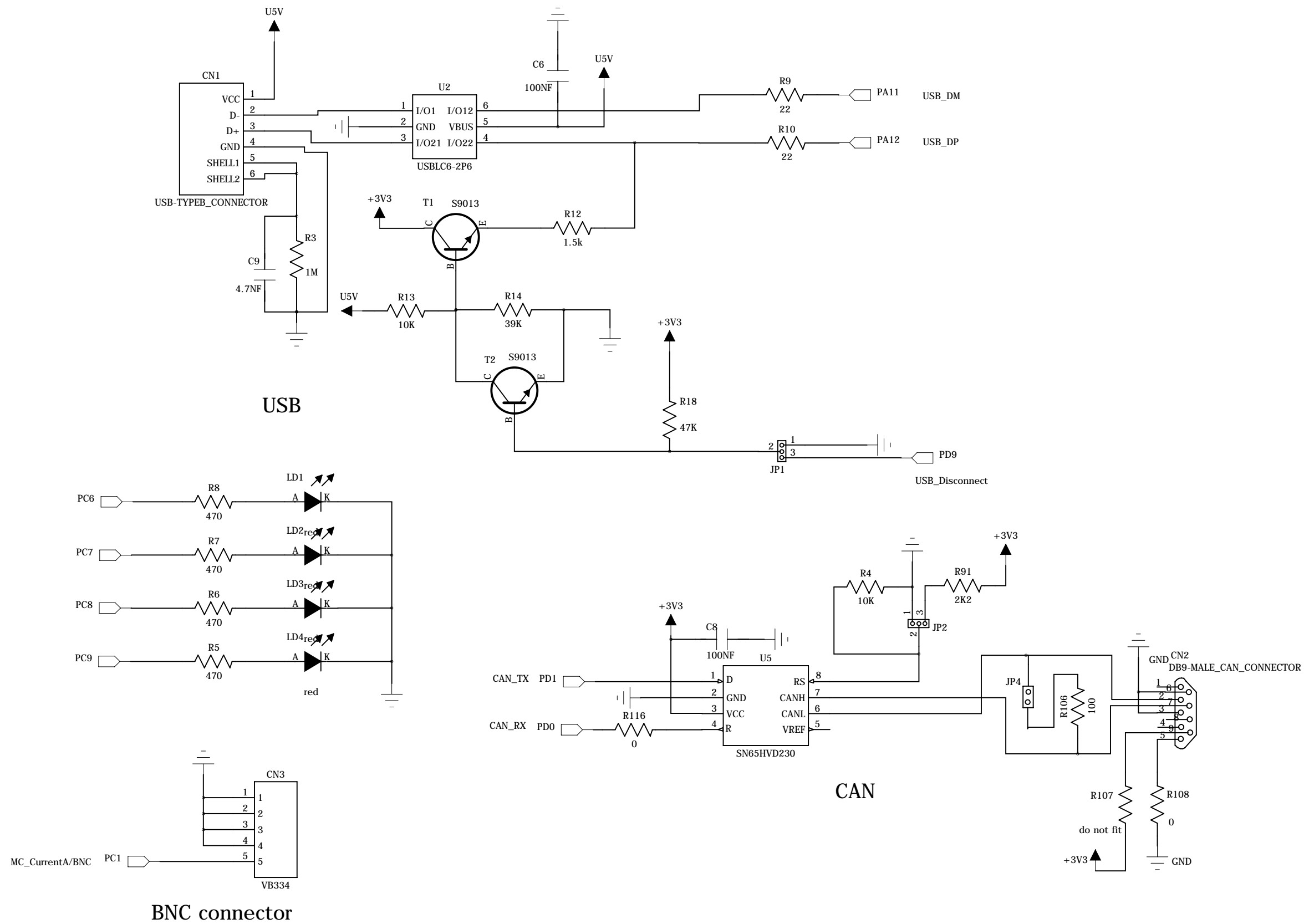


Speaker



Microphone





6

5

4

3

2

1

D

D

C

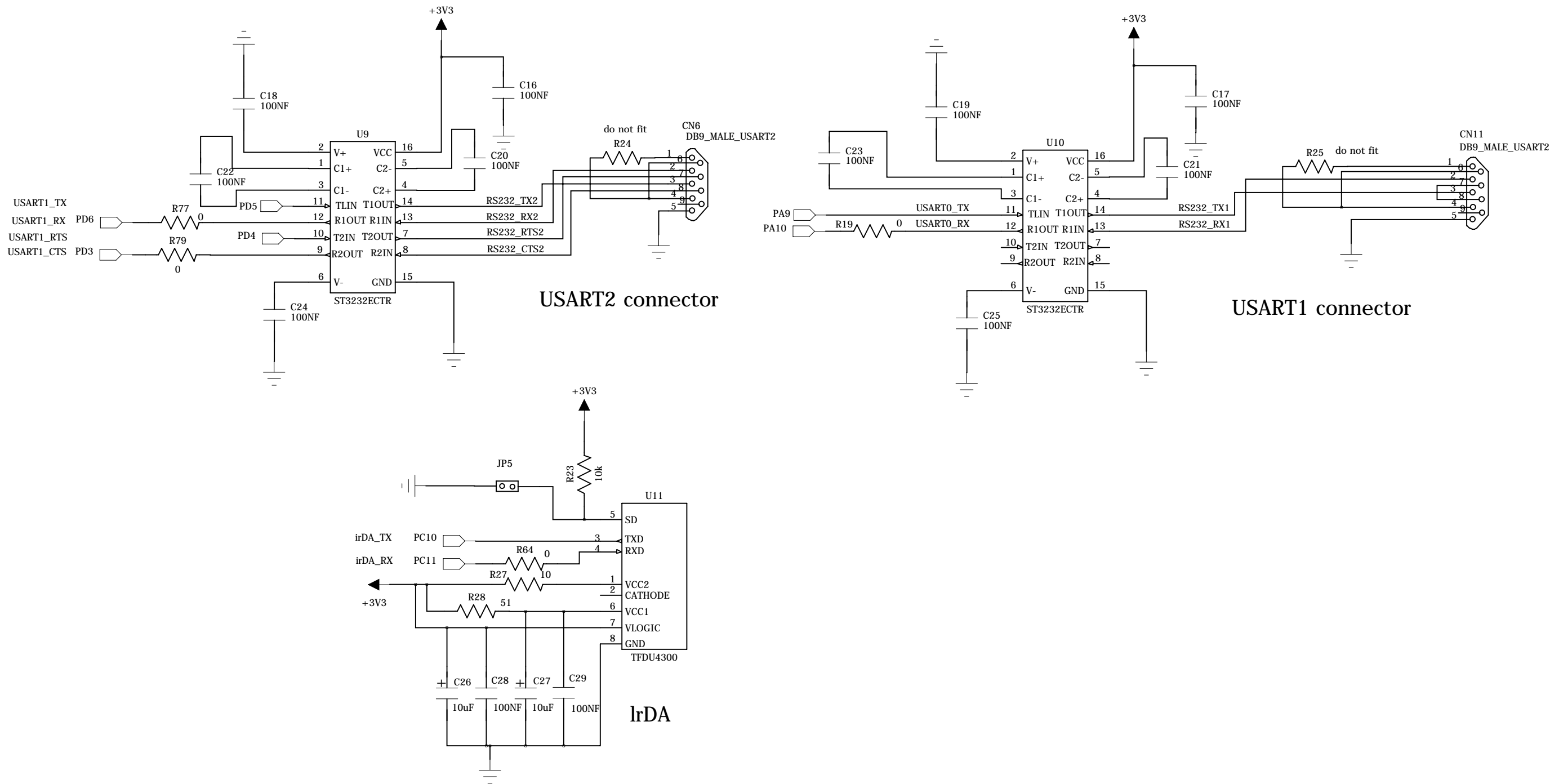
C

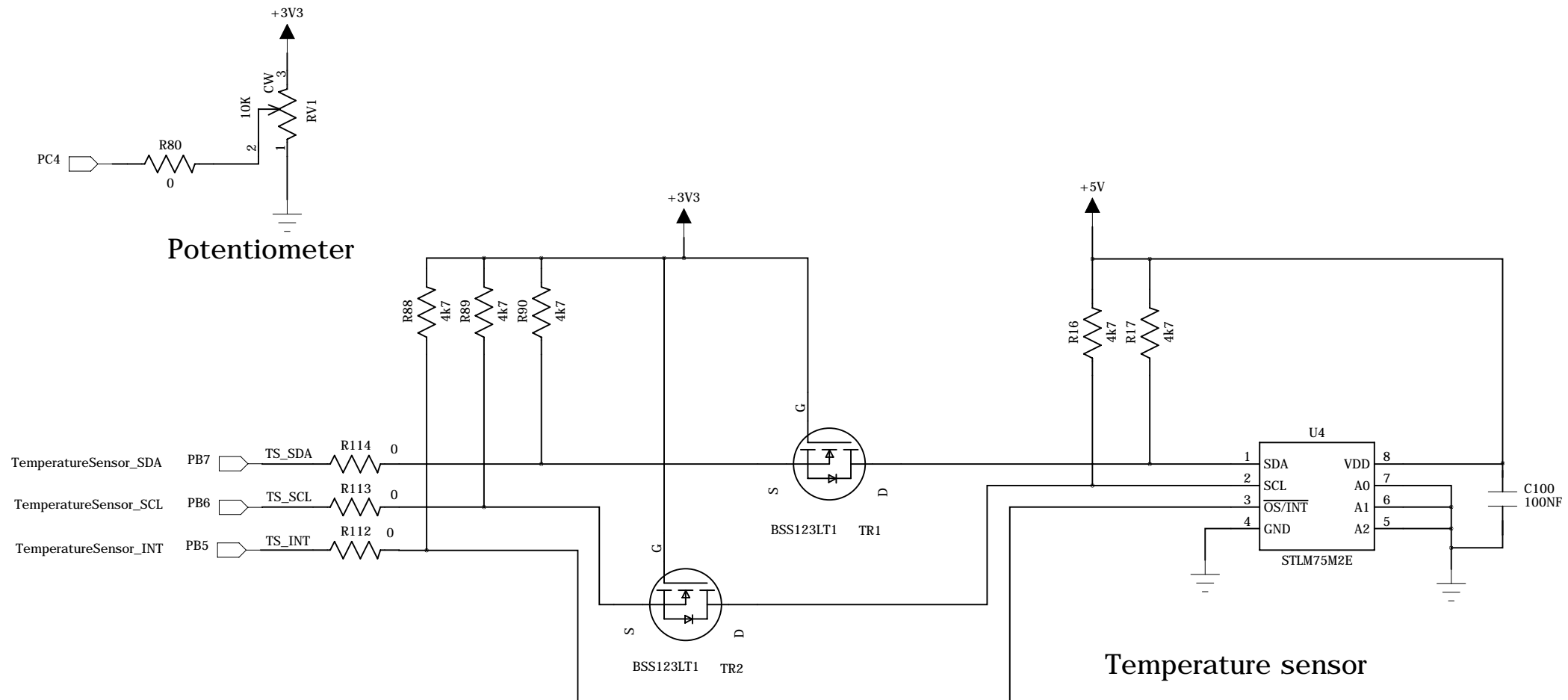
B

B

A

A





6

5

4

3

2

1

D

D

C

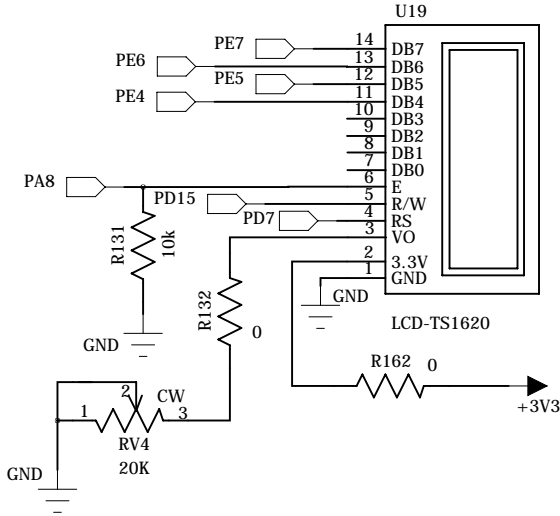
C

B

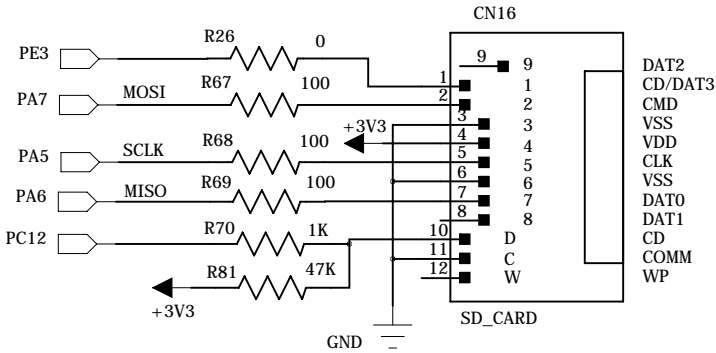
B

A

A



LCD_TS1620



SD_CARD

6

5

4

3

2

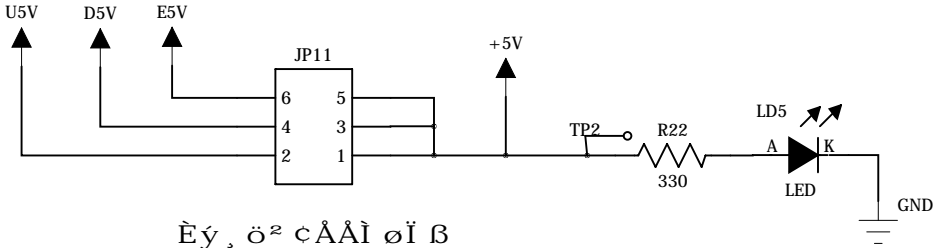
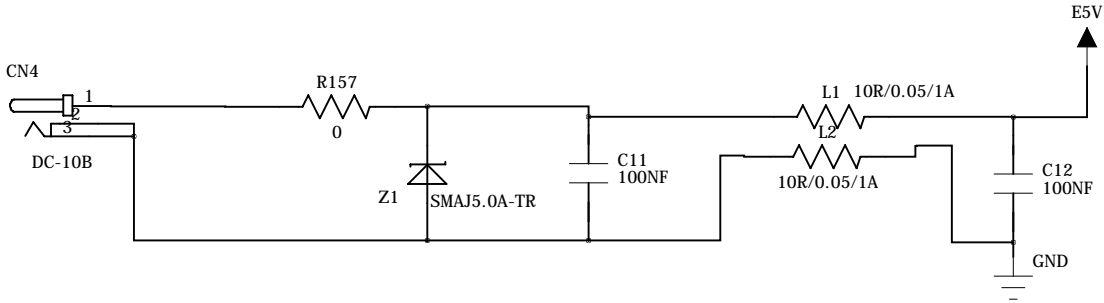
1

D

C

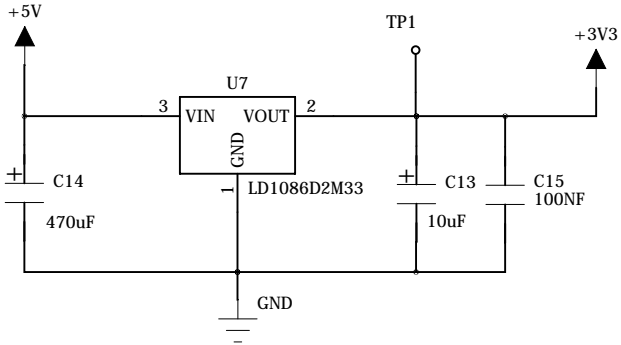
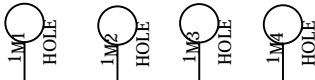
B

A



Ëý , ö² ¸ÄÄÏ øÏ ß

Jumper for choice between power connector and daughter board



power regulator

REV:

6

5

4

3

2

1

D

C

B

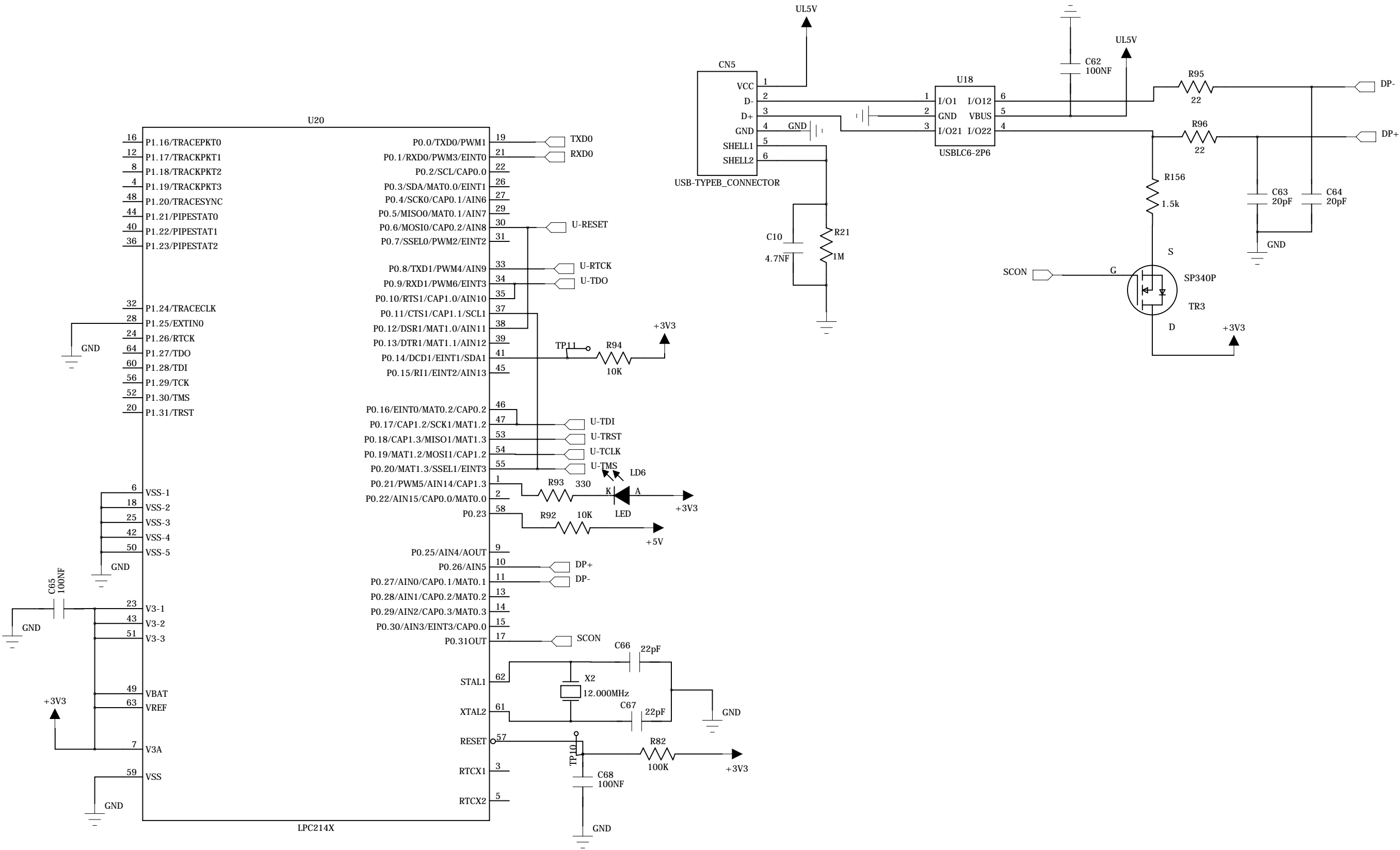
A

D

C

B

A



ULINK_ME

6

5

4

3

2

1

D

D

C

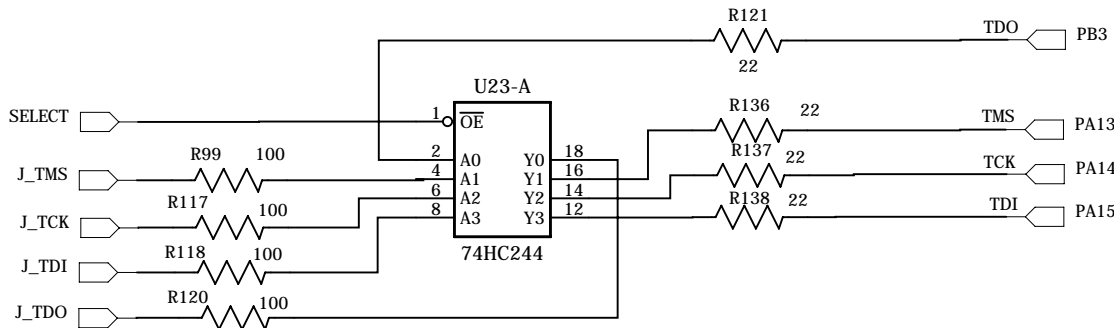
C

B

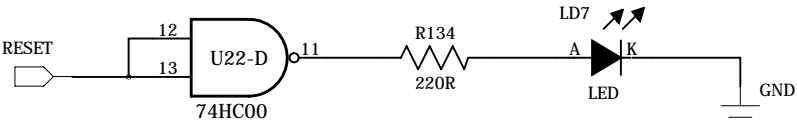
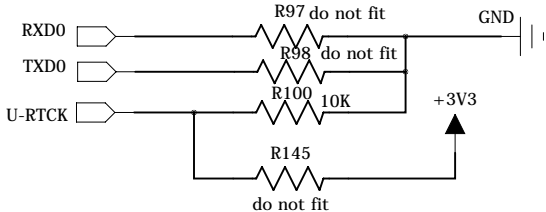
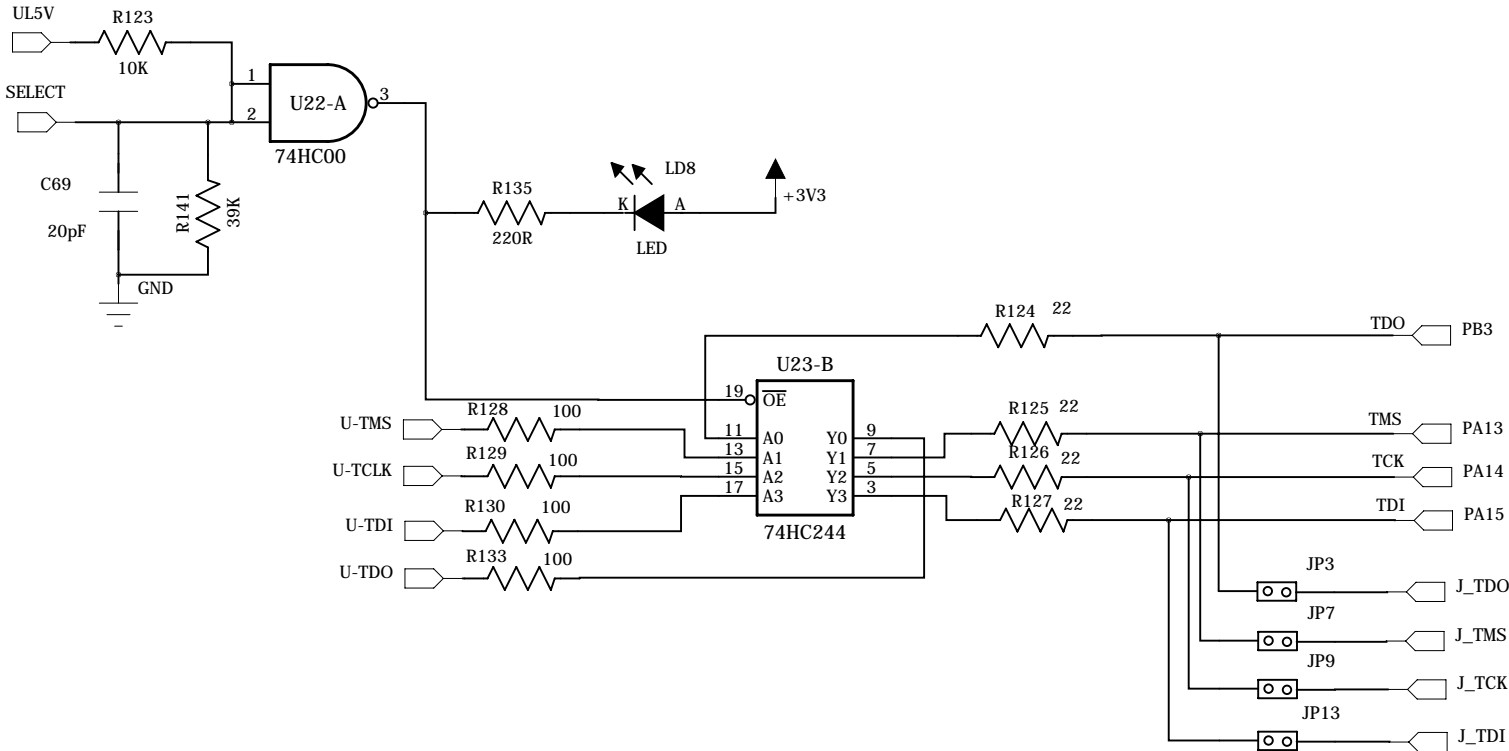
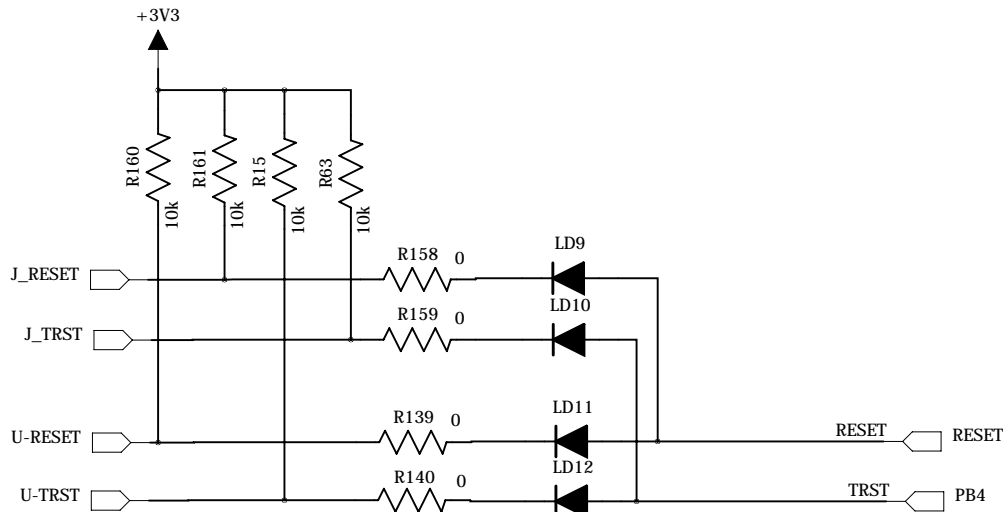
B

A

A



Select JTAG



Select ULINK_ME

6

5

4

3

2

1

D

C

B

A

D

C

B

A

