

## 1: Introduce

The WM2500S Based on the Chipcon CC2500 radio transceiver chip. The designer can use this part as a drop-in subsystem component, and never has to care about things like impedance matching or soldering fine pitch devices.

## 2. Pin Configuration

Pin	Symbol	Function
1	RFMOD_GND	Ground
2	RFMOD_VDD	RF module supply voltage
3	SI	serial configuration interface,data input
4	SCLK	serial configuration interface,clock output
5	GDO1	serial configuration interface,data output
6	GDO2	clock output
7	Rx/Tx Data(GDO0)	serial output Rx data/serial input Tx data
8	CSn	serial configuration interface,chip select

## 3. Operating Rang

Parameters	Min	Max	Unit
Supply Voltage	2.2	3.6	V
Temperature ambient	-10	60	

## 4. Electrical Specification

Tc=25 ,RFMOD\_VDD=3V if nothing else stated



<b>NO</b>	<b>Parameters</b>	<b>Min</b>	<b>Typ</b>	<b>Max</b>	<b>Unit</b>	<b>Condition</b>
<b>1</b>	<b>Supply</b>					
1.1	supply voltage	2.2		3.6	V	
<b>2</b>	<b>Current consumption</b>					
2.1	power down mode		20		uA	
2.2	Idle mode		2		mA	
2.3	Rx states		20		mA	
2.4	Tx states		23		mA	
2.5	Voltage regulator current draw		10		uA	
<b>3</b>	<b>Transmitter Part</b>					
3.1	Tx data rate		250		Kbps	
3.2	Frequency range	2400		2483.5	MHz	
3.3	Output power		-7		dBm	
3.4	Spurious emissions					
	25MHz-1GHz		-36		dBm	
	47-74,87.5-118,174-230,470-862MHz		-54		dBm	
	1800-1900MHz		-47		dBm	
	At 2-RF and 3-RF		-41		dBm	
	Otherwise above 1GHz		-30		dBm	
<b>4</b>	<b>Receiver Part</b>					
4.1	Receiver sensitivity		-80		dBm	
4.2	Saturation		-13		dBm	
4.3	Adjacent channel rejection		21		dB	Desired channel 3 dB above the sensitivity limit. 750kHz channel spacing
4.4	Alternate channel rejection		30		dB	Desired channel 3 dB above the sensitivity limit. 750kHz channel spacing

## 5. PCB Diagram

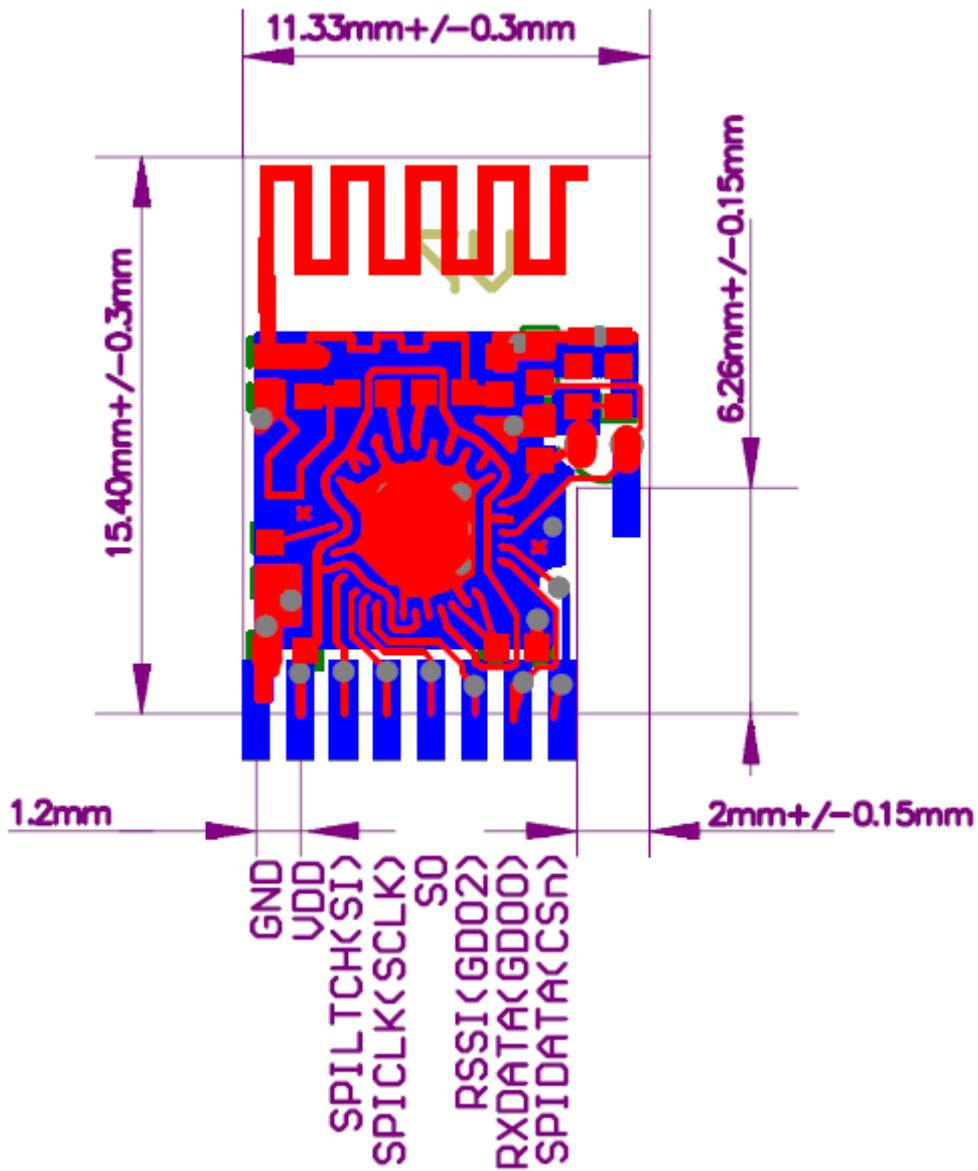
Shenzhen,China: RF WORLD (RPing Group)

15F,Nanshang Block,Zhongyin Bldg.,Caitian Rd.,Shenzhen 518026,China

Tel:86 755 82469767 82469790

Fax:86 755 82469915

Email: [sales@mcurf.com](mailto:sales@mcurf.com) [www.mcurf.com](http://www.mcurf.com)



Shenzhen,China: RF WORLD (RPing Group)

15F,Nanshang Block,Zhongyin Bldg.,Caitian Rd.,Shenzhen 518026,China

Tel:86 755 82469767 82469790

Fax:86 755 82469915

Email: [sales@mcurf.com](mailto:sales@mcurf.com) [www.mcurf.com](http://www.mcurf.com)