

## Using Op Amps as Comparators

by James Bryant

### INTRODUCTION

A comparator is a device with two input terminals, inverting and noninverting, and an output that usually swings from rail to rail. So is an op amp.

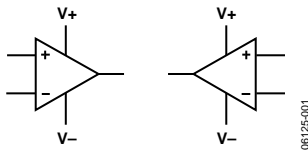


Figure 1.

A comparator has low offset, high gain, and high common-mode rejection. So does an op amp.

So what is the difference? A comparator has a logic output that indicates which of the two inputs is at a higher potential. If its output is TTL or CMOS compatible (and many comparators are), it is always intended to be at one rail or the other—or making a rapid transition between the two.

An op amp has an analog output that is not typically close to the supply rails, but is somewhere between them. It is designed to be used in closed-loop applications with feedback from its output to its inverting input. But the outputs of most modern op amps can swing close to their supply rails. Why not use them as comparators?

Op amps have high gain, low offset, and high common-mode rejection. They usually have lower bias current and are cheaper than comparators. In addition, op amps are often available in packages of two or four—if you need three op amps and a comparator, it seems pointless to buy four op amps, not use one of them, and then buy a separate comparator.

However, the best advice on using an op amp as comparator is very simple—don't!

Comparators are designed to work as open-loop systems, to drive logic circuits, and to work at high speed, even when overdriven. Op amps are designed for none of these. They are intended to work as closed-loop systems, to drive simple resistive or reactive loads, and should never be overdriven to saturation.

But it is tempting to use op amps as comparators for a number of reasons. The remainder of this document summarizes the reasons and warns of possible unexpected consequences of using an op amp as a comparator.

### WHY USE AN OP AMP AS A COMPARATOR?

- Convenience
- Economy
- Low  $I_B$
- Low  $V_{OS}$

There are several reasons to use op amps as comparators. Some are technical, one is purely economic. Op amps are manufactured as single devices, but also as duals and quads, two or four op amps on a single chip. These duals and quads are cheaper than two or four separate op amps and occupy less board space, saving yet more money. It is economical to use the spare op amp in a quad as a comparator rather than buying an additional comparator, but this is not a good design practice.

Comparators are designed for clean fast switching and, as a result, often have worse dc parameters than many op amps. So it may be convenient to use an op amp as a comparator in applications requiring low  $V_{OS}$ , low  $I_B$ , and wide CMR. It is never worthwhile to use an op amp as a comparator if high speed is important.

### WHY NOT USE AN OP AMP AS A COMPARATOR?

- Speed
- Inconvenient input structures
- Inconvenient logic structures
- Stability/hysteresis

There are several reasons not to use op amps as comparators. First and foremost is speed, but there are also output levels, stability (and hysteresis), and a number of input structure considerations. The following sections provide more detail.

Most comparators are quite fast and some are very fast indeed—but so are some op amps. Why must we expect low speed when using an op amp as a comparator? A comparator is designed to be used with large differential input voltages, whereas op amps typically operate closed loop with their input voltages minimized by negative feedback. When an op amp is overdriven, sometimes by only a few millivolts, some of its stages may saturate. If this occurs, the device takes a comparatively long time to come out of saturation, and is, therefore, much slower than if it were unsaturated.

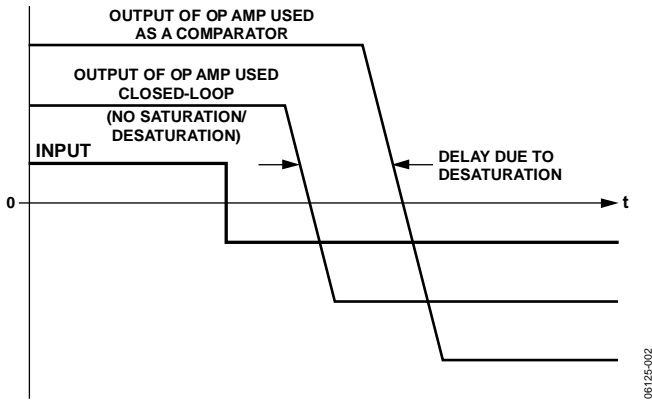


Figure 2.

The desaturation time of an overdriven op amp is likely to be considerably longer than its normal group delay (effectively the time a signal takes from input to output) and often depends on the amount of overdrive.

Because few op amps are characterized for their recovery times from differing levels of overdrive, it is necessary for the user to determine, by experiment, the delays likely to result from the levels of overdrive expected in a particular application. The value used in design calculations should be at least twice the worst value seen in any tests, because the samples tested may not be representative.

The output of a purpose-built comparator is designed to drive a particular logic family or families. Often there is a separate supply for the output stage to ensure that the logic levels are correct.

A modern op amp usually has rail-to-rail output—its maximum positive level is close to the positive supply, and the minimum negative level is close to the negative supply. (Older designs used structures with headroom of more than 1.5 V to both supplies.)

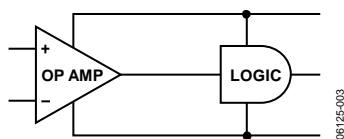


Figure 3.

If logic and op amp share the same supply, a rail-to-rail op amp can drive CMOS and TTL logic families successfully, but if the op amp and logic have different supplies, additional interface circuitry is necessary between them. Note that this applies to an op amp with  $\pm 5$  V supplies that must drive logic with +5 V supply; the logic is liable to be damaged if  $-5$  V is applied to it.

The simplest interface circuits are inverters. They may be built with NPN transistors, but these draw base current. N-channel MOSFET transistors are more convenient.

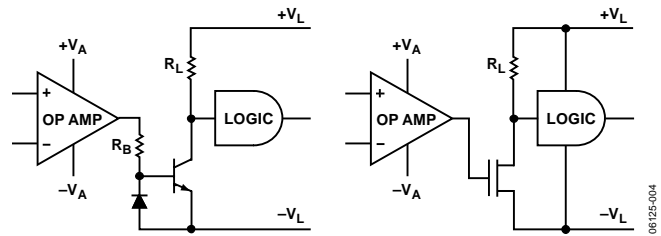


Figure 4.

$R_B$  sets the transistor base current, and  $R_L$  sets the collector/drain current. The lower their value, the faster the inverter, but the more power it consumes. Values of a few kilohms are usually used. The N-channel MOS device should have a low gate threshold voltage ( $< 2$  V) and a gate-source breakdown voltage greater than the maximum output voltages of the op amp. Usually,  $\pm 25$  V is sufficient. Even though the op amp and the logic use different supplies, they must be related to each other. The op amp positive supply,  $+V_A$ , must be more positive than the logic negative supply,  $-V_L$ , by at least 3 V to provide enough voltage to turn on the transistor or the MOSFET gate. In addition, the op amp negative supply must not be positive relative to the logic negative supply, although it may be connected to it. One must, of course, observe the absolute maximum ratings of all the devices used.

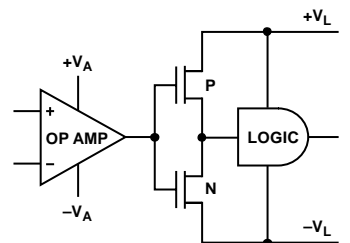


Figure 5.

A complementary MOS inverter can be built with a P-channel and an N-channel MOSFET. This has the advantage of drawing no standby current, but it does have a large current spike during switching when both devices are briefly turned on together.

With this arrangement, the op amp positive supply,  $+V_A$ , must be equal to or greater than the logic positive supply,  $+V_L$ . In addition, the op amp negative supply must be equal to or less than the logic negative supply.

Another way of ensuring the correct logic interface levels is to use a clamp amplifier such as the AD8036. A clamp amplifier has positive and negative reference terminals, and its output is clamped to within 30 mV of the reference voltages if it attempts to go above or below the positive and negative limits.

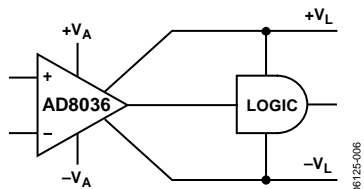


Figure 6.

So if the positive and negative logic supplies are connected to the reference inputs (and the amplifier supplies are outside the logic supplies), the amplifier output safely drives the logic.

As previously noted, when op amps are used as comparators, they tend to respond more slowly than expected, due to saturation. For this reason, it is unlikely that there are many applications where op amps, used as comparators, are required to drive emitter-coupled logic (ECL), which is, after all, used where the highest logic speeds are required.

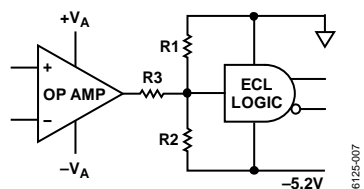


Figure 7.

But for the sake of completeness, Figure 7 shows an interface that uses just three resistors, R1, R2, and R3. They are chosen so that when the op amp output is at its positive limit, the level at the ECL gate input is  $-0.8$  V, and when it is at its negative limit, the voltage is  $-1.6$  V. The ratio of R1, R2, and R3 is set by this requirement; the absolute values are a compromise between speed and power economy.

There are a number of issues to consider with the inputs of op amps used as comparators. The first assumption is that the input impedance of an op amp is infinite. While this is a reasonable starting position with voltage-feedback op amps, it cannot be held throughout the design process. It is invalid with current-feedback (transimpedance) op amps that have very low impedance at their inverting inputs. For this reason, they should never be used as comparators.

The actual characteristics of the input impedance and the bias currents must be considered. Because most op amps have high impedance and low bias currents, there is usually little difficulty in ensuring that a design works with the actual range of expected values, rather than zero and infinity. But the calculations should be made. If they are not, Murphy's Law guarantees that if anything can go wrong, it will.

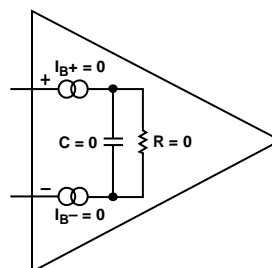


Figure 8.

Some op amps have input stages consisting of a long-tailed pair of transistors or FETs. These have high input impedance even when a large differential voltage is present between the inverting and noninverting inputs. But most op amps have more complex input structures, such as bias compensated input stages, or rail-to-rail input stages that are made of two input stages, one uses NPN or N-channel devices, and the other uses PNP or P-channel ones, connected in parallel to allow their common-mode range to include both supplies.

Op amps are designed to operate with negative feedback, which minimizes their differential input. These complex structures may not respond well to large differential input voltages. It is not practical to discuss all possible architectures in this document, but the protection circuitry shown in Figure 9 illustrates one of many such structures. With differential inputs below  $\pm 0.6$  V, the device has high input impedance—but above that, the protection diodes conduct and the differential input impedance drops abruptly.

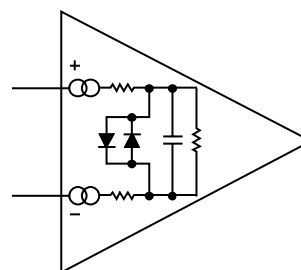


Figure 9.

In many comparator applications, the differential input is limited to a few tens or hundreds of millivolts, but in many it is not, and these effects become important.

## READ THE DATA SHEET

It is necessary to read the data sheet very carefully to determine if the worst-case voltages expected in the comparator application sufficiently affects the op amp performance to prevent proper operation. Experiment is not a good guide here, as some overvoltage effects are cumulative—a single overvoltage event does negligible damage, but many can slowly degrade offset, noise, or open-loop gain—or all three.

While reading the data sheet, it is important to look for low values of absolute maximum differential input voltage, for graphs of bias current or input current vs. differential or common-mode voltage that show discontinuities or gross nonlinearity, and for evidence of phase-inversion. For more information on reading data sheets, see [http://www.analog.com/raq\\_caveat](http://www.analog.com/raq_caveat) and the URLs linked to that page, especially [http://www.analog.com/raq\\_datasheet](http://www.analog.com/raq_datasheet).

If any of these potential dangers are present, it is essential to analyze the behavior of your system to determine if they prevent it from working properly. This may be done by a simulation, but do note that Spice and other models do not always map well to device behavior under conditions of large differential input. It may well be better to do simple pen and paper calculations of the effects to be expected, followed by some experiments.

## PHASE INVERSION

Older FET input op amps, and even some bipolar types, suffered from a phenomenon called phase inversion or phase reversal. If the input went outside the allowed common-mode range, the inverting and noninverting inputs exchanged functions.

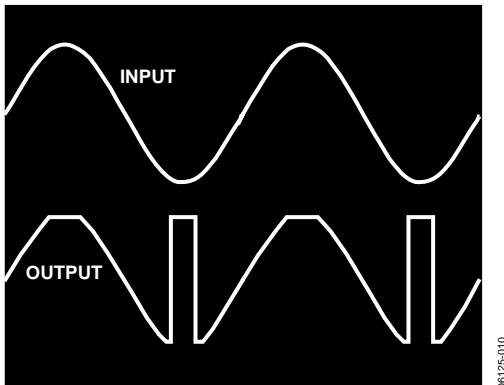


Figure 10.

As can well be imagined, this is not good news in a comparator application. It is important to ensure that any op amp used as a comparator is either free from phase inversion (most op amps in the last decade are designed this way) or that the system is designed so that the comparator inputs never approach the region where phase inversion might take place.

Because op amp manufacturers do not want to call attention to phase inversion in their products, it tends to be mentioned as a limit to the common-mode range in the data tables, without many details of what can happen if the limit is exceeded. Keep this in mind, and if an op amp appears to be suffering from the phenomenon, test it.

## INSTABILITY

An op amp used as a comparator has no negative feedback, and thus, has very high open-loop gain. During transitions, very small amounts of positive feedback can start oscillation. The feedback can arise from stray capacitance between the output and the noninverting input or from output currents flowing in common-ground impedance.

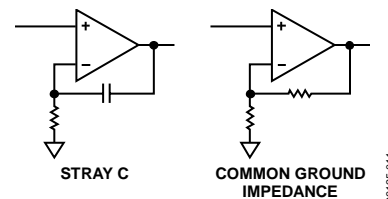


Figure 11.

The cures are to minimize stray capacitance by proper layout and to ensure that the impedance seen by the noninverting input is as low as possible to attenuate any residual capacitive feedback. Capacitive feedback to the inverting input is only a problem with current feedback op amps (which are not recommended) and voltage feedback op amps that are not fully compensated (that is, not unity-gain stable).

Ground current feedback is controlled by intelligent design of ground circuit layout. This is discussed in a number of Analog Devices, Inc. Application Notes, specifically [AN-202](#), [AN-214](#), [AN-280](#), [AN-345](#), and [AN-347](#). For additional information about layout for analog system grounds, see [http://www.analog.com/raq\\_groundingclean](http://www.analog.com/raq_groundingclean).

## HYSTERESIS

Sometimes it is not possible to prevent instability by these measures. The only remaining possibility is to use a small amount of controlled positive feedback to produce hysteresis so that once a transition has started, the input must undergo significant reversal before the reverse transition can occur.

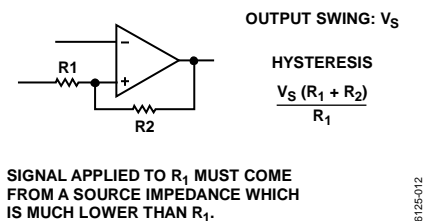


Figure 12.

This can be done with two resistors; the amount of hysteresis is proportional to their ratio. The signal input to the comparator may be applied to either the inverting or the noninverting input, but if it is applied to the noninverting input, the source impedance must be low enough to have an insignificant effect on  $R_1$ . Of course, if the source impedance is predictable enough, it may be used as  $R_1$ .

If the reference voltage is midway between the two comparator output voltages, as is the case with a symmetrical power supply and a ground reference, the introduction of hysteresis moves the positive and negative thresholds equal distances from the reference. But if the reference is nearer to one output than to the other, the thresholds are asymmetrically placed about the reference voltage.

### Calculation of thresholds when the reference is not midway between the supplies:

Comparator output voltages are  $V_P$  and  $V_N$ .

Reference voltage is  $V_R$ .

Positive threshold is

$$\frac{R_2 V_R + R_1 V_P}{R_1 + R_2}$$

Negative threshold is

$$\frac{R_2 V_R + R_1 V_N}{R_1 + R_2}$$

## CONCLUSION

In conclusion, although op amps are not designed to be used as comparators, there are, nevertheless, many applications where the use of an op amp as a comparator is a proper engineering decision. It is important to make an educated decision to ensure that the op amp chosen performs as expected.

To do this, it is necessary to read the data sheet carefully and to consider the effects of nonideal op amp parameters on the application. Because the op amp is being used in a nonstandard manner, spice models may not reflect its actual behavior, and some experiment is advisable. Furthermore, because not all devices are typical in their behavior, some pessimism is warranted when interpreting the experimental results.

**AN-849**

**NOTES**

**NOTES**

**AN-849**

**NOTES**