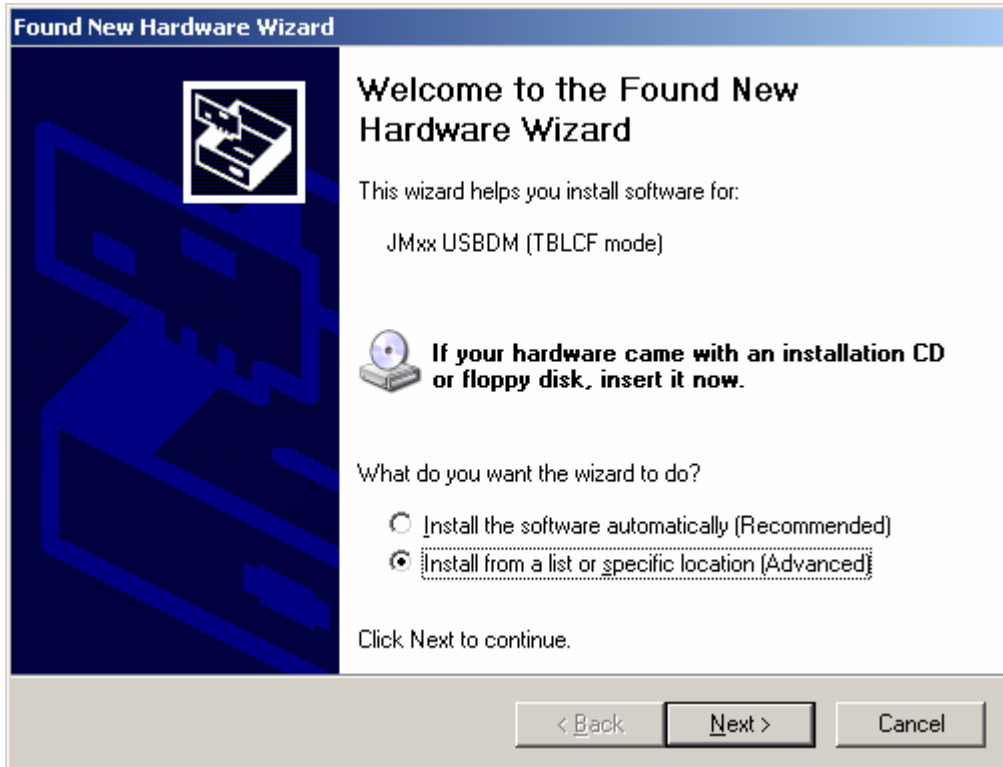


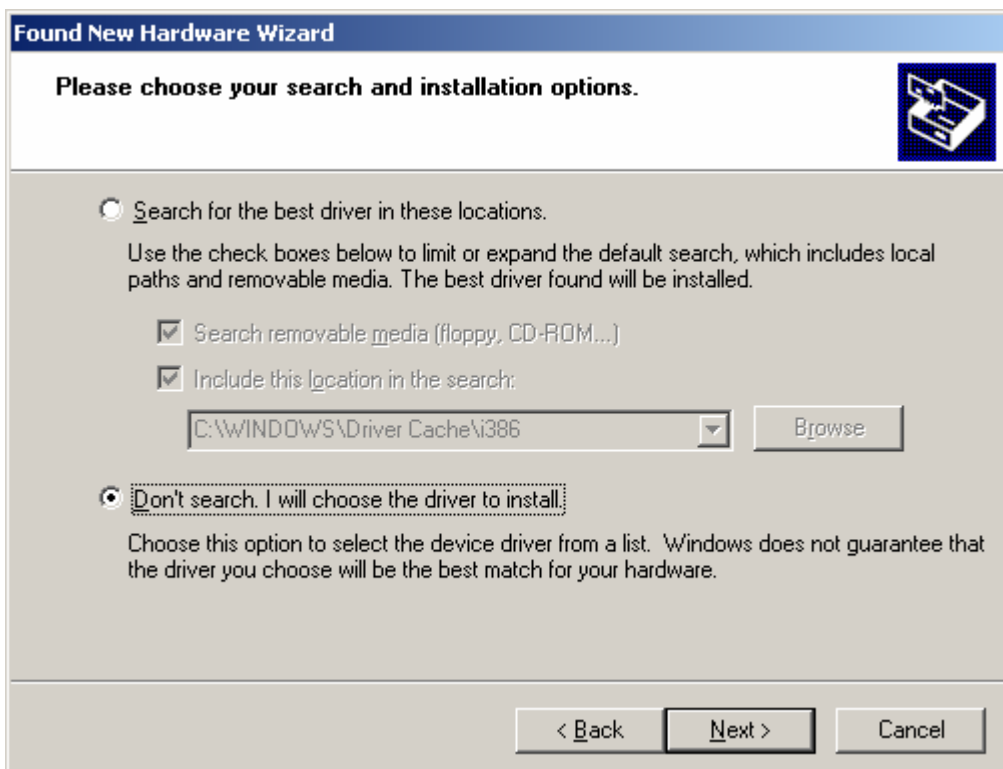
Installation of the USBDM driver.

This driver allows the Codewarrior software to communicate with the USBDM cable. You would usually only need to install this driver once. If you subsequently plug the USBDM cable into another USB port the driver will be installed for that port automatically.

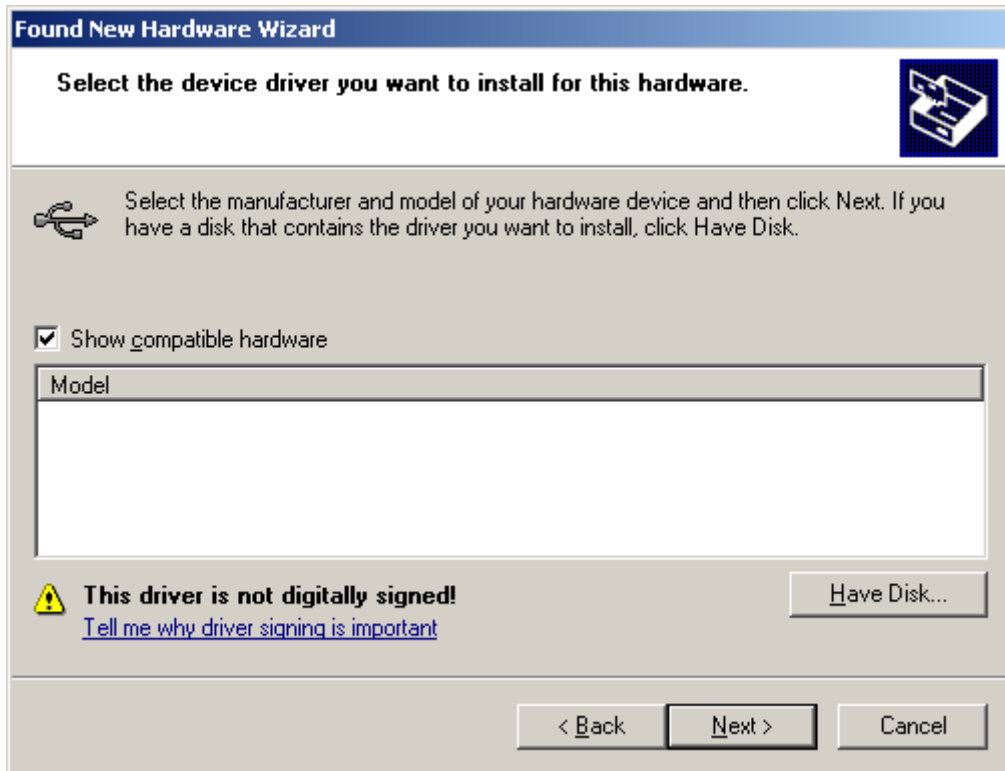
1. Insert the USBDM Cable. A dialogue similar to the following should appear. Select the second option as we wish to specify which driver to install. Click **Next**.



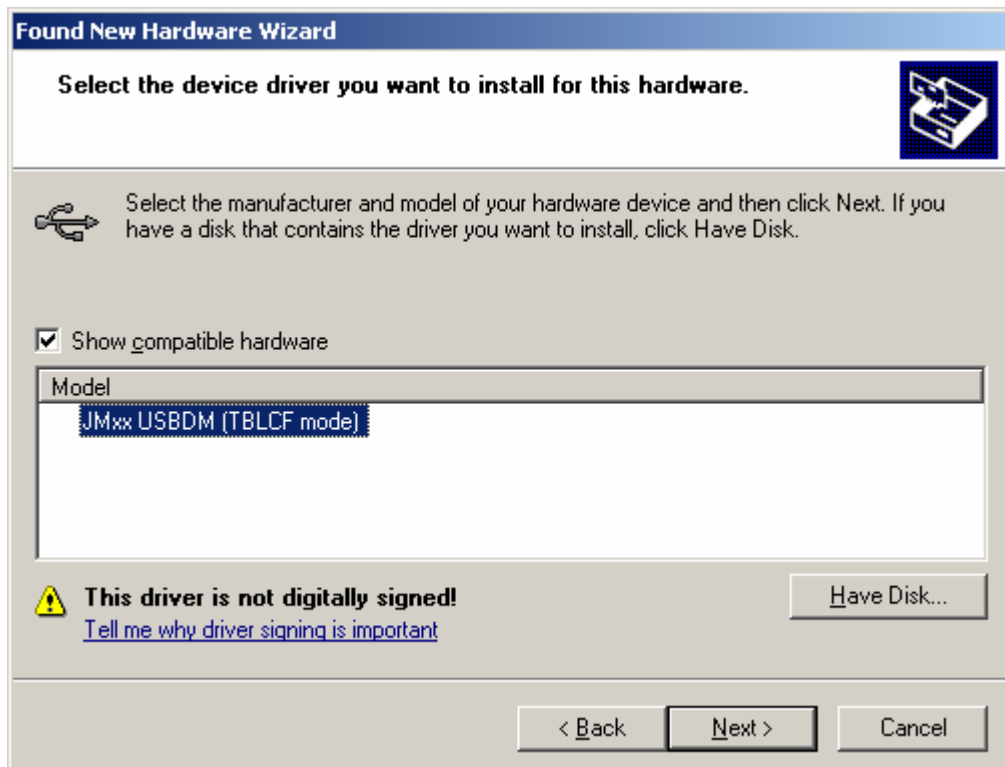
2. Check the second button as we wish to specify the driver to install. Click **Next**.



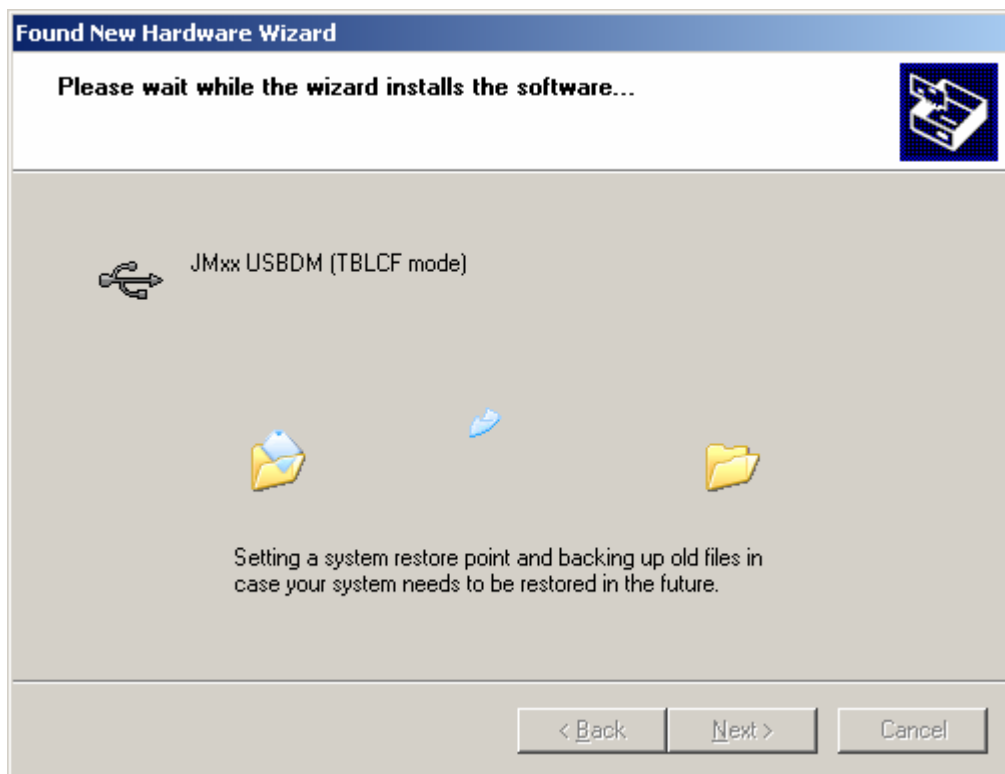
3. Select the **Have Disk...** button which will open a file browser. Browse to the Driver directory containing the INF File (**1.Installation\USB_Driver\usbdm.inf**) for the USBDM driver.



4. Upon closing the browser the entry **JMxx USBDM (TBLCF mode)** should appear as an option in the wizard dialogue. Make sure this is selected and then click **Next** to move on.



5. MS Windows may create a system restore point before proceeding as shown here. Let this complete. Otherwise proceed to the next step.



6. The wizard may prompt you for additional files. If so, browse to the directory containing the driver to locate the correct file.
7. The **Found New Hardware** wizard should now complete. Just click **Finish** to close the dialogue.

