

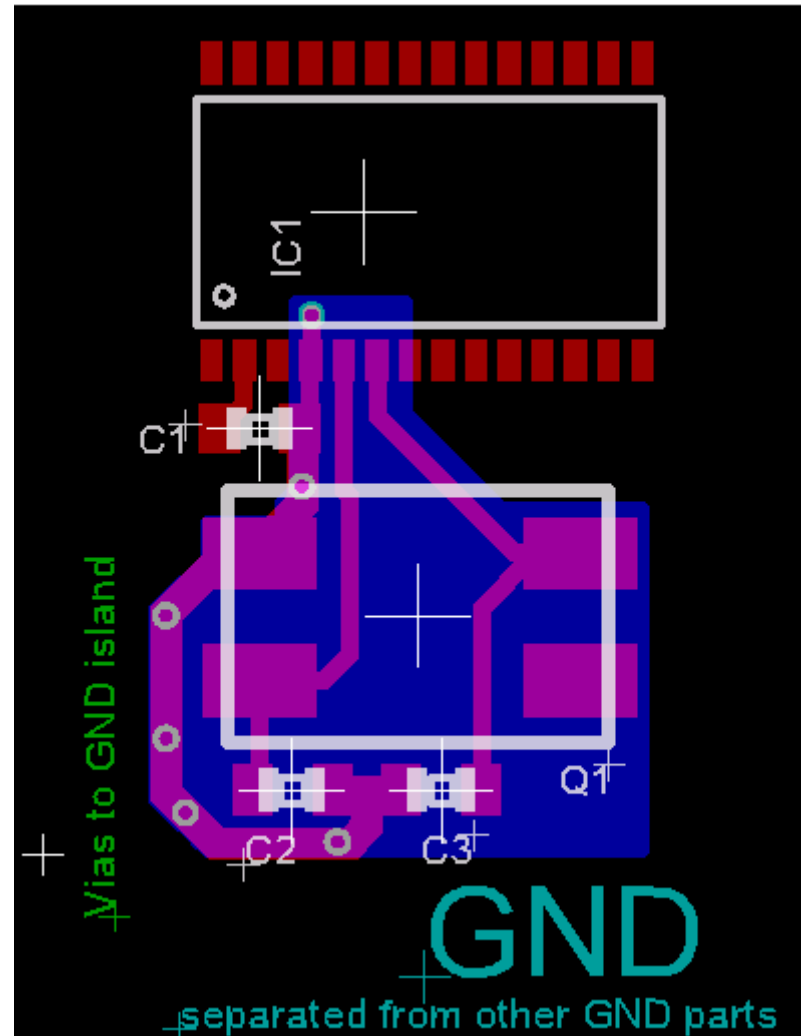
Crystal Oscillators - Layout Recommendations (specific examples)

Example for a MSP430F123 oscillator layout:

- ❑ Crystal as close as possible at XIN/XOUT terminals.
- ❑ Separate GND below the crystal and load capacitors connected to the Vss terminal.
- ❑ Load capacitors grounded to the separate GND.

Support:

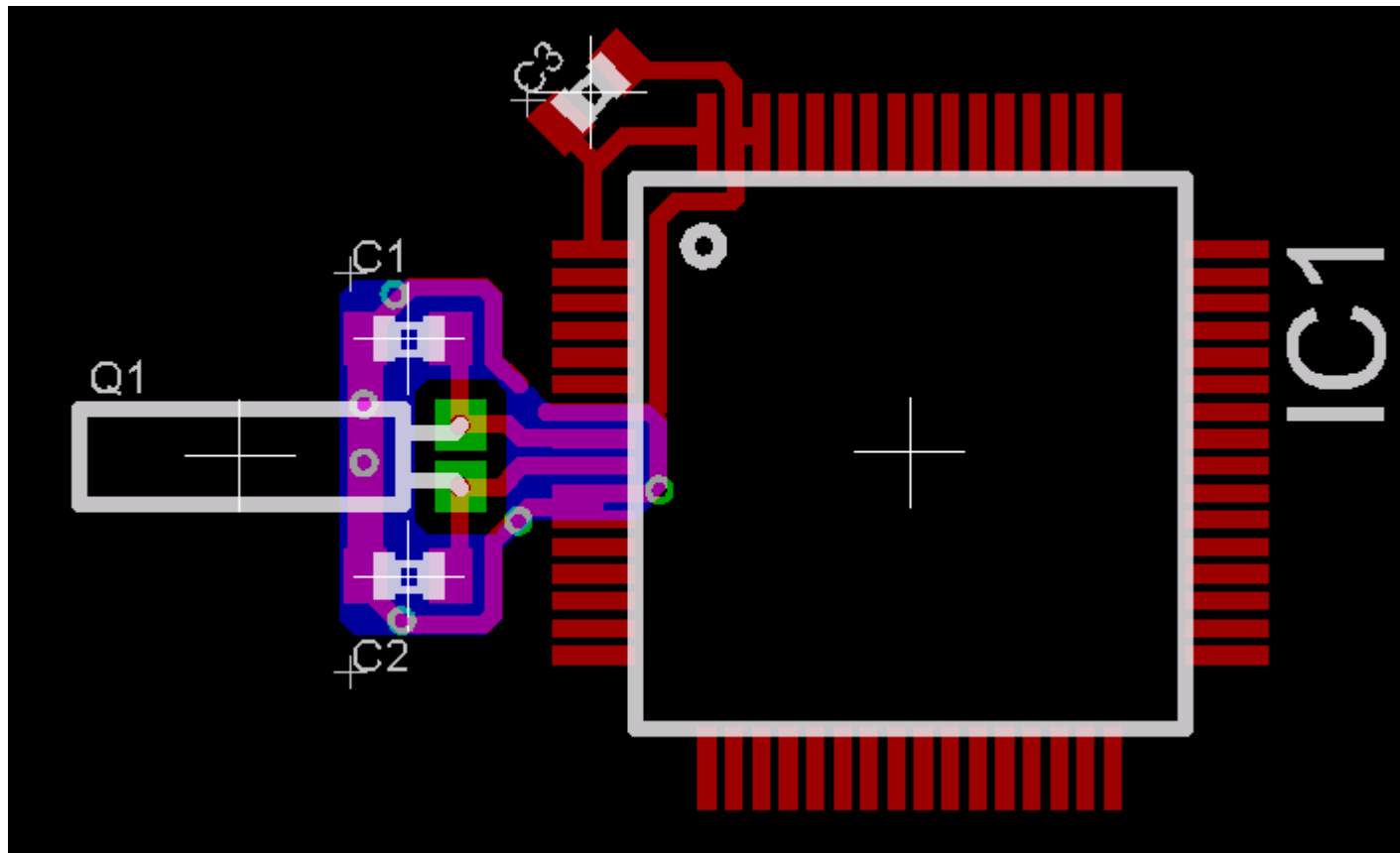
- ❑ Application report covering all oscillator related topics is in work.
- ❑ The App.Rep. will also give **tested** layout examples for every specific MSP430 package.



Crystal Oscillators - Layout Recommendations (specific examples)

Example for a MSP430F413 oscillator layout:

- ❑ Utilizing the nc spare pins beside the XIN/XOUT.



Crystal Oscillators - Layout Recommendations (specific examples)

Example for a
MSP430F13x/14x XT2
oscillator layout:

- ❑ Distance between crystal and oscillator pins as short as possible
- ❑ Separate GND
- ❑ Load not absolutely balanced, can be compensated by C1/C2 adaptation.

