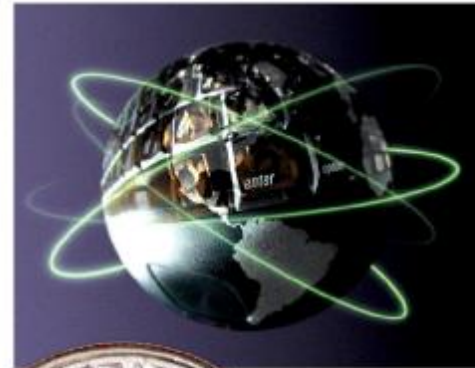




IndoorGPS®

INDUSTRY-LEADING A-GPS TECHNOLOGY FOR MOBILE WIRELESS DEVICES



SEMICONDUCTOR PRODUCTS
NETWORK INFRASTRUCTURE
PRODUCTS & DATA SERVICES



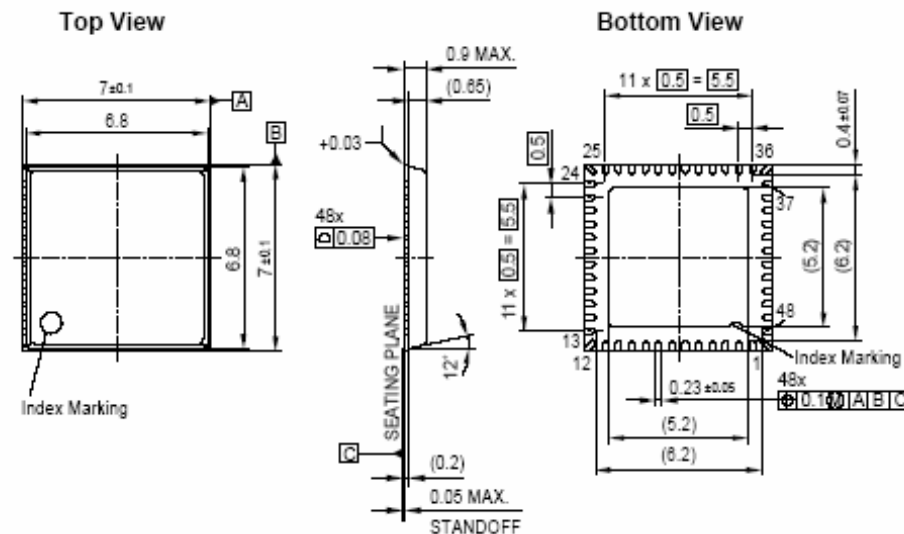
PRODUCT UPDATE 2005

GLOBAL LOCATE CONFIDENTIAL / MAY 2005

A-GPS Semiconductor Products and Solution

Hammerhead Single Chip A-GPS IC

- Highest level of integration
 - Low Cost, Breakthrough solution
 - 0.13 μ RFCMOS technology
 - 7 x 7 mm package (single die), 48 pin VQFN
 - Industry smallest A-GPS solution footprint of 75 mm²
- Partnership with Infineon Technologies
 - Leader in CMOS-RF design and manufacturing
 - One of world's top supplier of semiconductors to cellular industry
- Software compatible with existing Global Locate ICs

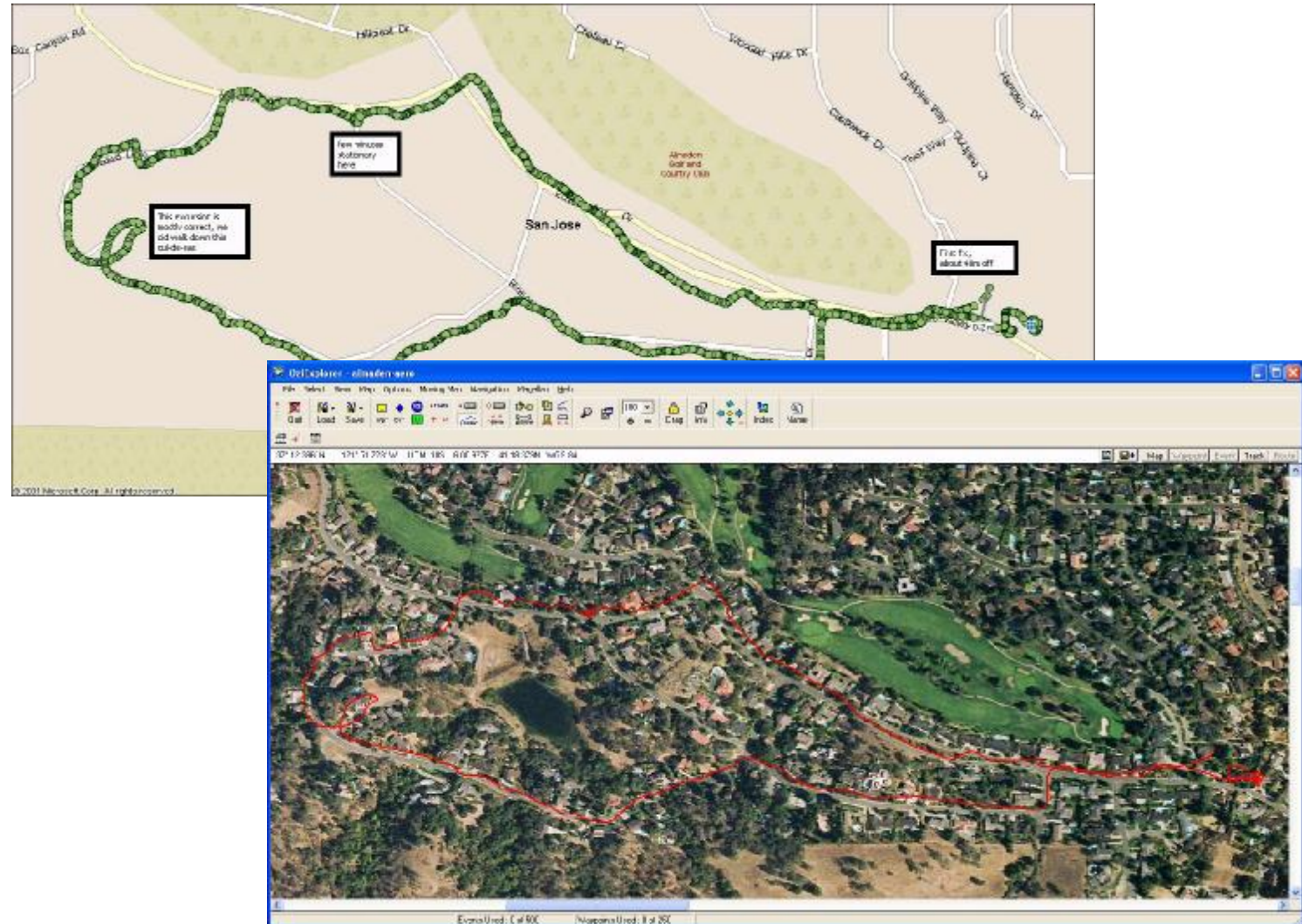


The A-GPS Control Software

- **Assistance data standards support**
 - UMTS/GSM: 3GPP TS 25.331, TS 44.031, and OMA SUPL
 - CDMA: 3GPP2 C.S0022-0-1
- **Multi protocol operations**
 - User Plane: SUPL
 - Control Plane: RRLP, RRC (for 3G)
- **Single library to support all GPS modes**
 - MS-Assist & MS-Based
 - Autonomous & Enhanced Autonomous
- **Low memory resources**
 - < 180K ROM/FLASH
 - < 50K RAM
- **Non-time critical task priority**
 - Enabling tasks to run in parallel
 - Does not disrupt call flow
 - Standard performance benchmarked at 3 MIPS

Performance Examples and Competitive Advantages

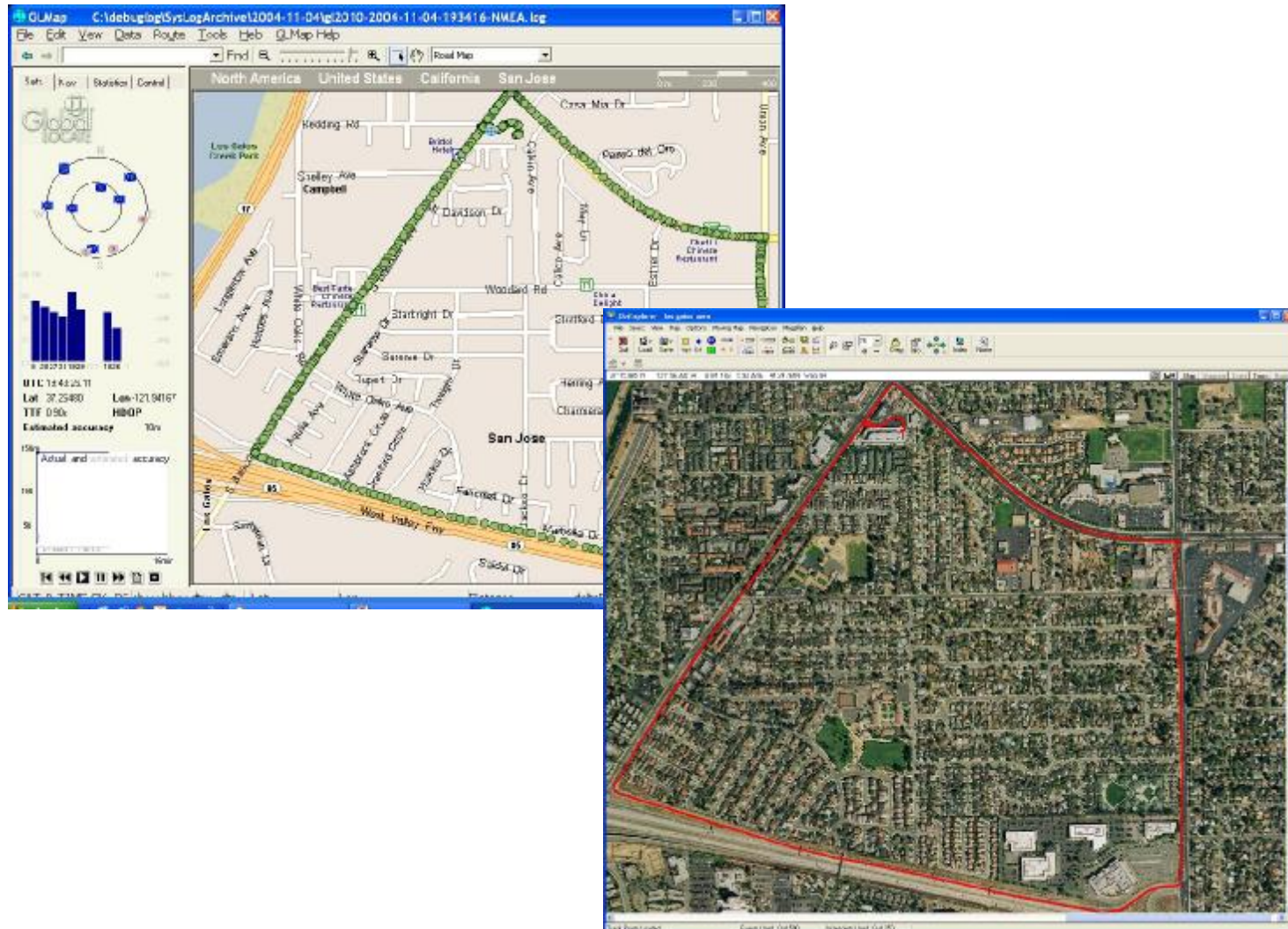
GL Location Enabled Wireless device out in the world.... Walking





Real World Navigation Performance

GL Location Enabled Wireless device out in the world.... Driving



Indoor Live, at trade shows

CTIA W2002
Orlando, FL
Inside exhibit hall
-150 to -160 dBm



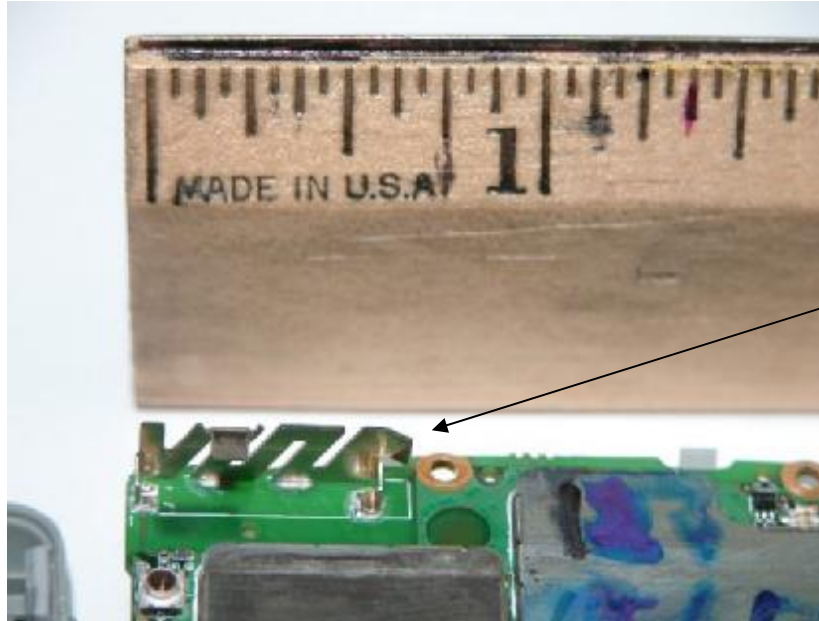
GPS-Wireless 2004
San Francisco, CA
Inside exhibit hall
-148 to -160 dBm



IEEE PLANS 2002
Palm Springs, CA
Doral Resort Hotel
-140 to -157 dBm



Competitive Advantage



Small, low cost GPS antenna form factor in GL enabled Mobile handset device

- High sensitivity, Fast Fix
- Enables smaller form factor designs, GPS antenna performance tradeoff's and minimizes board space
- Mature, A-GPS standards compliant software,
- *New* SUPL client

Enabling the Business of Location

