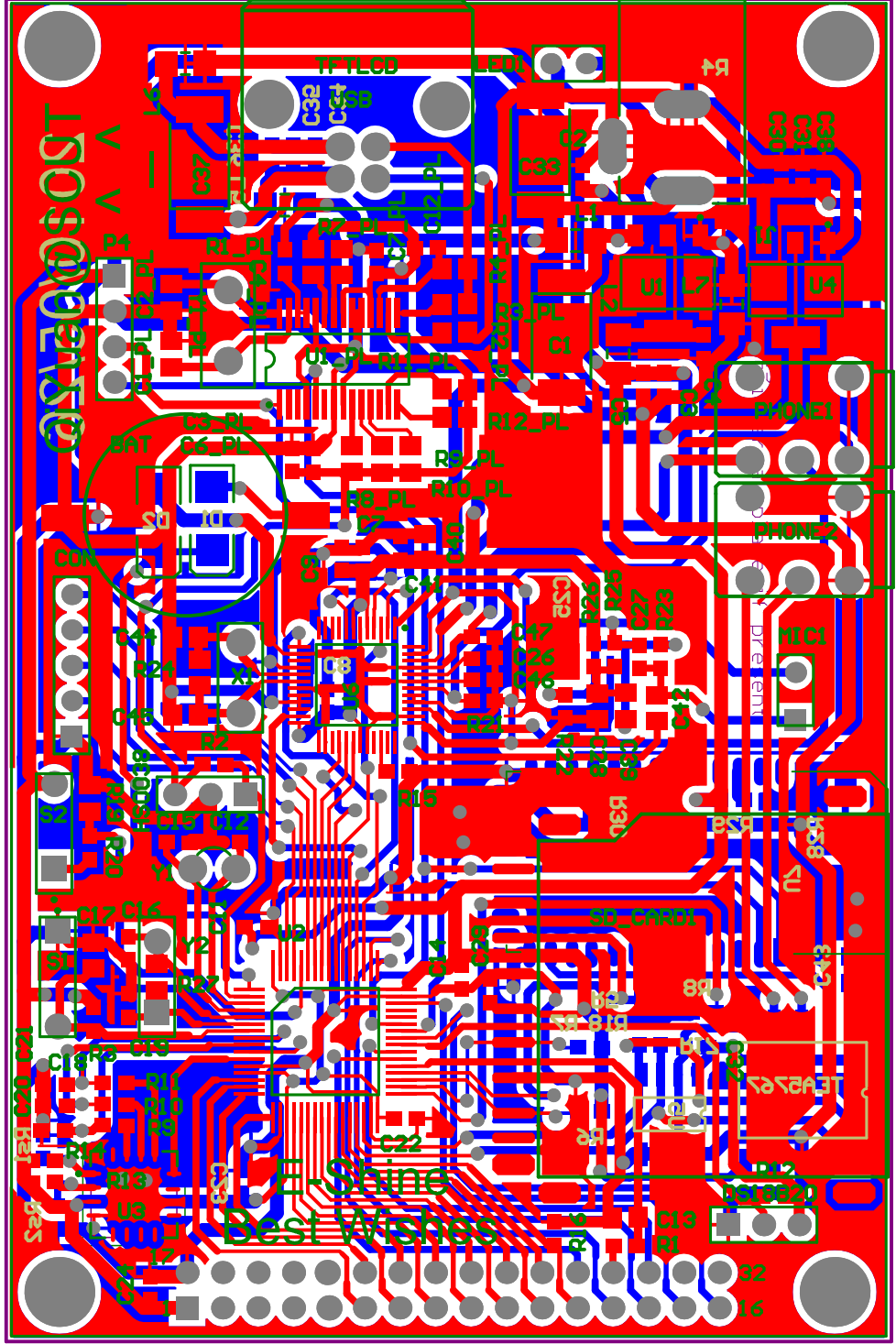


Title		
Size	A3	
Date:	2010-7-8	Sheet of
File:	K:\D\my_mp3.SchDoc	Drawn By:



Comment	Description	Designator	Footprint	LibRef	Quantity
UPS		BAT	BAT	UPS	1
470uF	Polarized Capacitor (Radial)	C1, C6, C37	CC4532-1812	Cap Pol1	3
	Capacitor, Resistor	C1_PL, C2_PL, C17, R4, R28	2012[0805]	cap, Res2	5
104	Capacitor	C2, C3, C4, C12_PL, C18, C20, C21, C24, C26, C29, C30, C31, C32, C34, C35, C36, C38, C41	1608[0603]	Cap	18
	Capacitor, Resistor	C3_PL, C4_PL, C6_PL, C7, C7_PL, C8, C9, C11, C12, C14, C15, C16, C19, C22, C23, C46, C47, R12, R29	1608[0603]	cap, Res2	19
10uF	Capacitor	C5	1608[0603]	Cap	1
1uF	Capacitor	C13, C25, C42	2012[0805]	Cap	3
101	Capacitor	C27	1608[0603]	Cap	1
10uF	Capacitor	C28, C39, C40	2012[0805]	Cap	3
2200uF	Polarized Capacitor (Radial)	C33	CC4532-1812	Cap Pol1	1
101	Capacitor	C43	2012[0805]	Cap	1
33	Capacitor	C44, C45	2012[0805]	Cap	2
Header 5	Header, 5-Pin	CON	HDR1X5	Header 5	1
D Schottky	Schottky Diode	D1, D2	DSO-C2/X2.3	D Schottky	2
DS18B20 温度传感	Header, 3-Pin	DS18B20	HDR1X3	Header 3	1
HS0038		HS0038	HDR1X3	HS0038	1
PWR2.5	Low Voltage Power Supply Connector	J1	KLD-0202	PWR2.5	1
10uH	Resistor	L1, L2, L5, L6, L7	CR3216-1206	Res2	5
工作指示灯	Typical BLUE SiC LED	LED1	rad-0.1	LED3	1
工作指示灯	Typical BLUE SiC LED	LED2	2012[0805]	LED3	1
麦克风	Header, 2-Pin	MIC1	HDR1X2	Header 2	1
Header 4	Header, 4-Pin	P4	HDR1X4	Header 4	1
Header 3	Header, 3-Pin	PHONE1, PHONE2	PHONE	Header 3	2
1K	Resistor	R1, R9, R10, R11, R13, R14, R21, R22, R23, R25, R26, Rs1, Rs2	1608[0603]	Res2	13
220K	Resistor	R1_PL, R7_PL, R8_PL, R9_PL, R10_PL	2012[0805]	Res2	5
4.7K	Resistor	R2, R17, R18	1608[0603]	Res2	3
27	Resistor	R2_PL, R3_PL	2012[0805]	Res2	2
10K	Resistor	R3, R16, R20	1608[0603]	Res2	3
15K	Resistor	R4_PL	2012[0805]	Res2	1
45K	Resistor	R5, R6, R7, R8, R30	1608[0603]	Res2	5
47K	Resistor	R11_PL, R12_PL	2012[0805]	Res2	2
100K	Resistor	R15	1608[0603]	Res2	1
105	Resistor	R19	2012[0805]	Res2	1
1M	Resistor	R24, R27	2012[0805]	Res2	2
SW-PB	Switch	S1, S2	SPST-2	SW-PB	2
		SD_CARD1	SD card	sd card	1
Header 5X2	Header, 5-Pin, Dual row	TEA5767	TEA5767	Header 5X2	1
Header 16X2A	Header, 16-Pin, Dual row	TFTLCD	HDR2X16_CEN	Header 16X2A	1
REG1117-3.3	800mA and 1A Low Dropout Positive Regulator 2.85V, 3.3V, 5V, and Adjustable	U1	ZZ311	REG1117-3.3	1
PL2303		U1_PL	PCBComponent_1	PL2303	1
Component_1		U2	LOFP64	Component_1	1
mma7260		U3	QFN100P600X600X80-16N	Component_1	1
REG1117-2.5	800mA and 1A Low Dropout Positive Regulator 2.85V, 3.3V, 5V, and Adjustable	U4	ZZ311	REG1117-3.3	1
FM24C16		U5	SOP-8	24C256	1
VS1003		U6	mTQFP48	VS1003	1
Component_1		U7	IDS-BM4A	Component_1	1
Header 6	Header, 6-Pin	USB	USB	Header 6	1
12.288M	Crystal	X1	CAPR5.08-7.8x3.2	CRYSTAL	1
32.768K	Crystal Oscillator	Y1	BCY-W2/D3.1	XTAL	1
XTAL	Crystal Oscillator	Y1_PL	RAD-0.2	XTAL	1
8MHz	Crystal Oscillator	Y2	SPST-2	XTAL	1