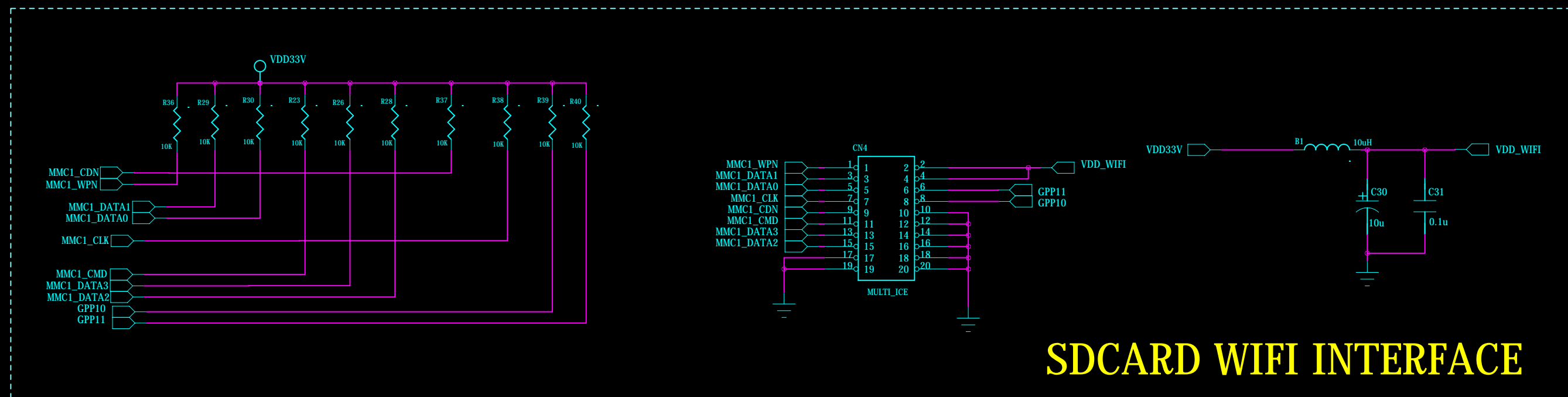
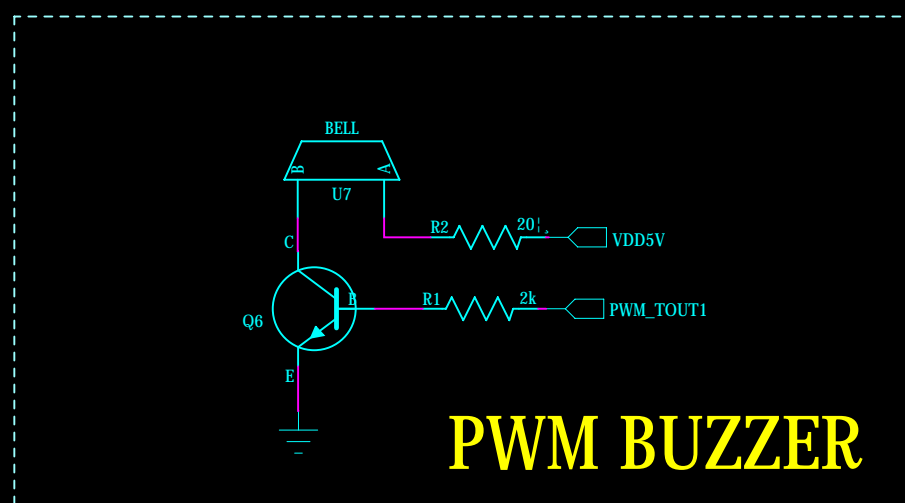


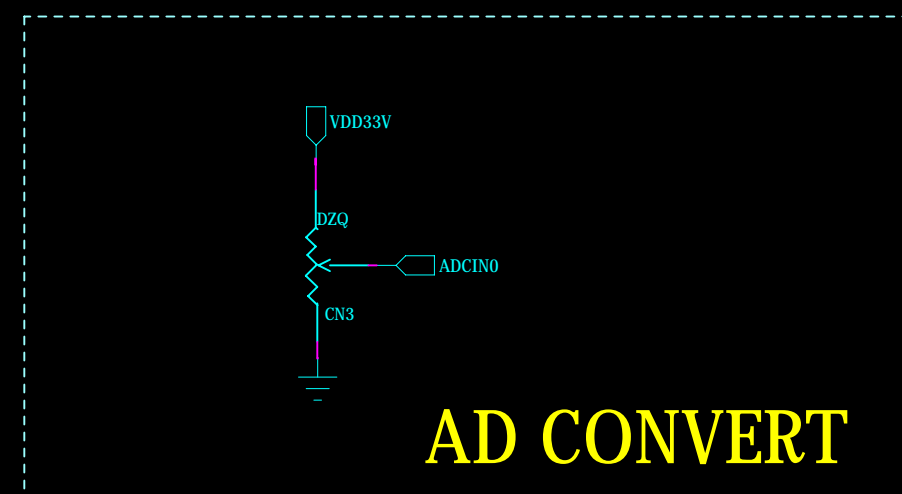
SDCARD0



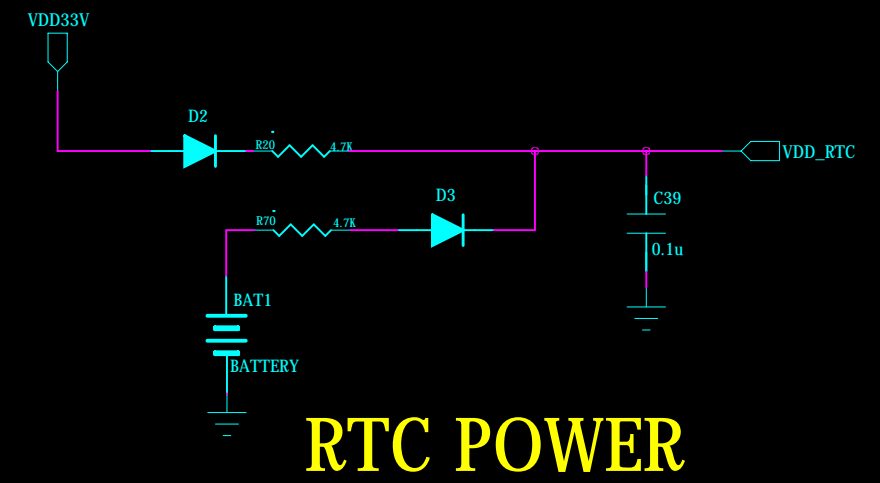
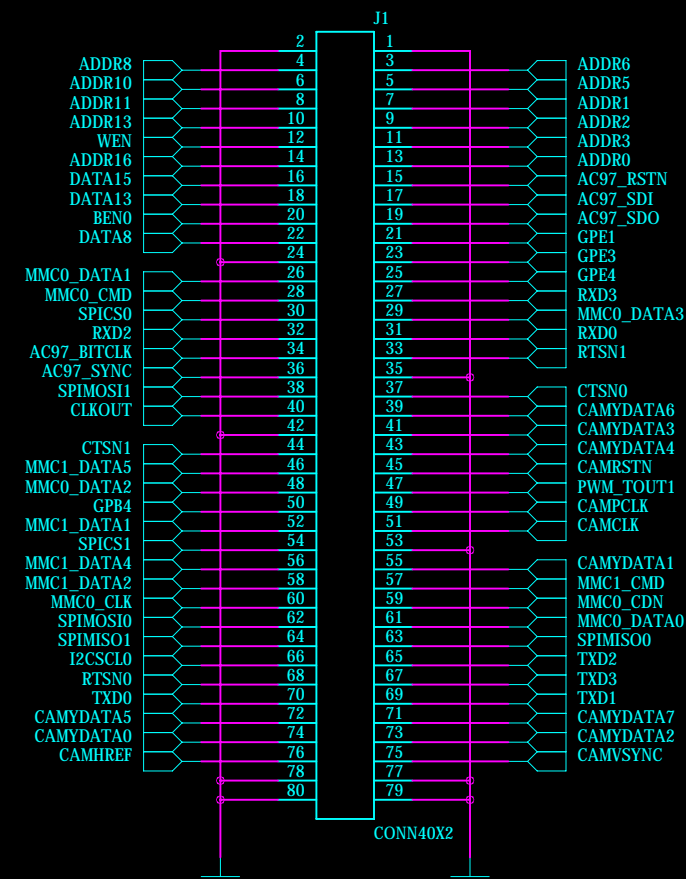
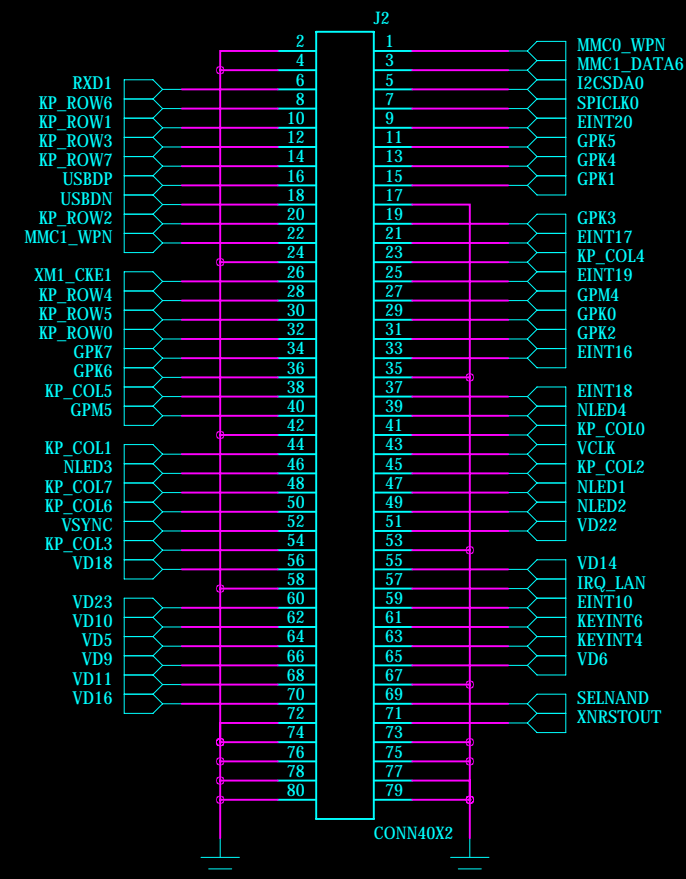
SDCARD WIFI INTERFACE



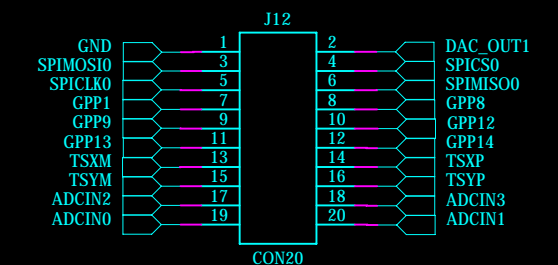
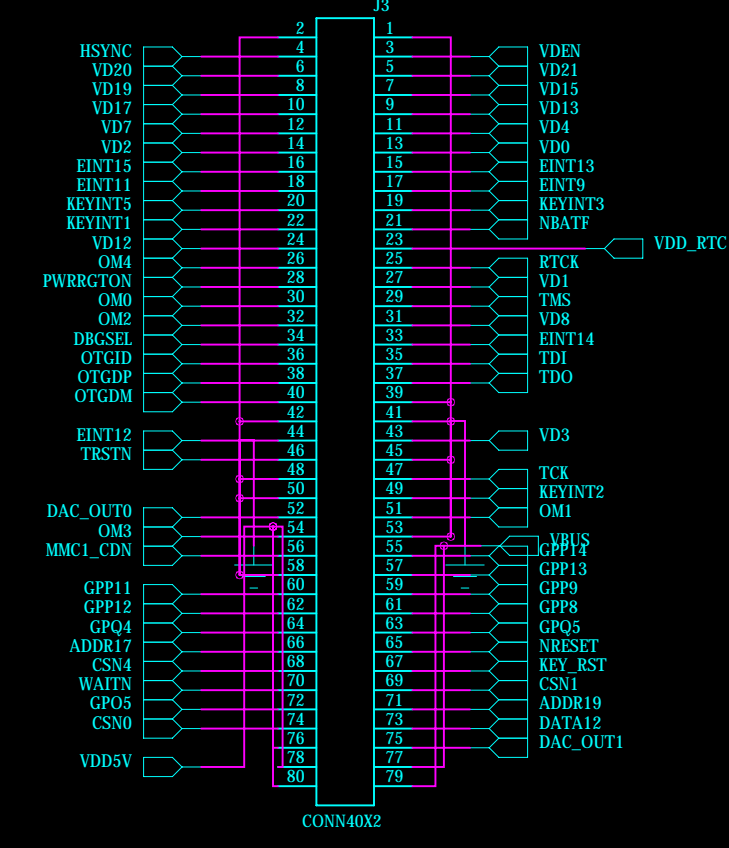
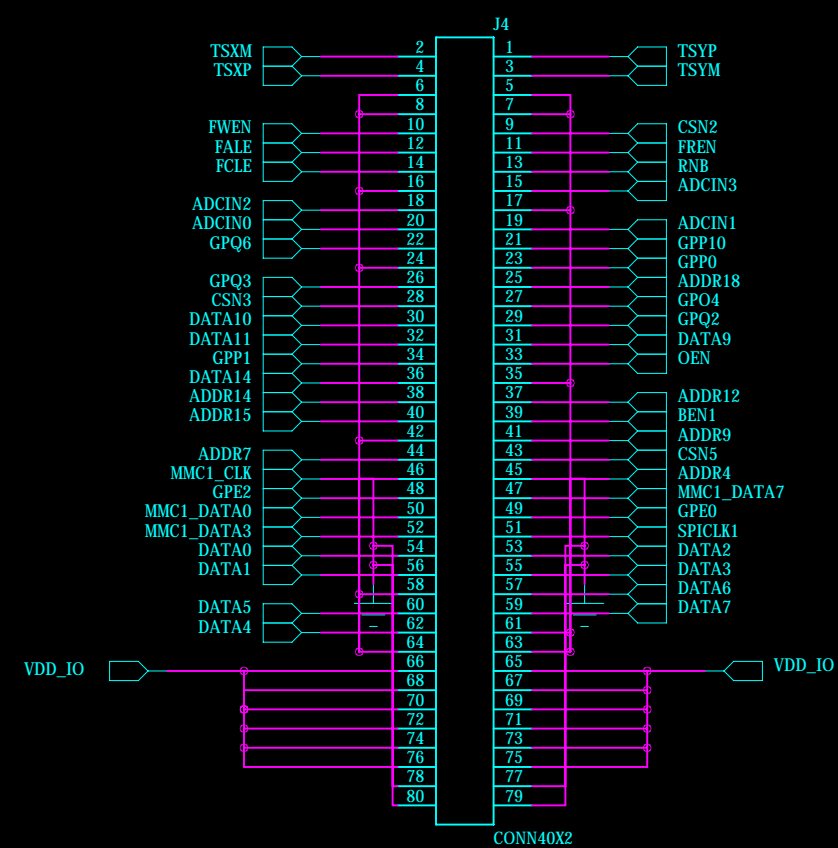
PWM BUZZER



AD CONVERT

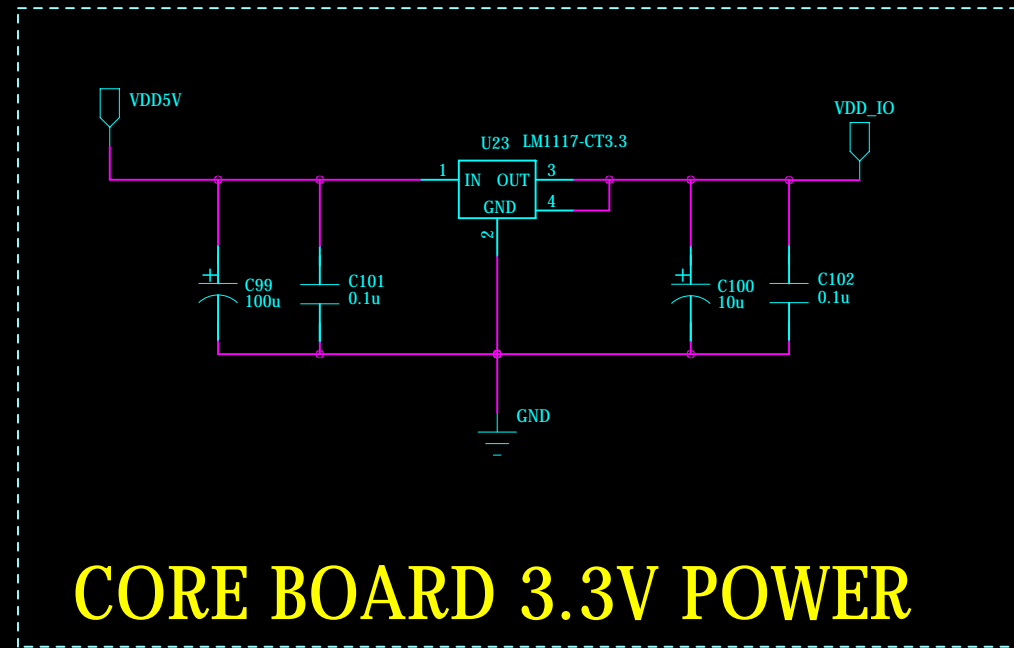


CONNECTORS

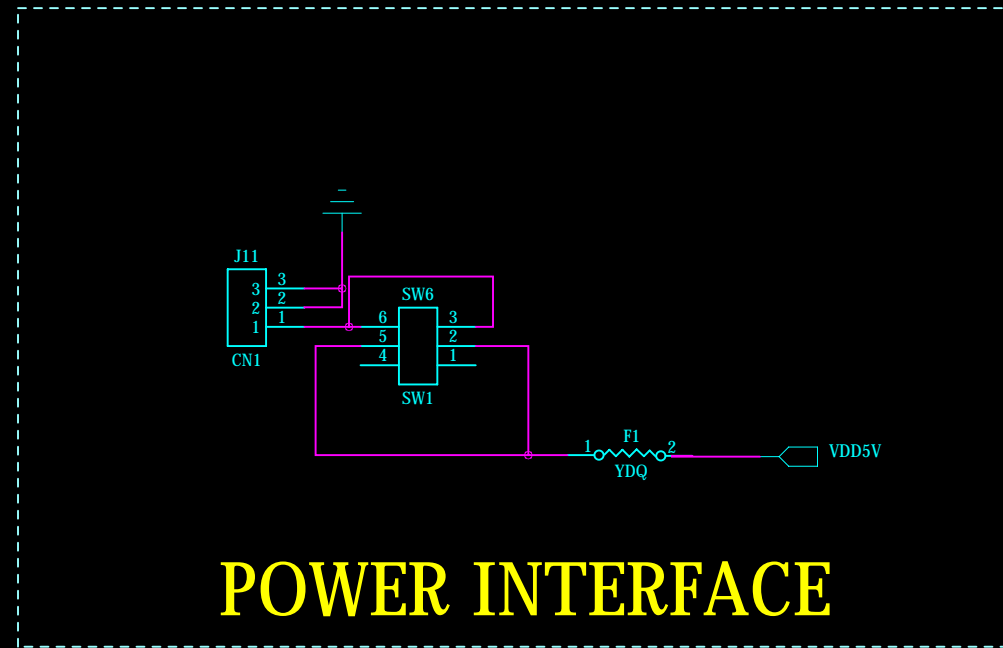


USER IO

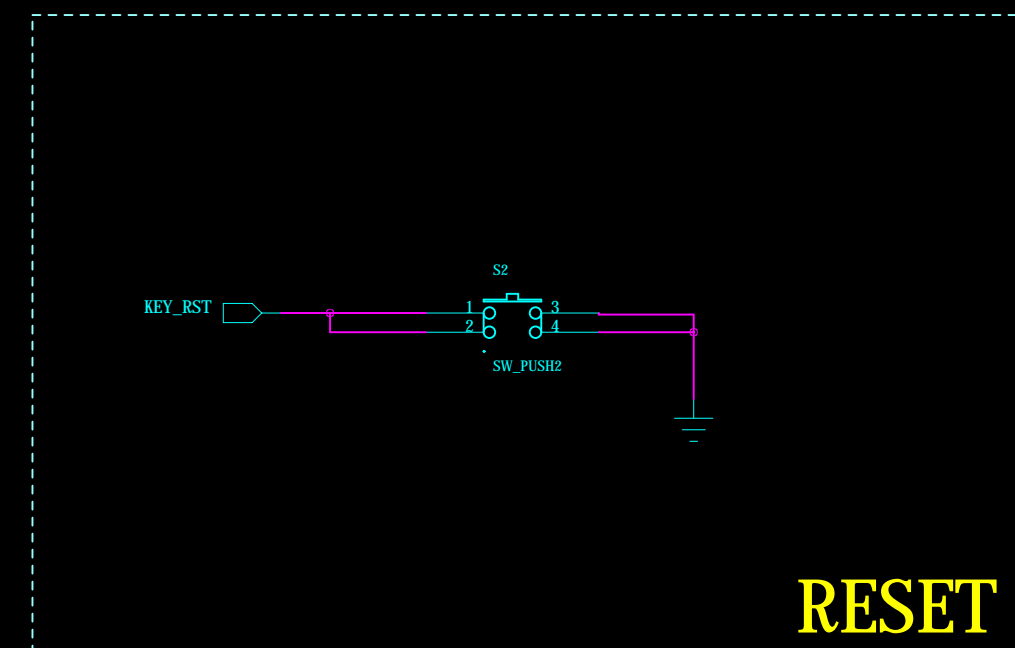
COMPANY:	TE6410 Expansion Board
TITLE:	Forlinx Embedded
HOME:	www.witech.com.cn



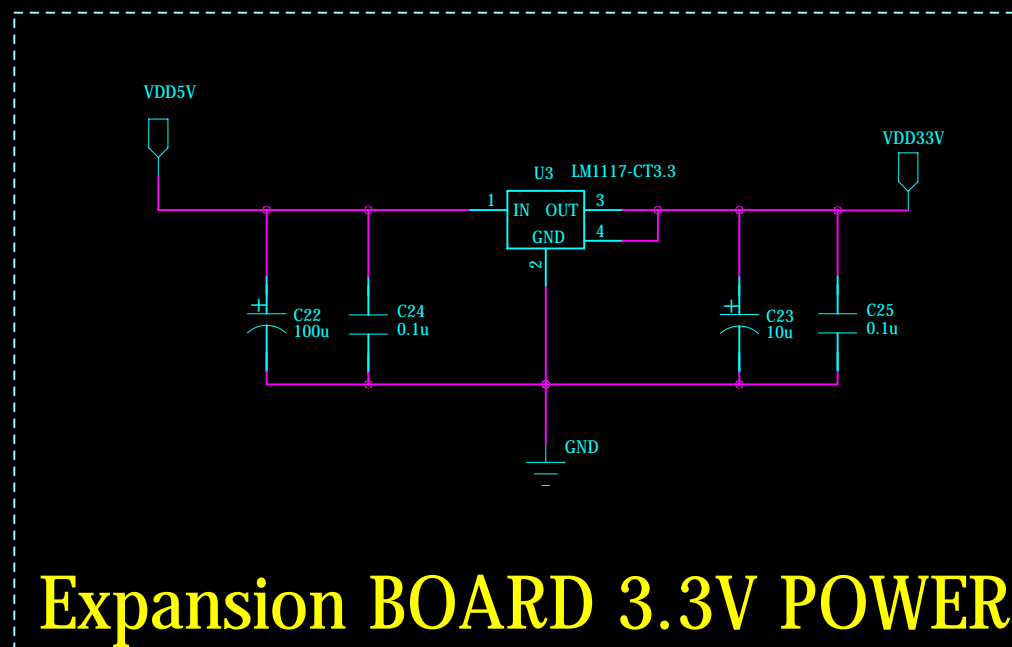
CORE BOARD 3.3V POWER



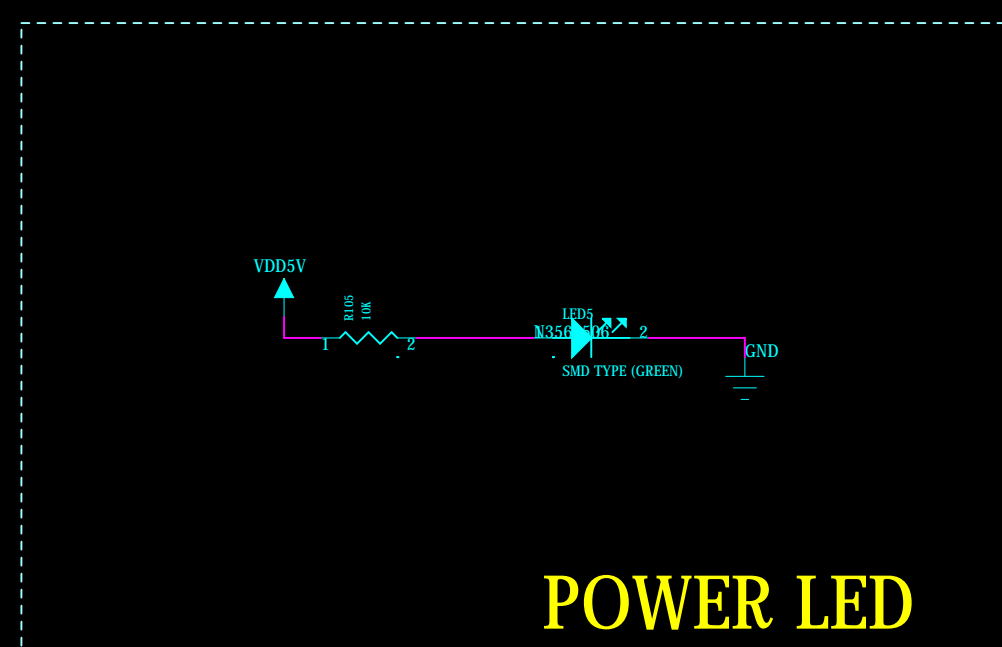
POWER INTERFACE



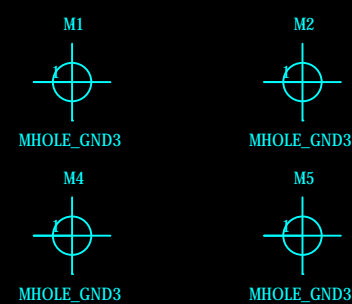
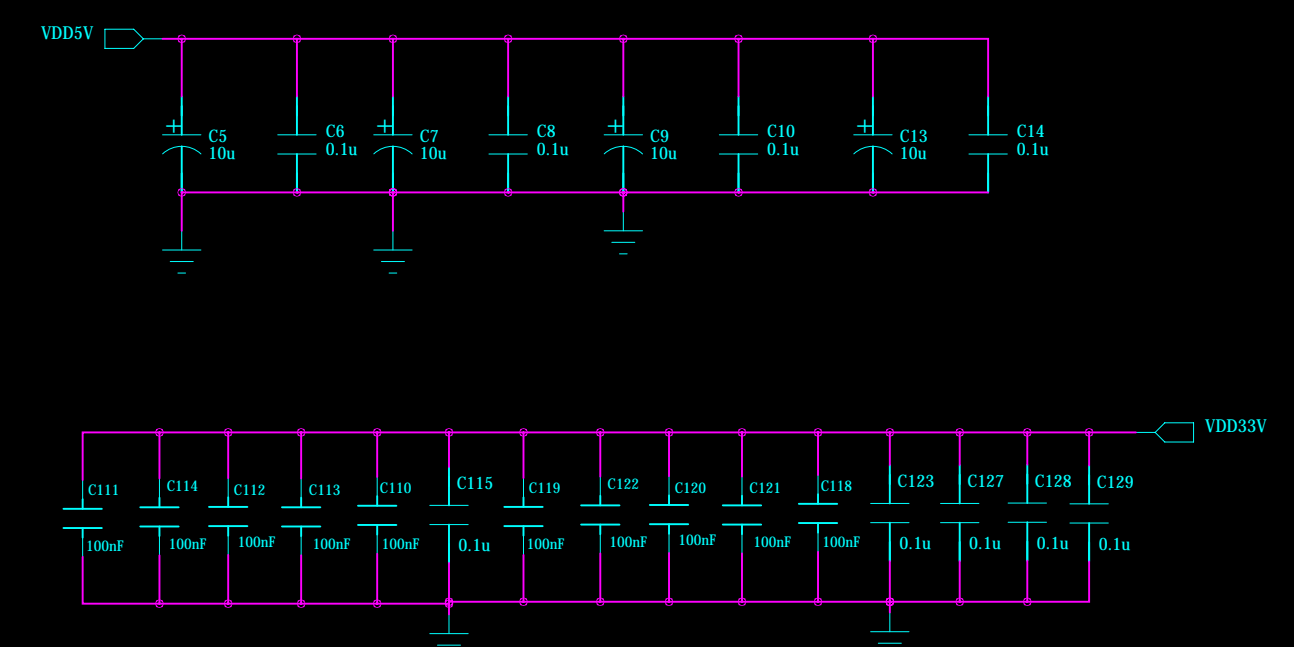
RESET



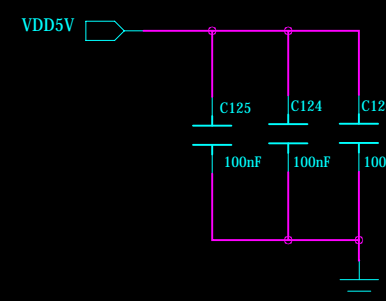
Expansion BOARD 3.3V POWER



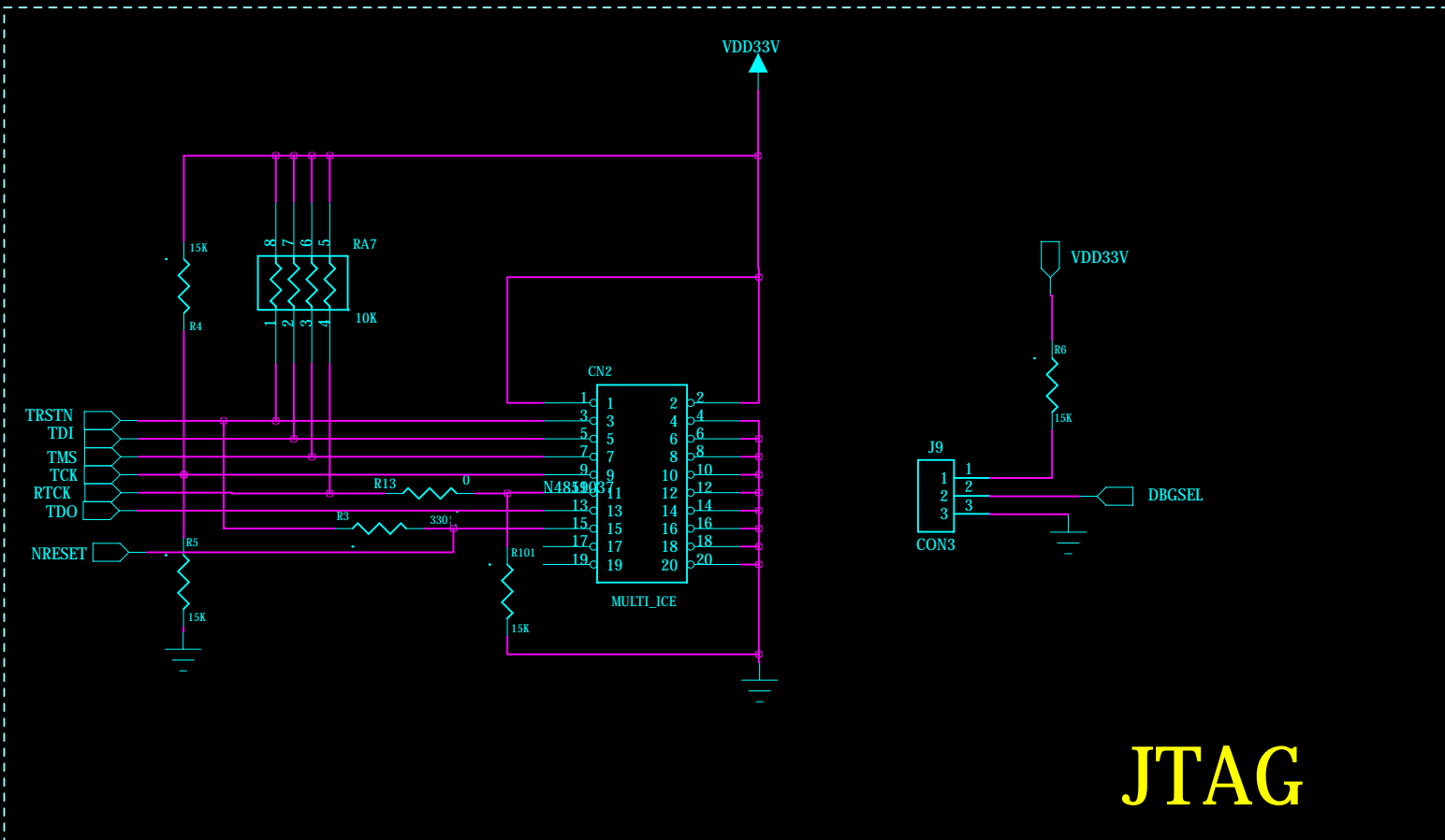
POWER LED



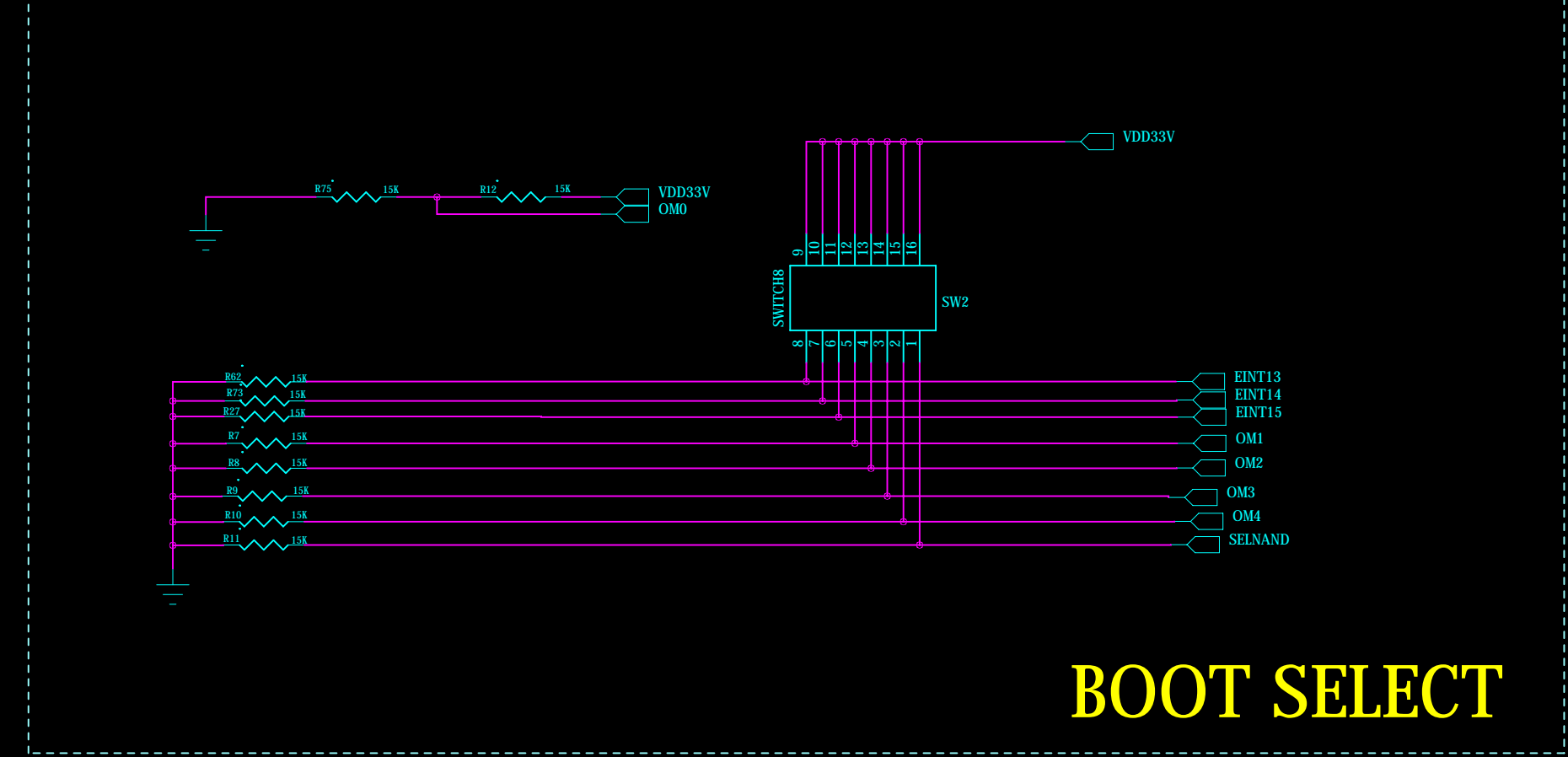
FIXED KONG



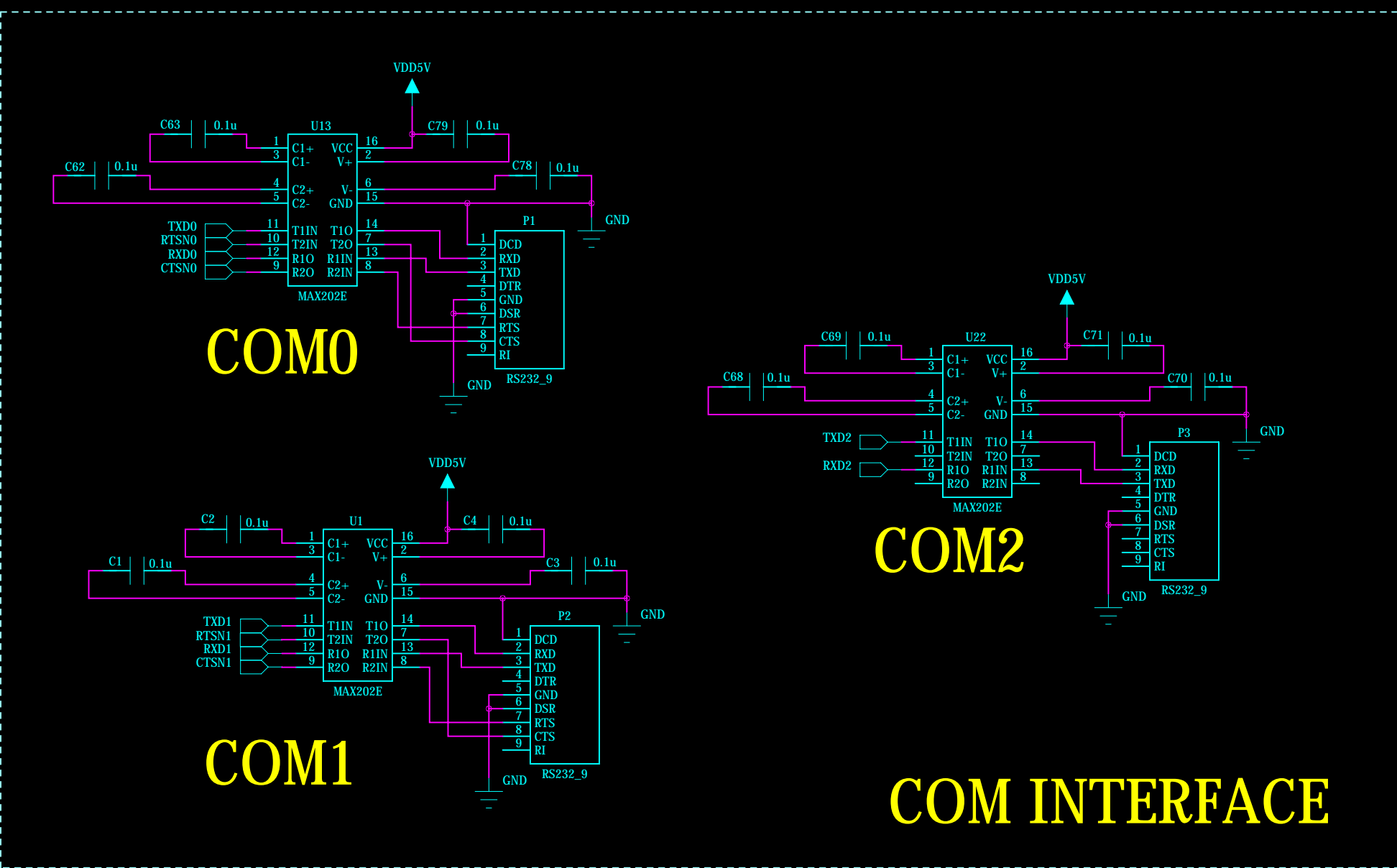
COMPANY:	TE6410 Expansion Board
TITLE:	Forlinx Embedded
HOME:	www.witech.com.cn



JTAG



BOOT SELECT

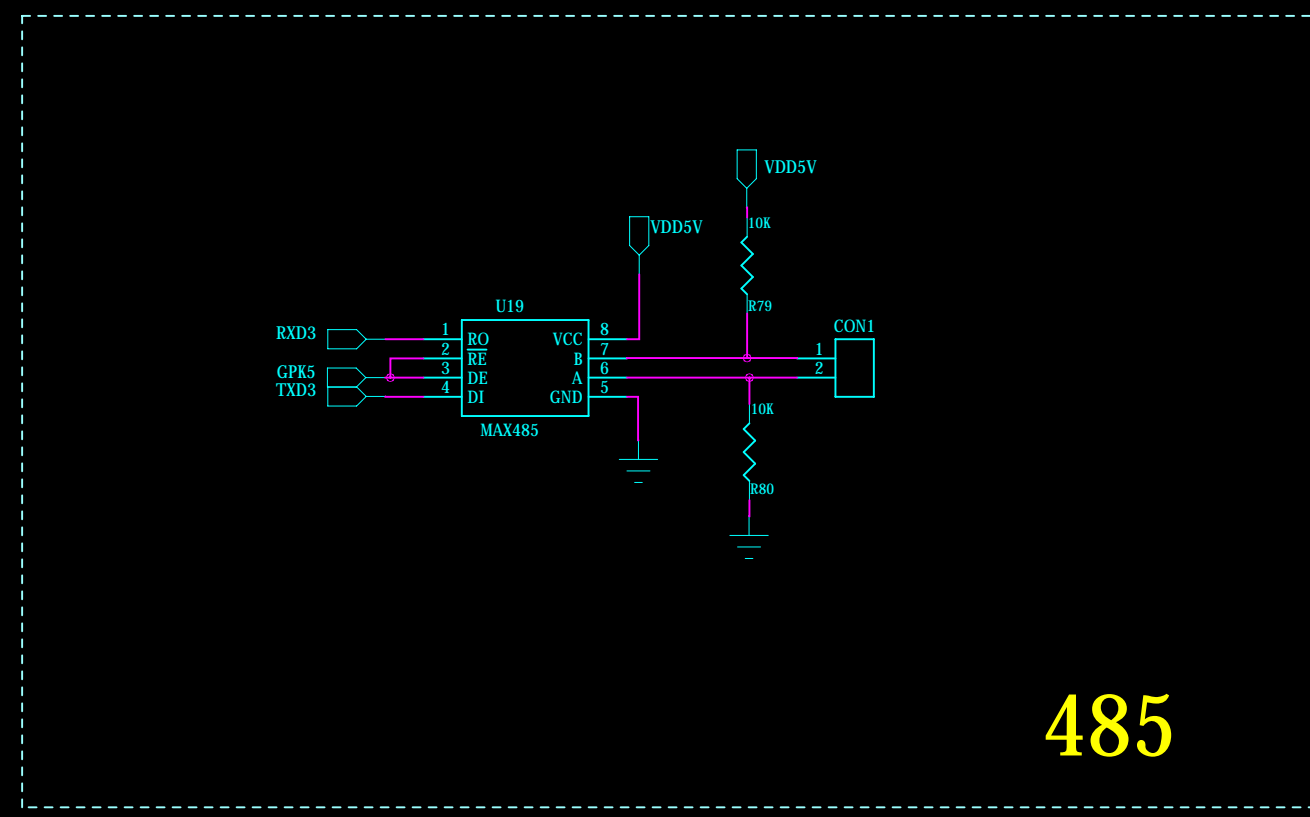


COM0

COM1

COM2

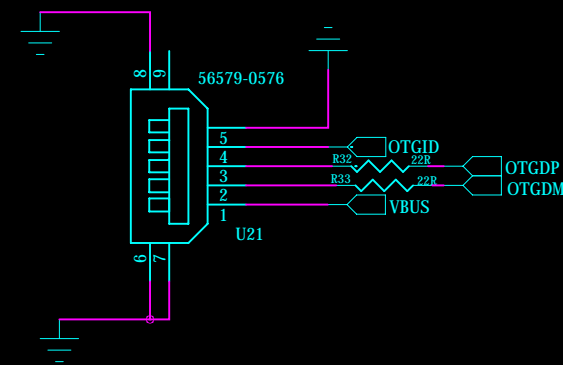
COM INTERFACE



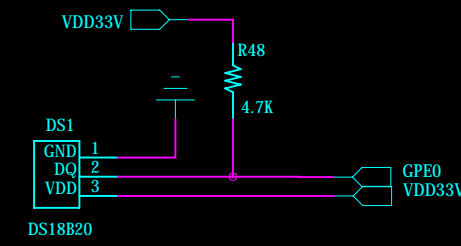
485

COMPANY:	TE6410 Expansion Board
TITLE:	Forlinx Embedded
HOME:	www.witech.com.cn

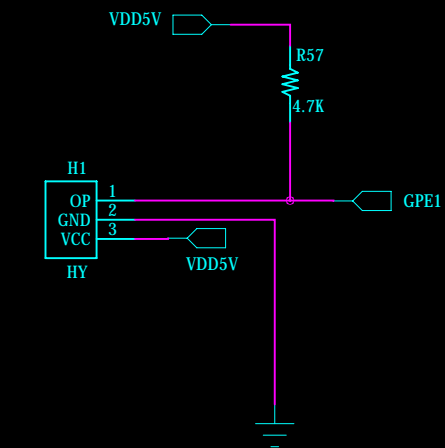
USB OTG



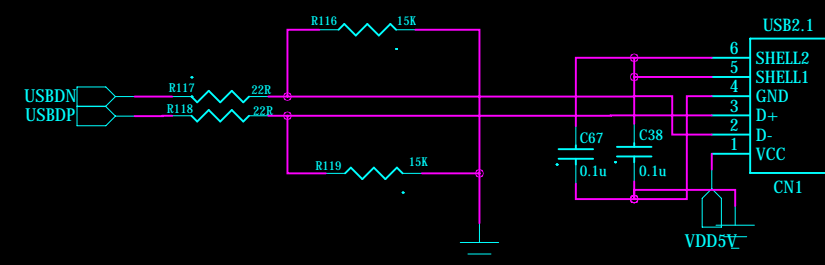
TEMPERATURE



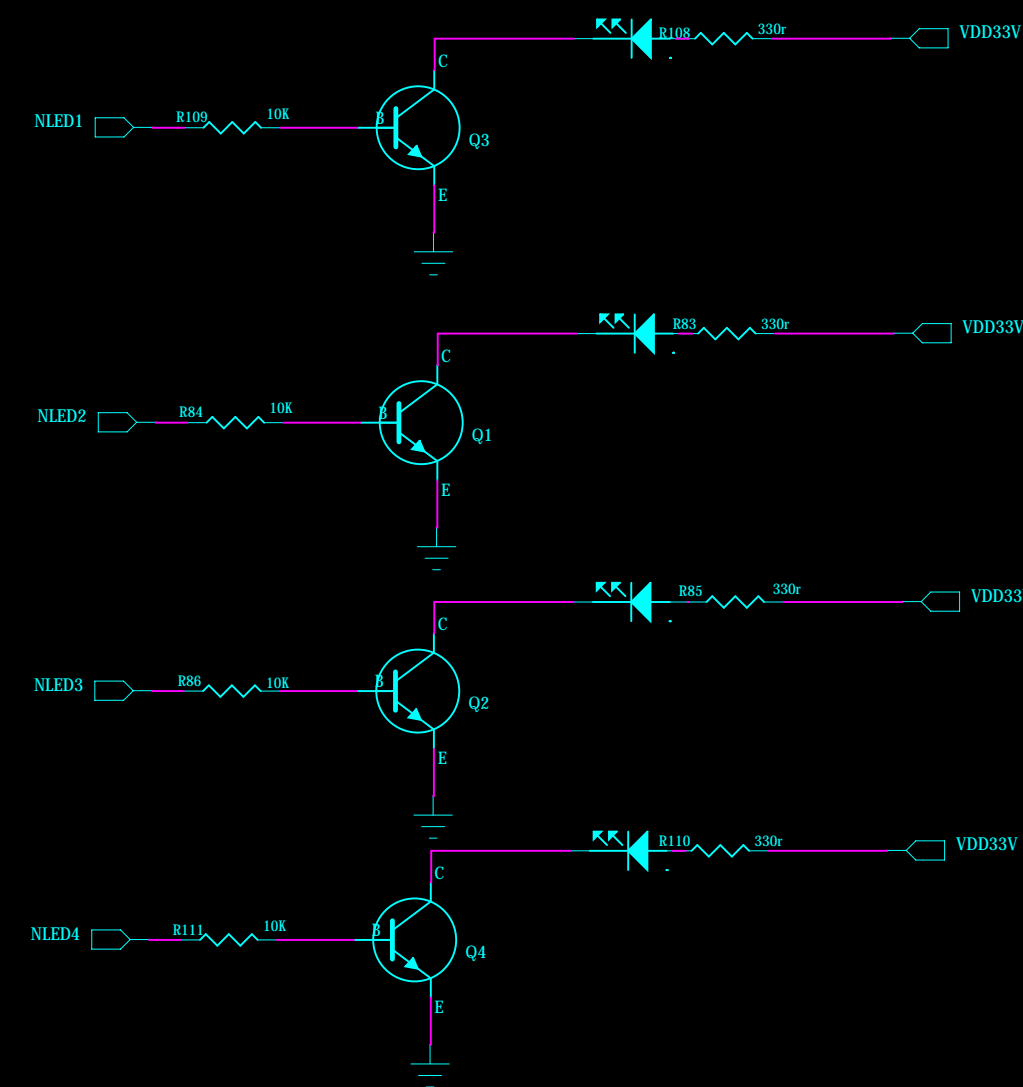
IRDA



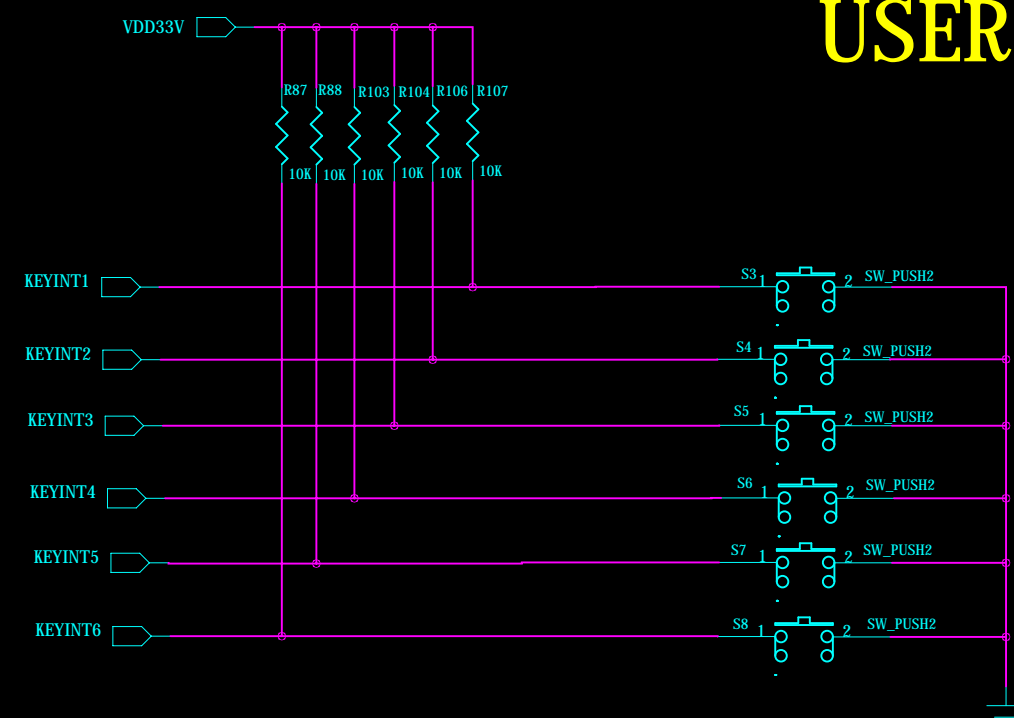
USB HOST

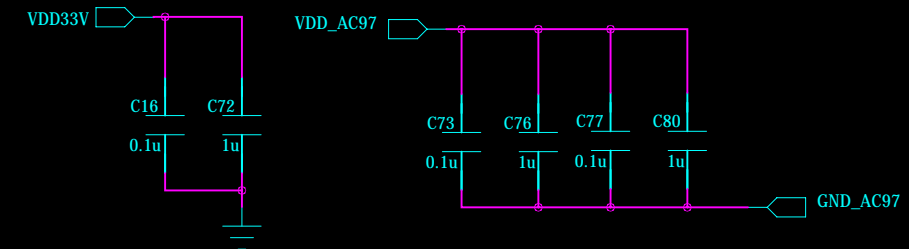
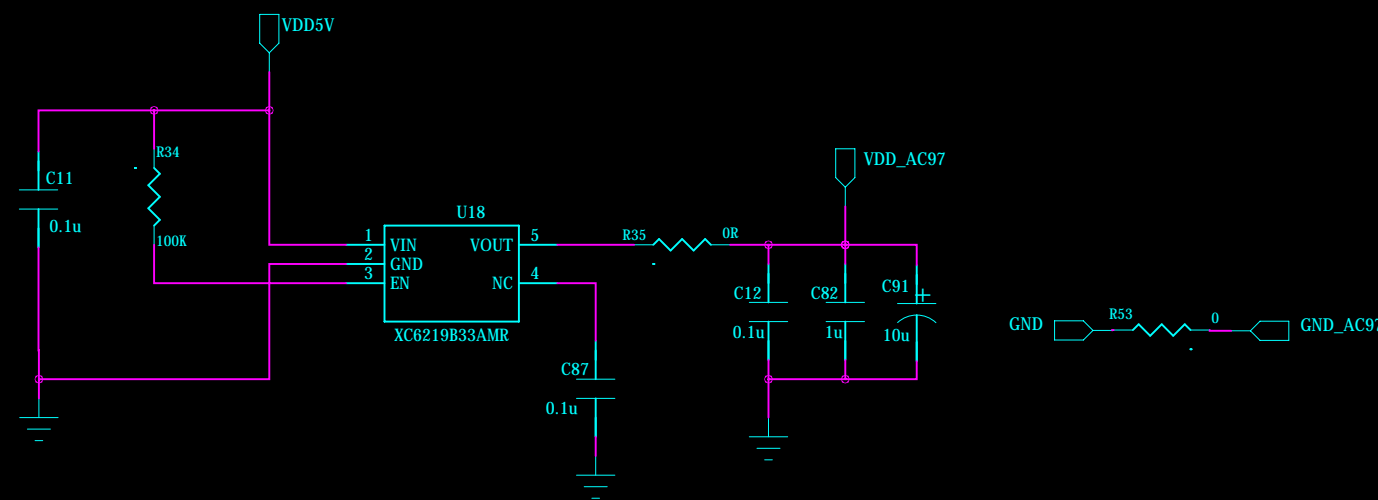


USER LED



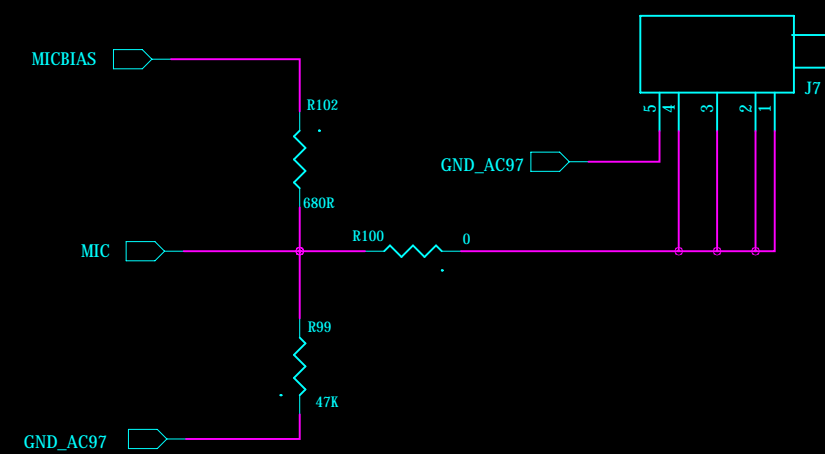
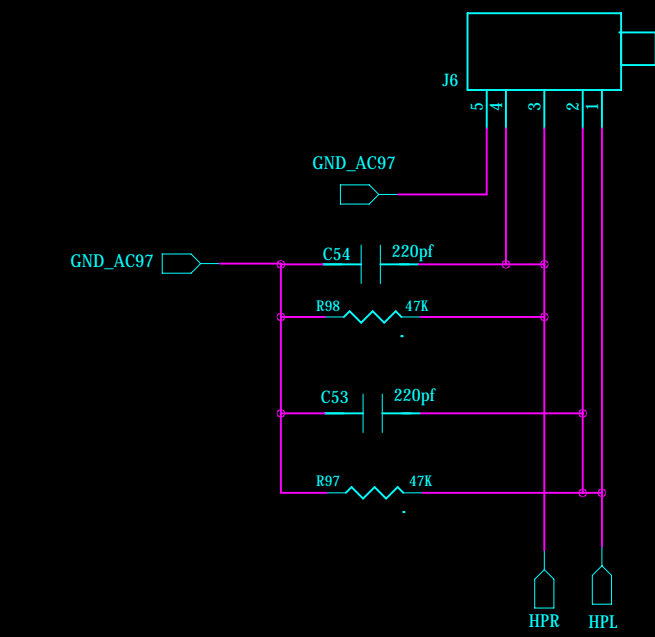
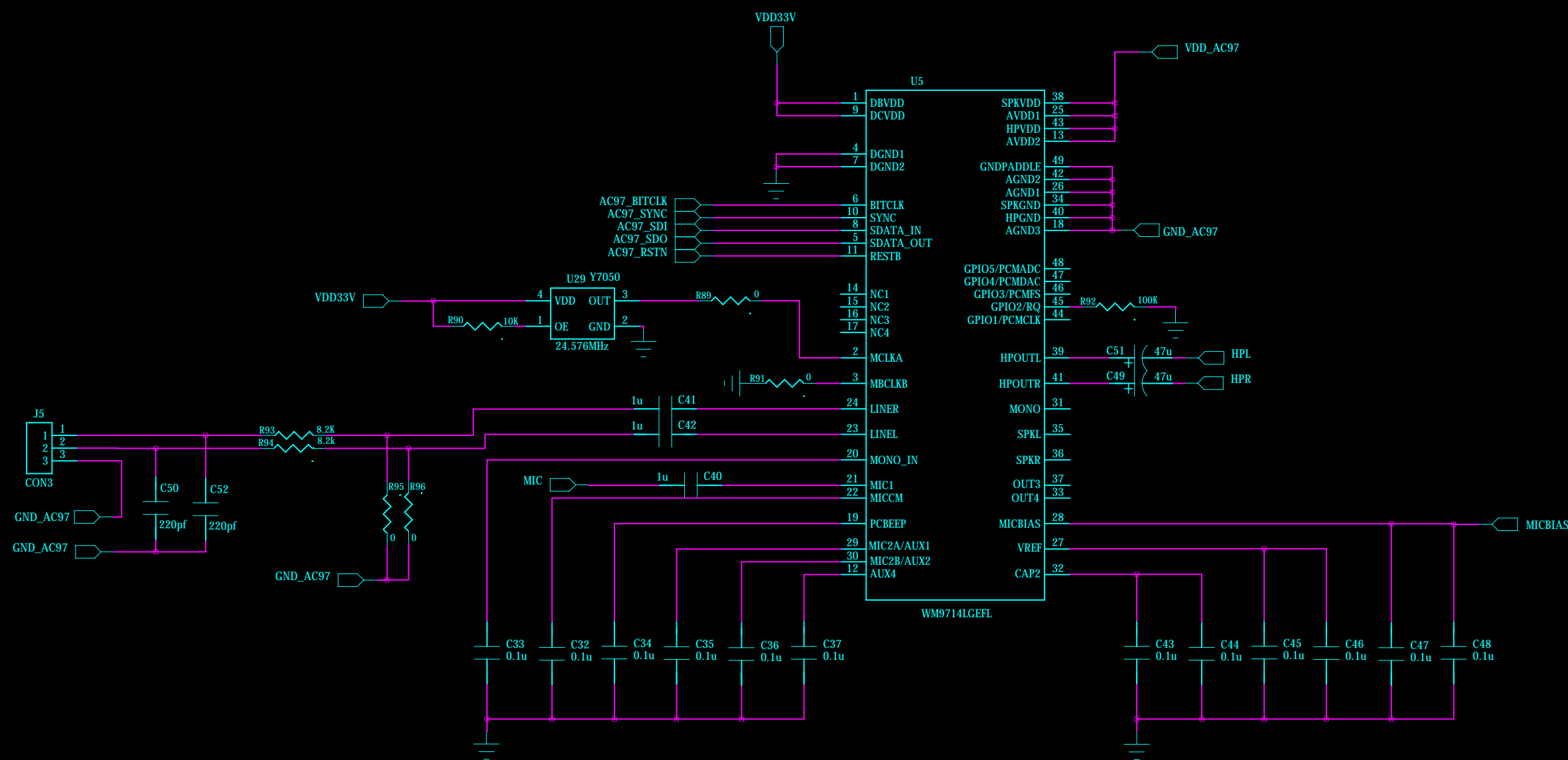
USER KEY





AUDIO POWER

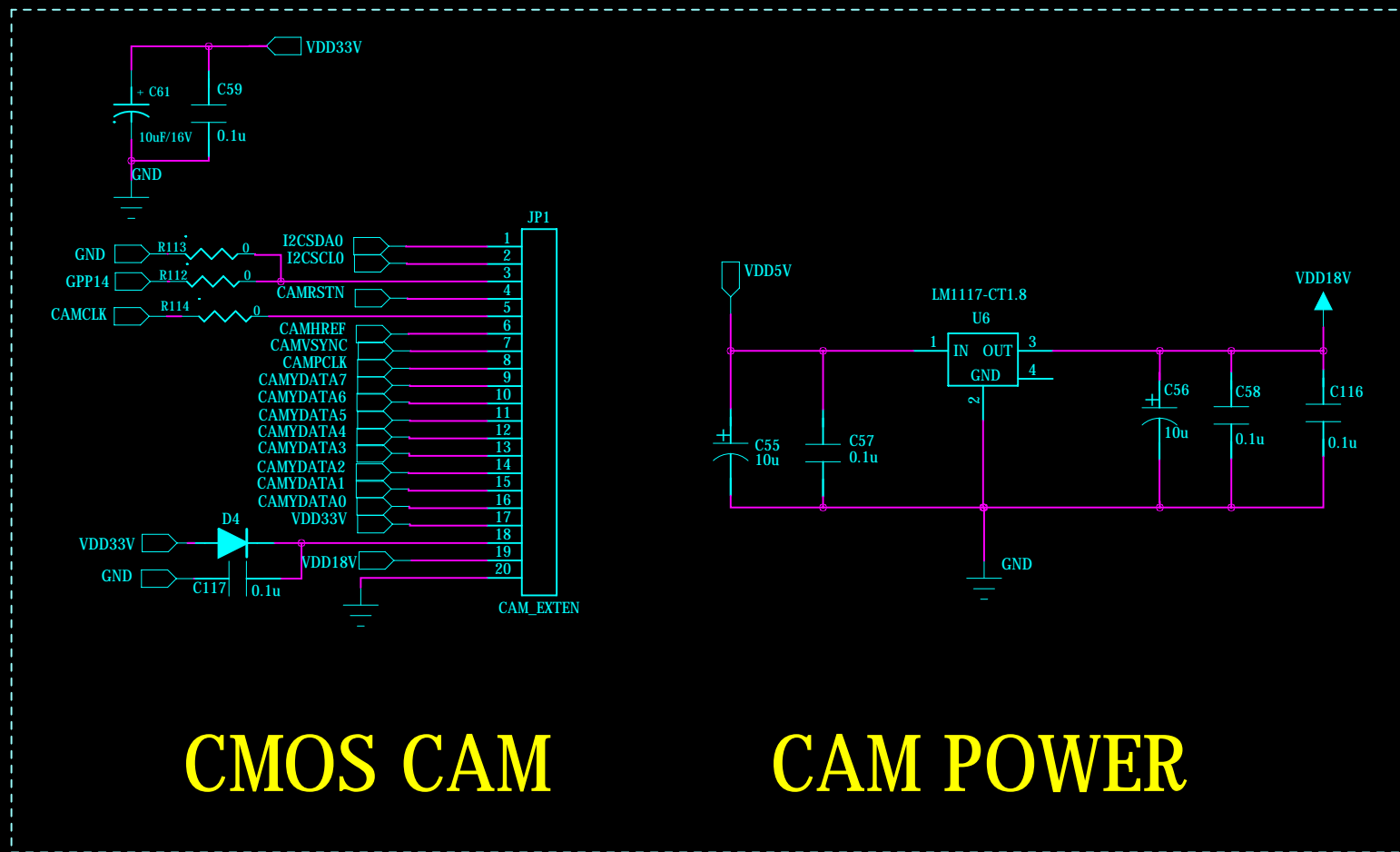
SPEAKER



MIC

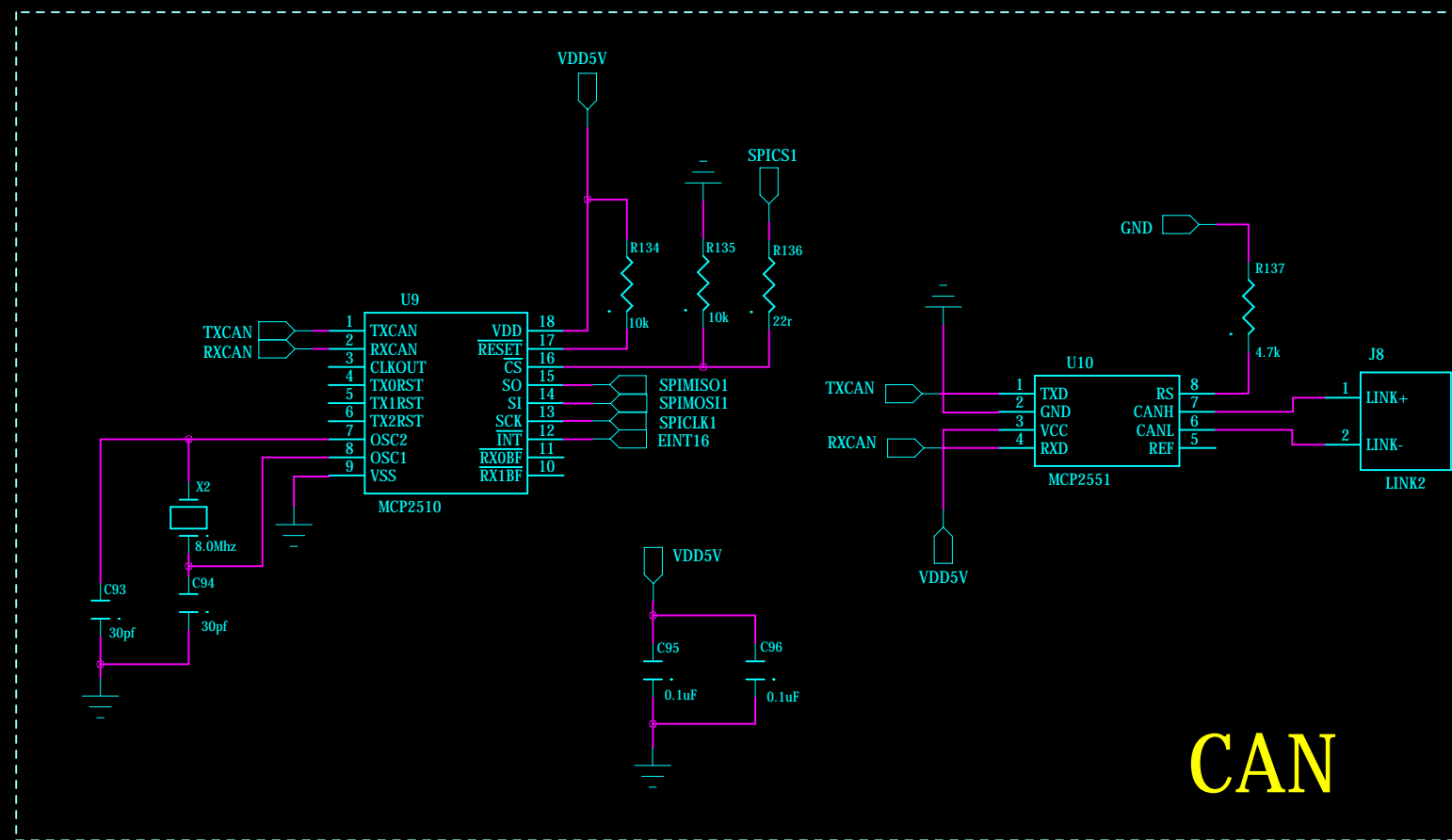
AUDIO

COMPANY:	TE6410 Expansion Board
TITLE:	Forlinx Embedded
HOME:	www.witech.com.cn

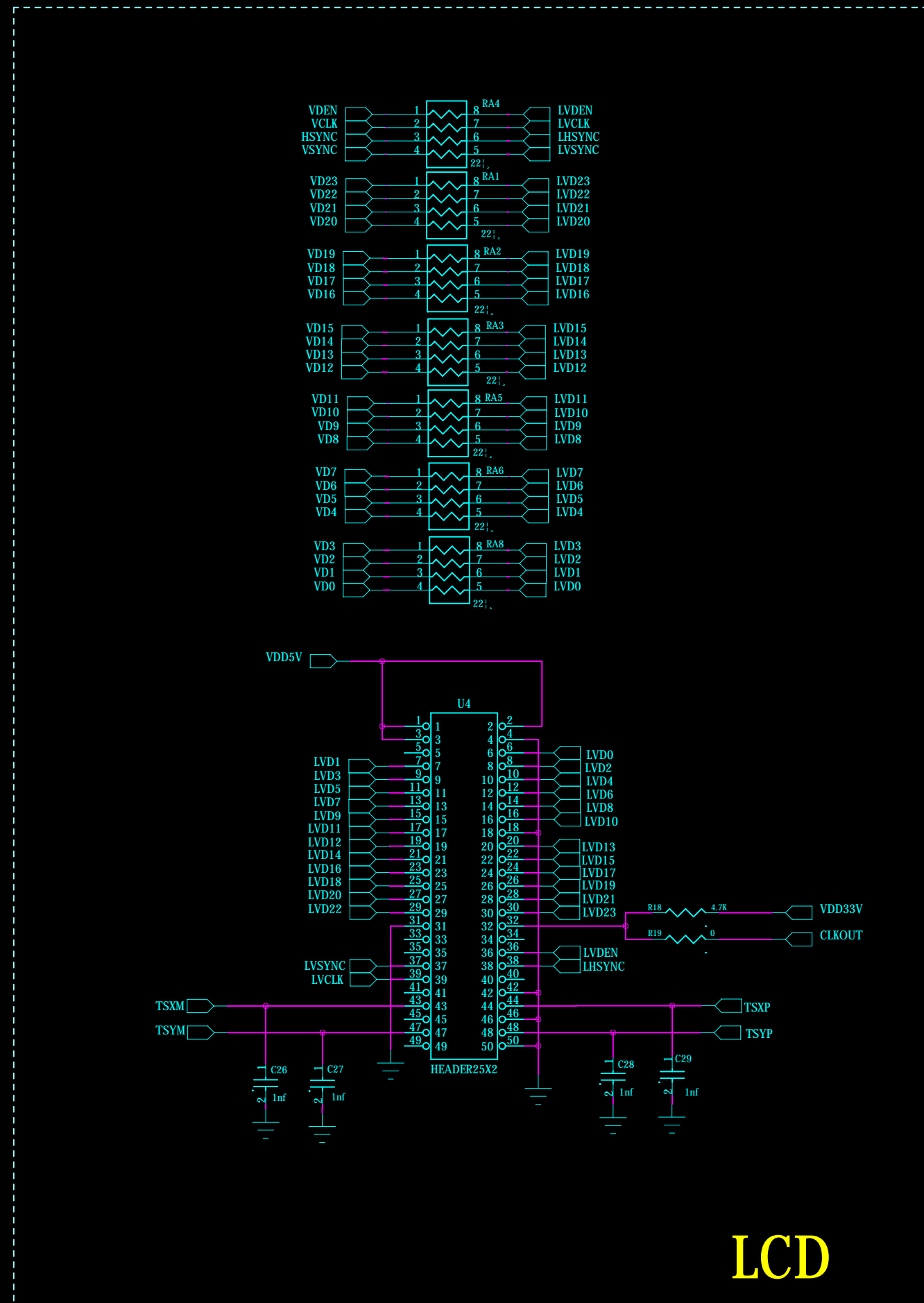


CMOS CAM

CAM POWER

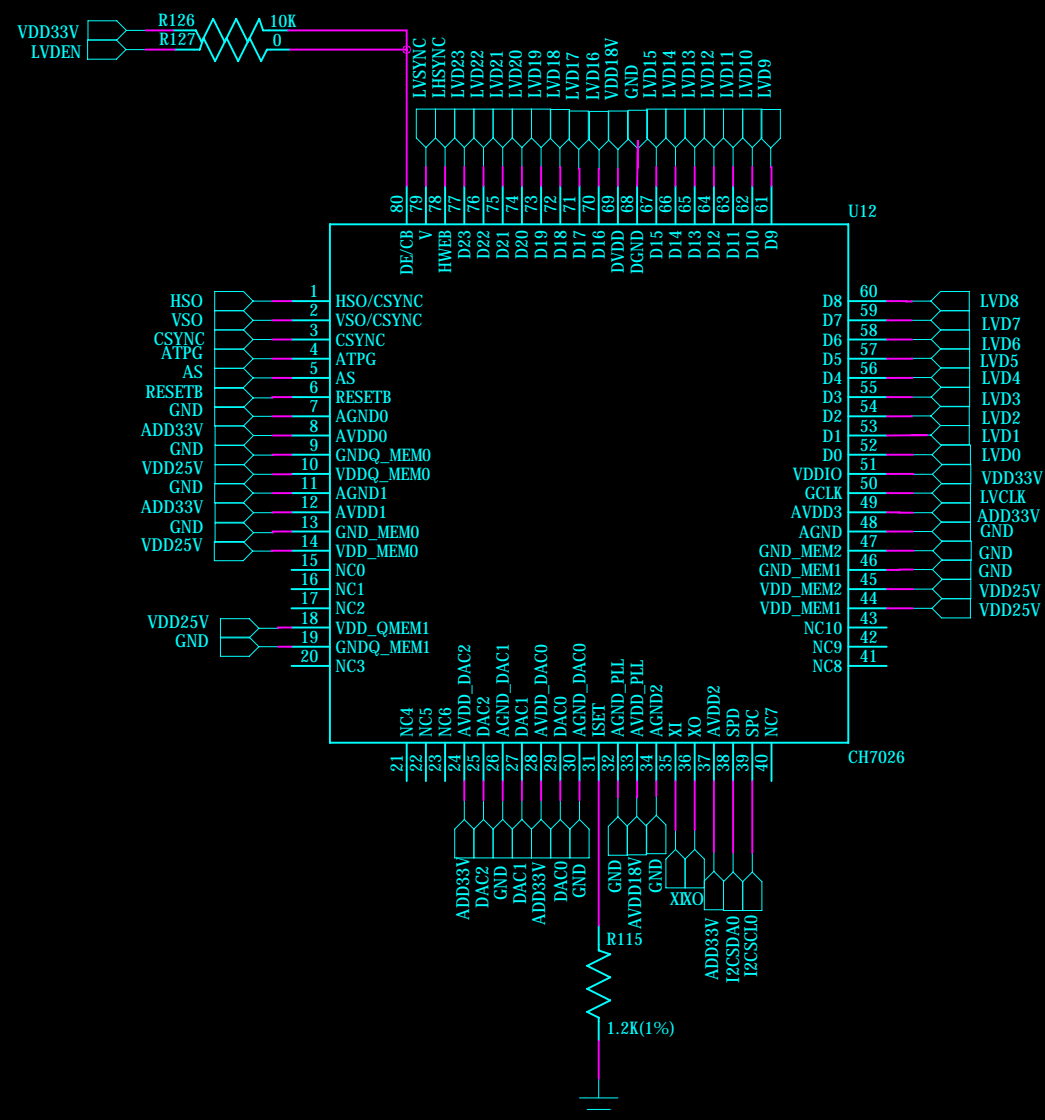


CAN

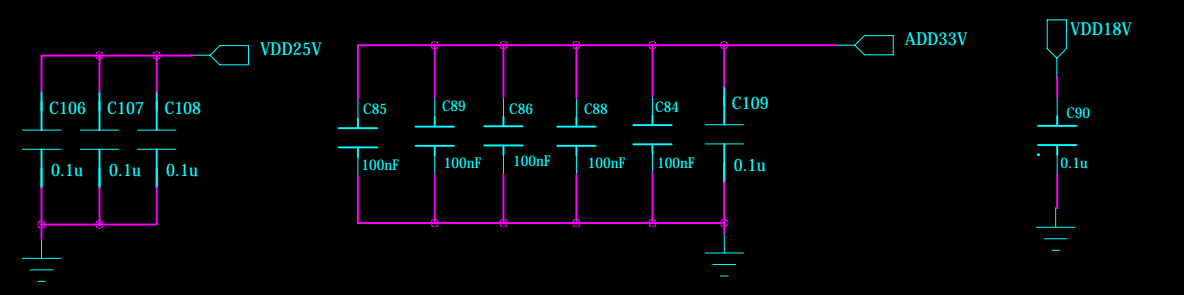
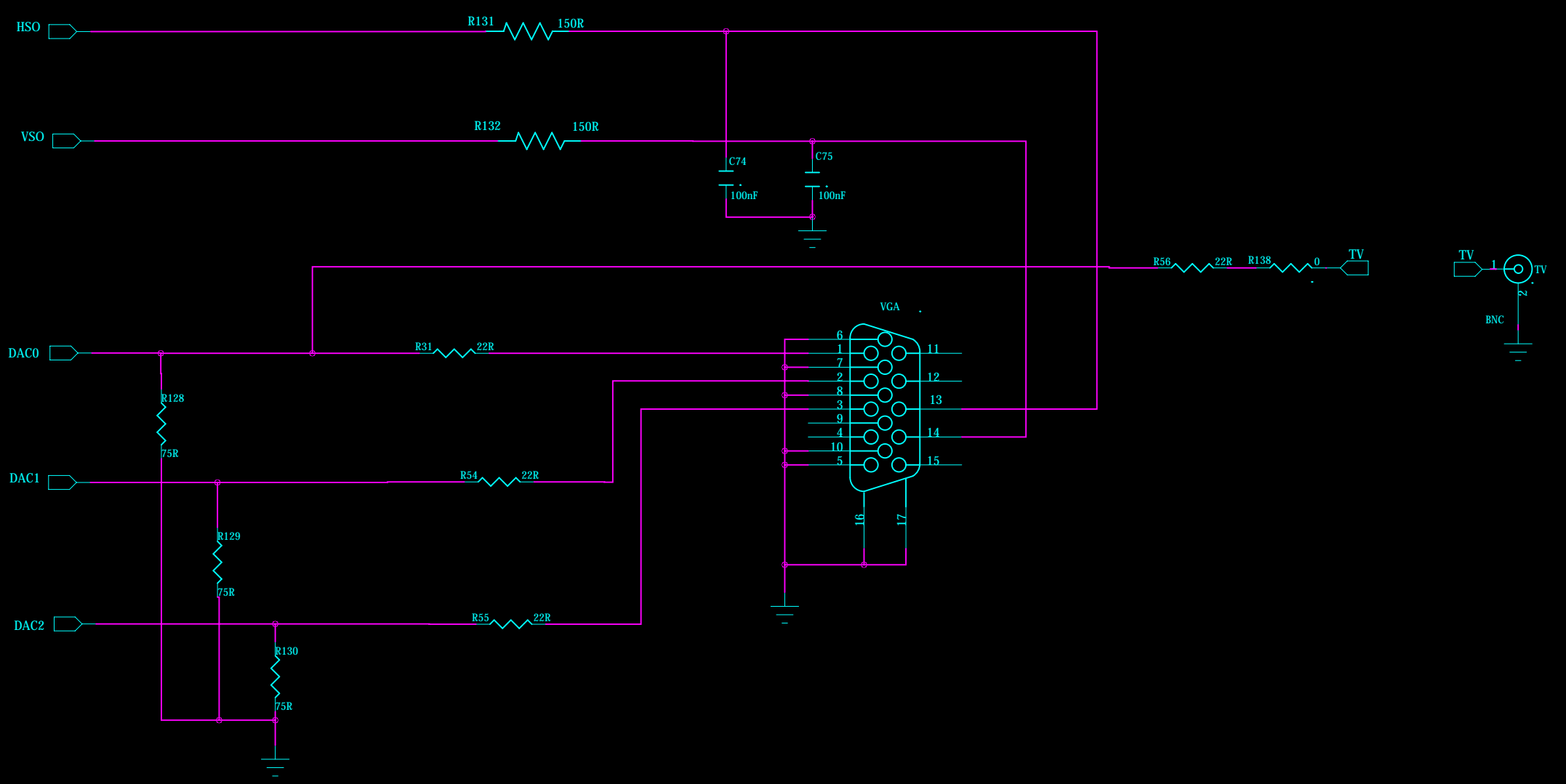
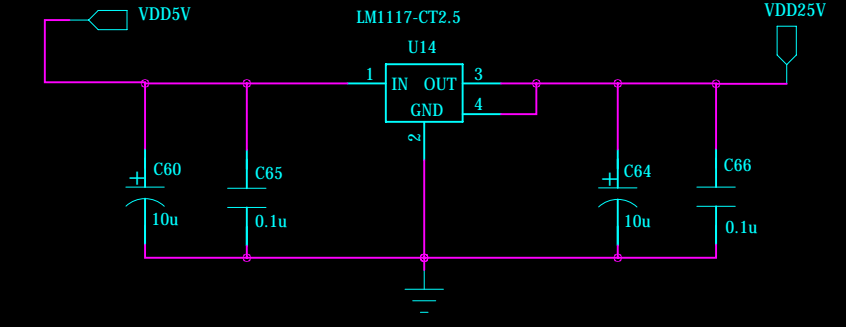
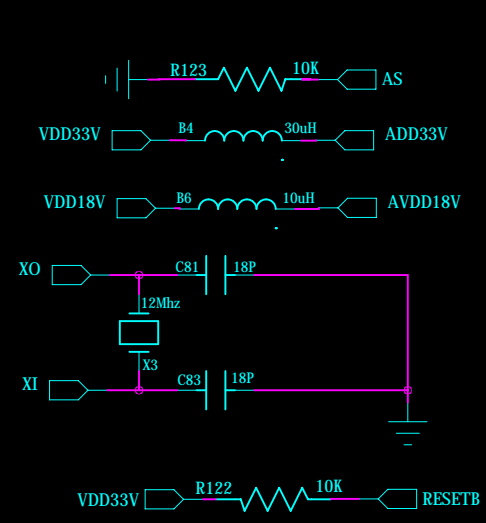


LCD

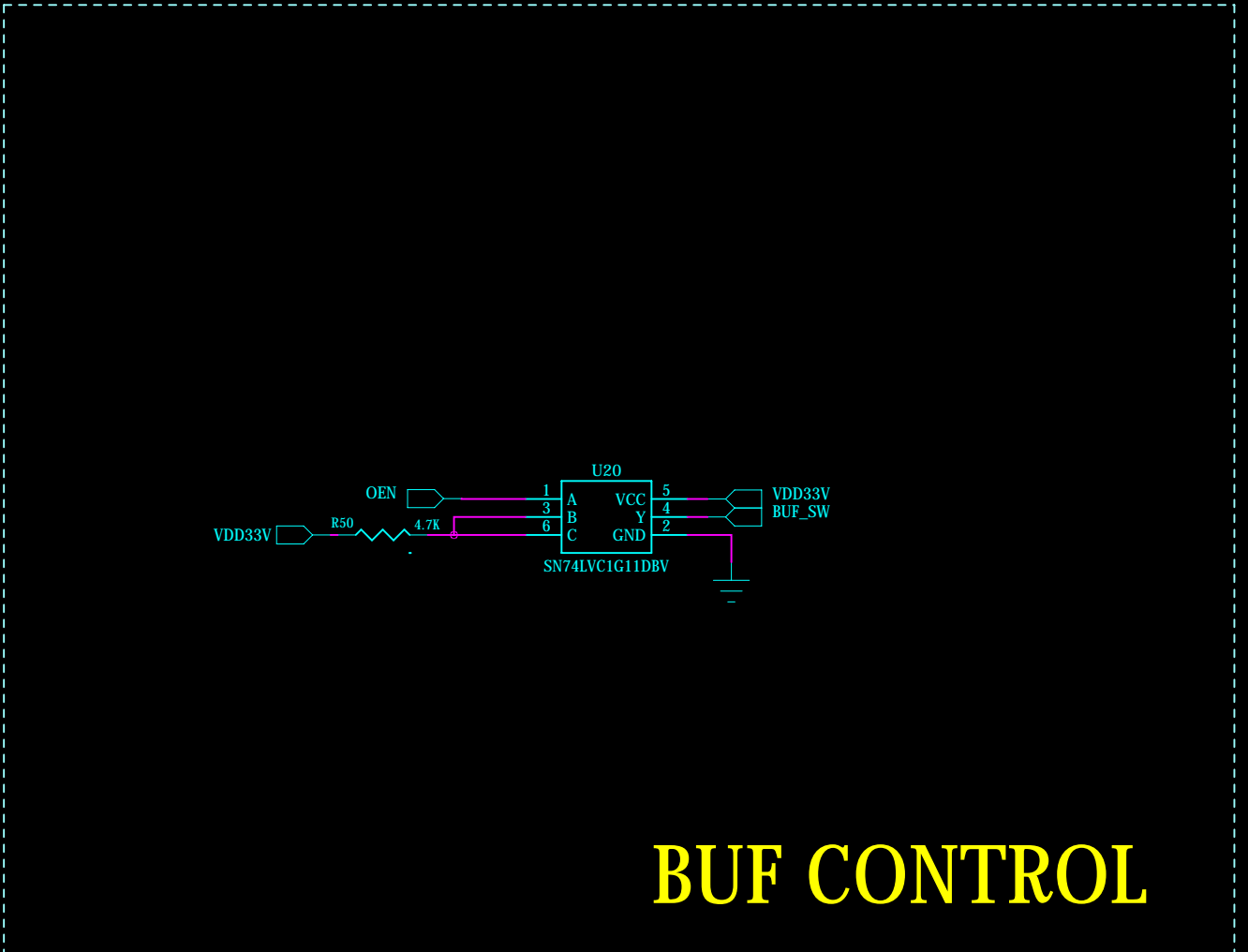
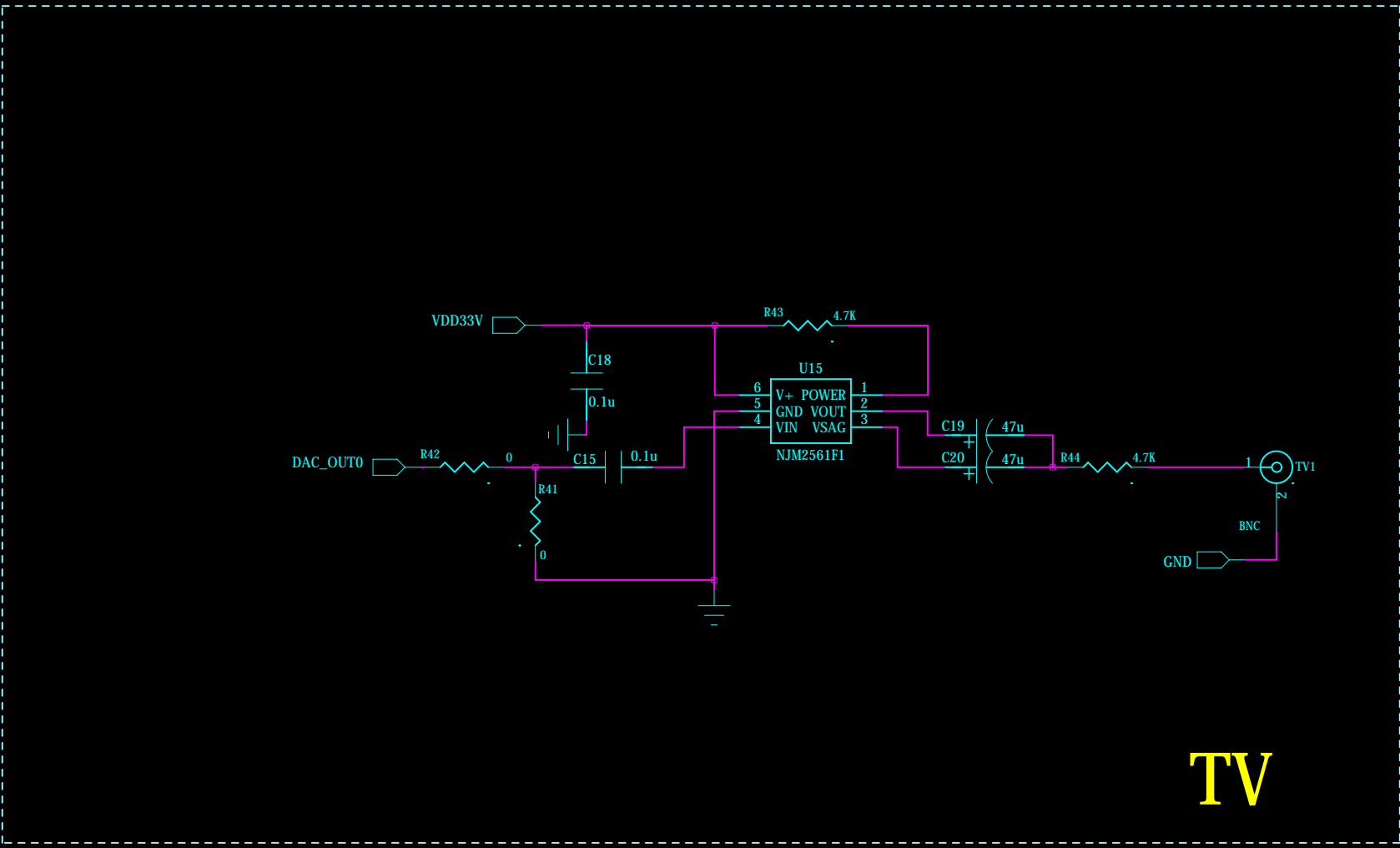
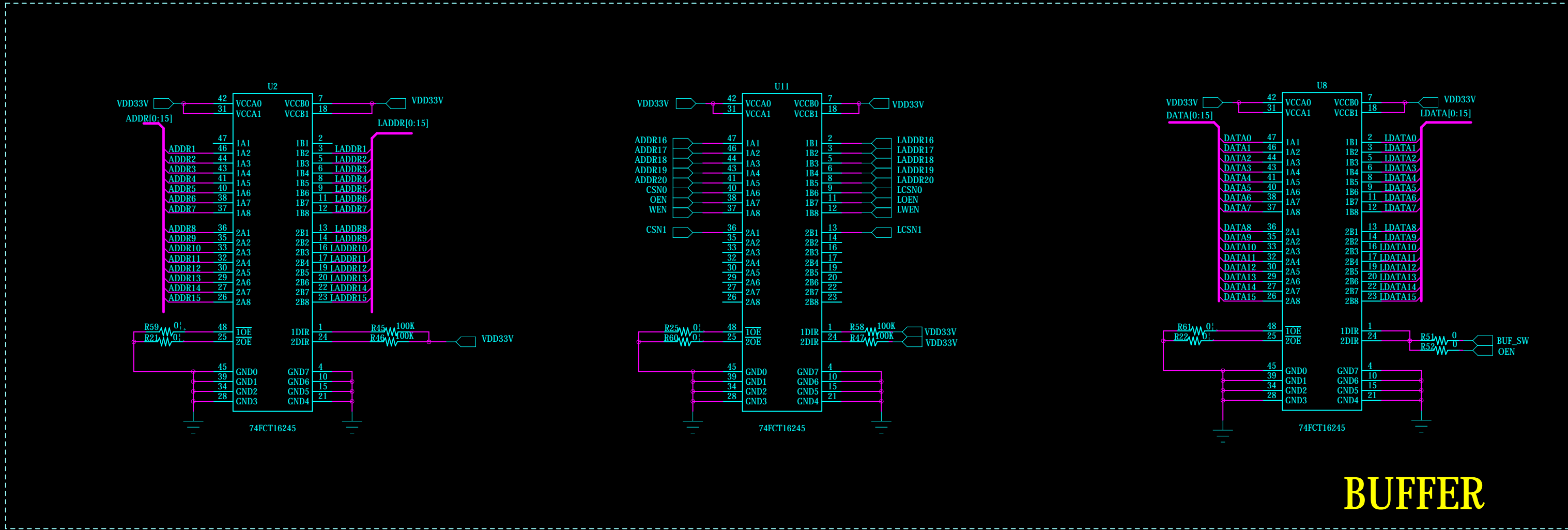
COMPANY:	TE6410 Expansion Board
TITLE:	Forlinx Embedded
HOME:	www.witech.com.cn



VGA



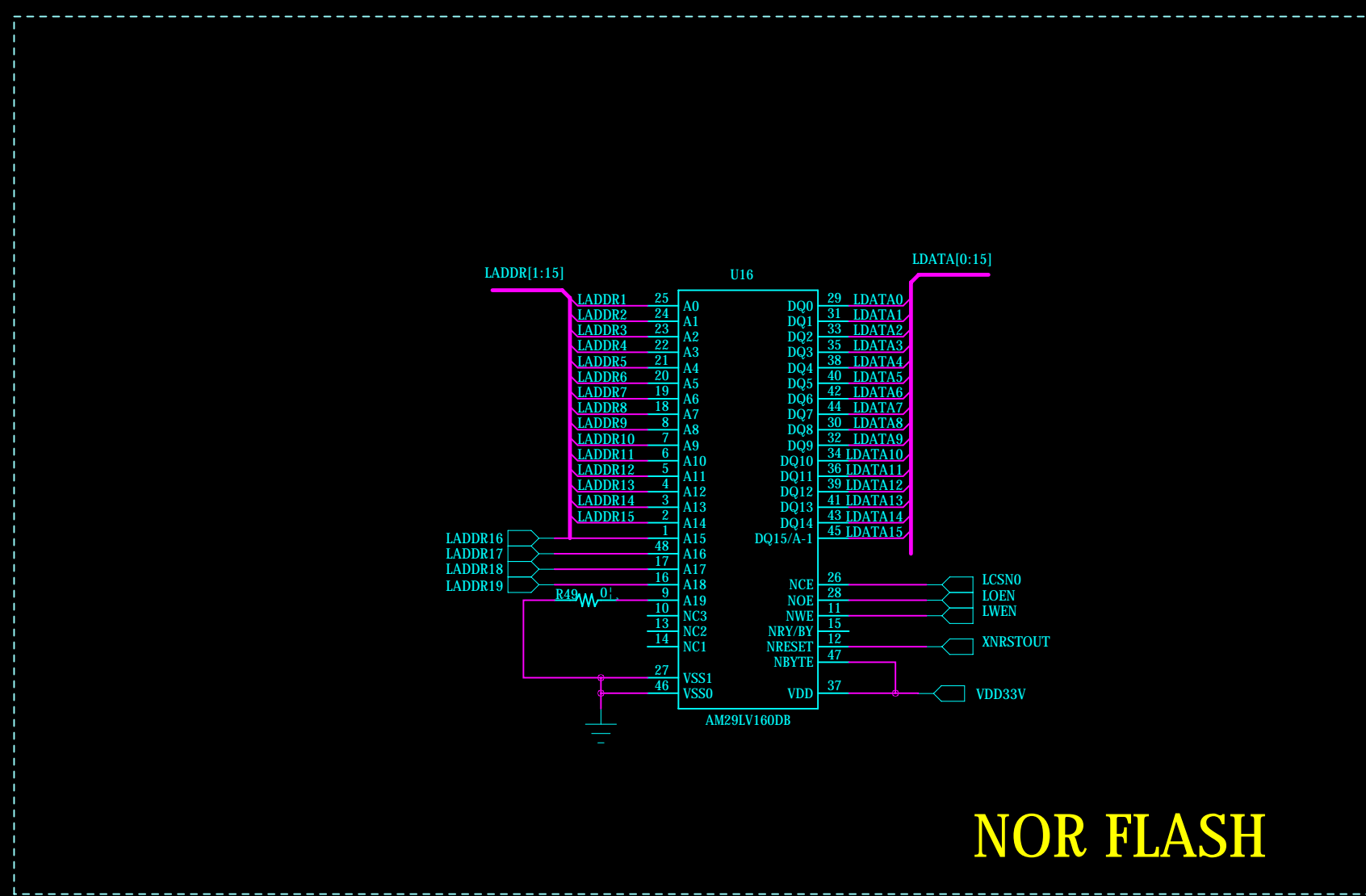
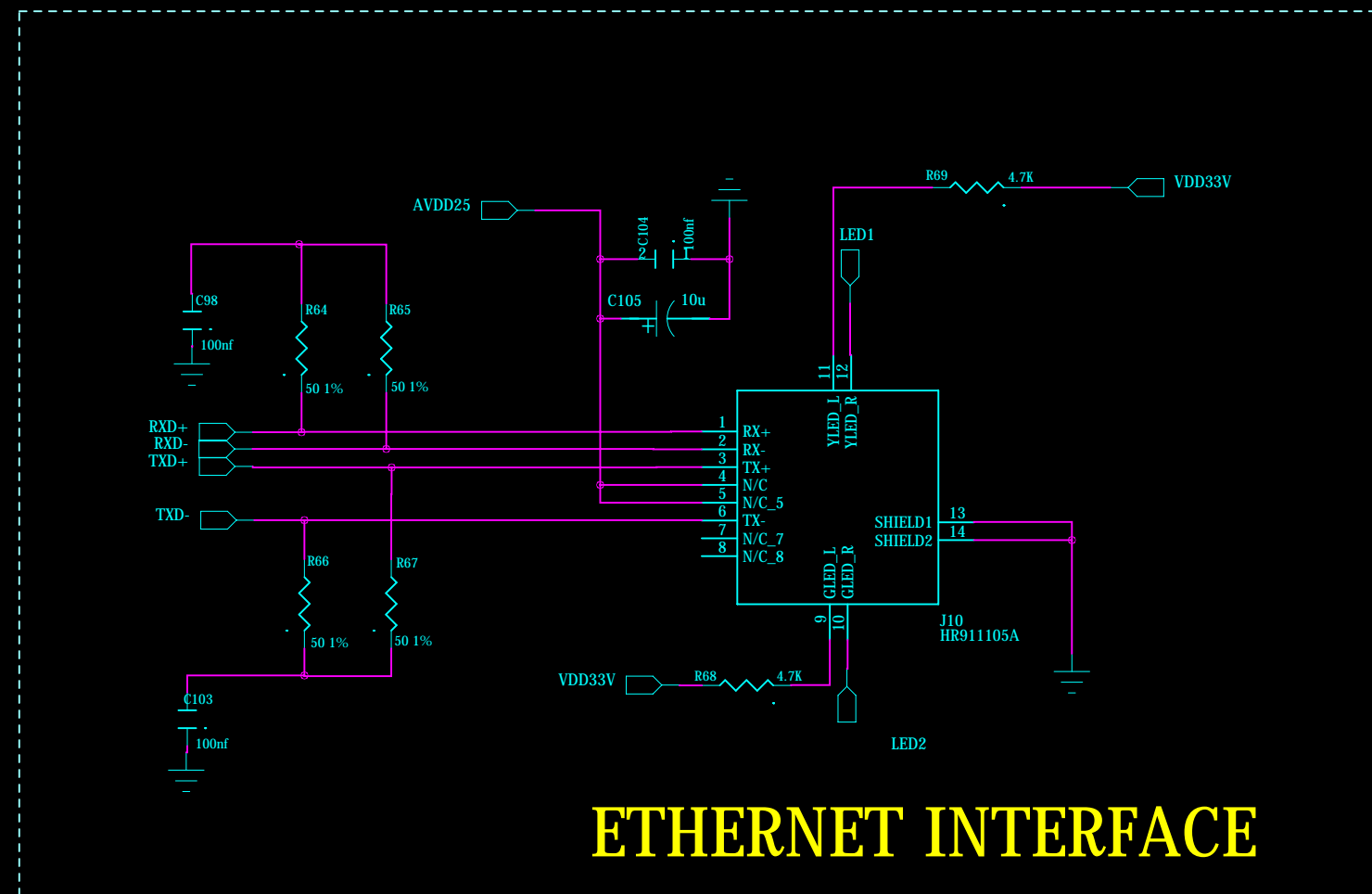
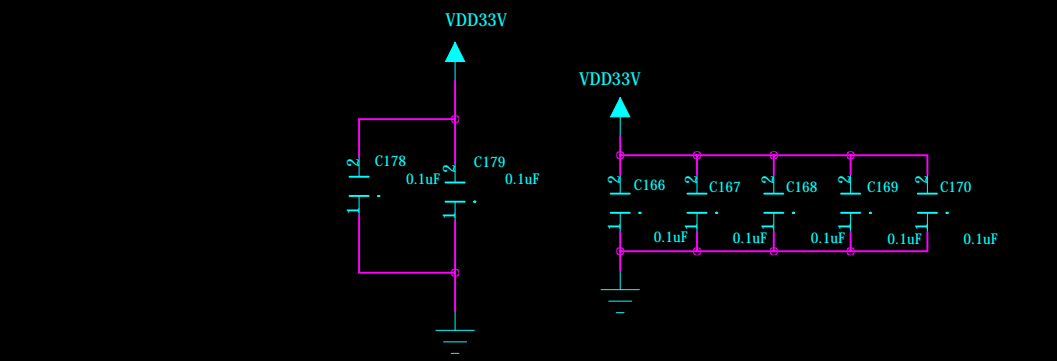
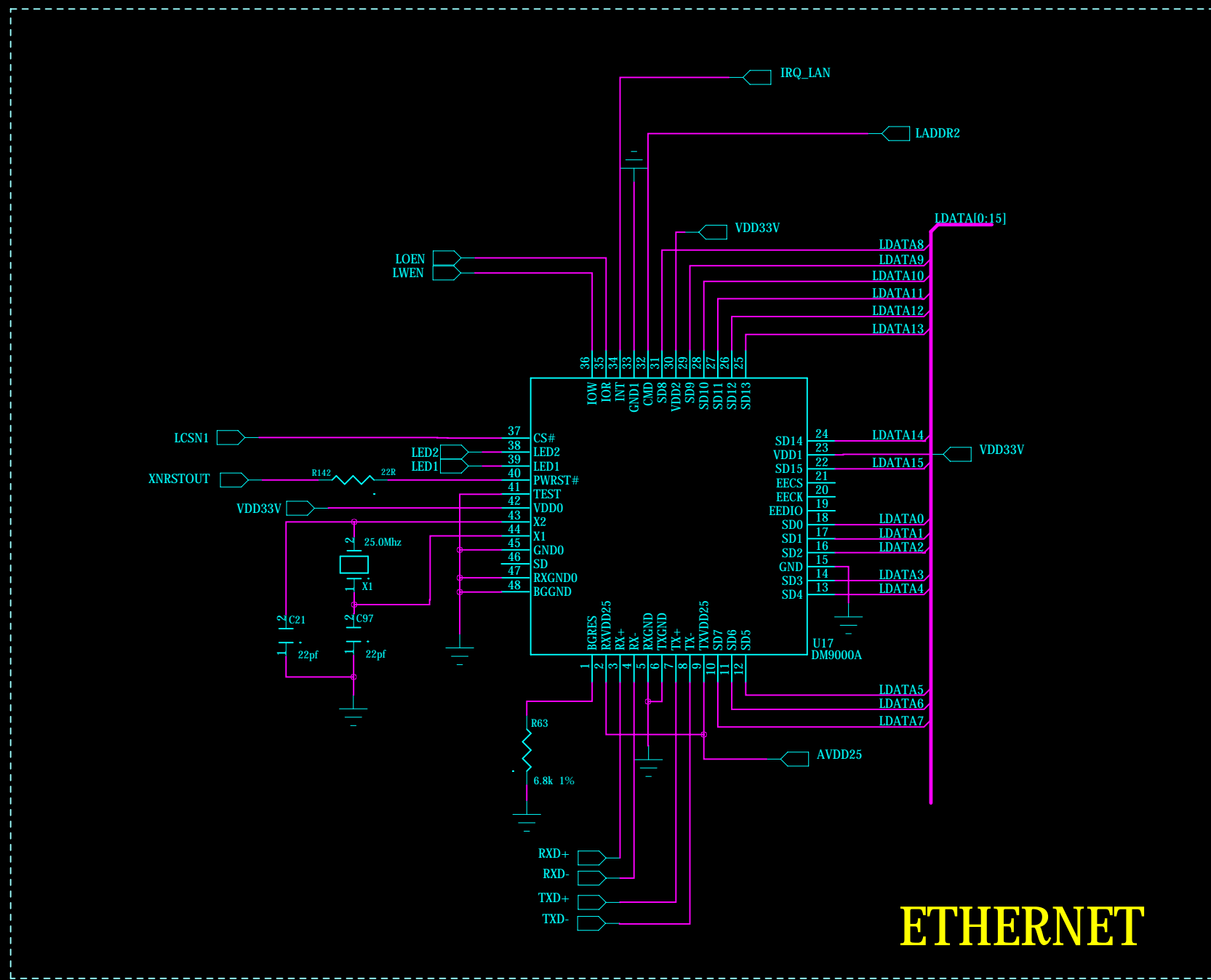
COMPANY:	TE6410 Expansion Board
TITLE:	Forlinx Embedded
HOME:	www.witech.com.cn



COMPANY: **TE6410 Expansion Board**

TITLE: **Forlinx Embedded**

HOME: **www.witech.com.cn**



COMPANY:	TE6410 Expansion Board
TITLE:	Forlinx Embedded
HOME:	www.witech.com.cn