



Doc. Version	0.2
Total Page	18
Date	2007/03/07

Product Specification

4.3" COLOR TFT-LCD MODULE

MODEL NAME: A043FL01 V2

< ◆ > Preliminary Specification

< > Final Specification

Note: The content of this specification is subject to change.

© 2006 AU Optronics
All Rights Reserved,
Do Not Copy.



Version 0.2

Page: 2/18

Record of Revision

Version	Revise Date	Page	Content
0.0	2007/01/05		First draft.
0.1	2007/01/22	19	Remove application circuit
0.2	2007/03/07	6	Update outline drawing



Contents:

<u>A.</u>	<u>General Description.....</u>	<u>4</u>
<u>B.</u>	<u>Features.....</u>	<u>4</u>
<u>C.</u>	<u>Physical Specifications.....</u>	<u>5</u>
<u>D.</u>	<u>Outline Dimension (Tentative).....</u>	<u>6</u>
<u>E.</u>	<u>Electrical Specifications.....</u>	<u>7</u>
1.	Pin Assignment.....	7
2.	Absolute Maximum Ratings	8
3.	Electrical Characteristics.....	9
a.	TFT- LCD Panel	9
b.	Backlight Driving Conditions.....	9
4.	AC Timing	10
a.	Power on/off sequence	10
b.	Timing Condition	11
c.	Timing Diagram	11
5.	Command and Register Map	12
<u>F.</u>	<u>Optical specifications (Note 1, 2).....</u>	<u>13</u>
<u>G.</u>	<u>Reliability Test Items.....</u>	<u>15</u>
<u>H.</u>	<u>Touch Screen Panel Specifications.....</u>	<u>16</u>
1.	FPC Pin Assignment	16
2.	Electrical Characteristics.....	16
3.	Mechanical Characteristics	16
4.	Life test Condition	17
5.	Attention	17
<u>I.</u>	<u>Packing Form</u>	<u>18</u>

A. General Description

A043FL01 V2 is an LTPS transmissive type Thin Film Transistor Liquid crystal Display (TFT-LCD). This model is composed of a TFT-LCD, a driver, an FPC (flexible printed circuit), a backlight unit and a touch panel.

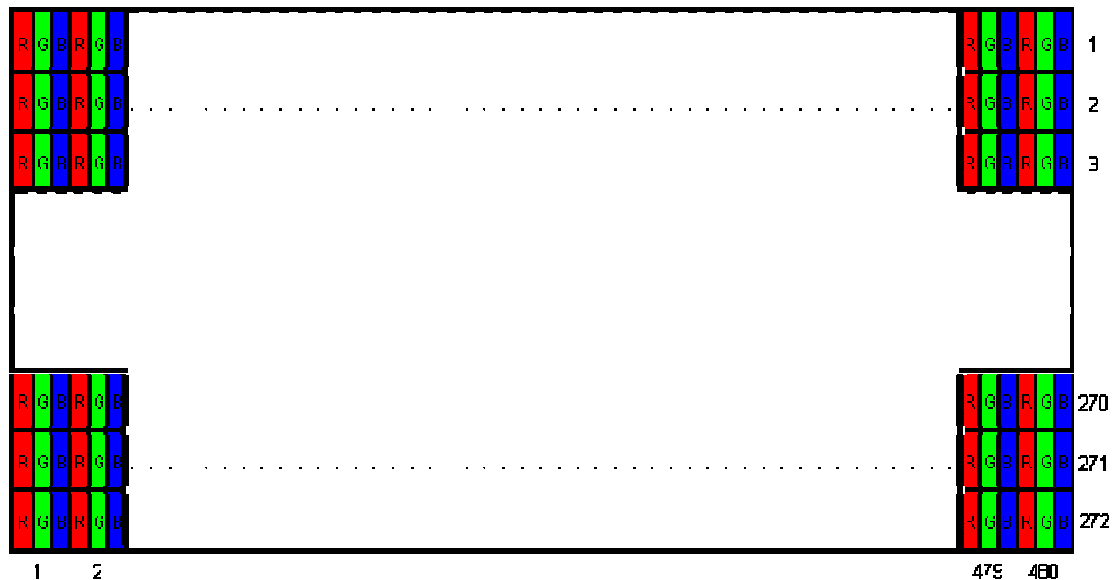
B. Features

- I 4.3-inch display with touch panel
- I WQVGA resolution in RGB stripe dot arrangement
- I DC/DC integrated
- I High brightness
- I Interfaces: parallel RGB 24-bit
- I Wide viewing angle
- I Integrated touch screen panel (resistive type)
- I 3-in-1 FPC for LCD signals, backlight LED power and touch panel
- I Green design

C. Physical Specifications

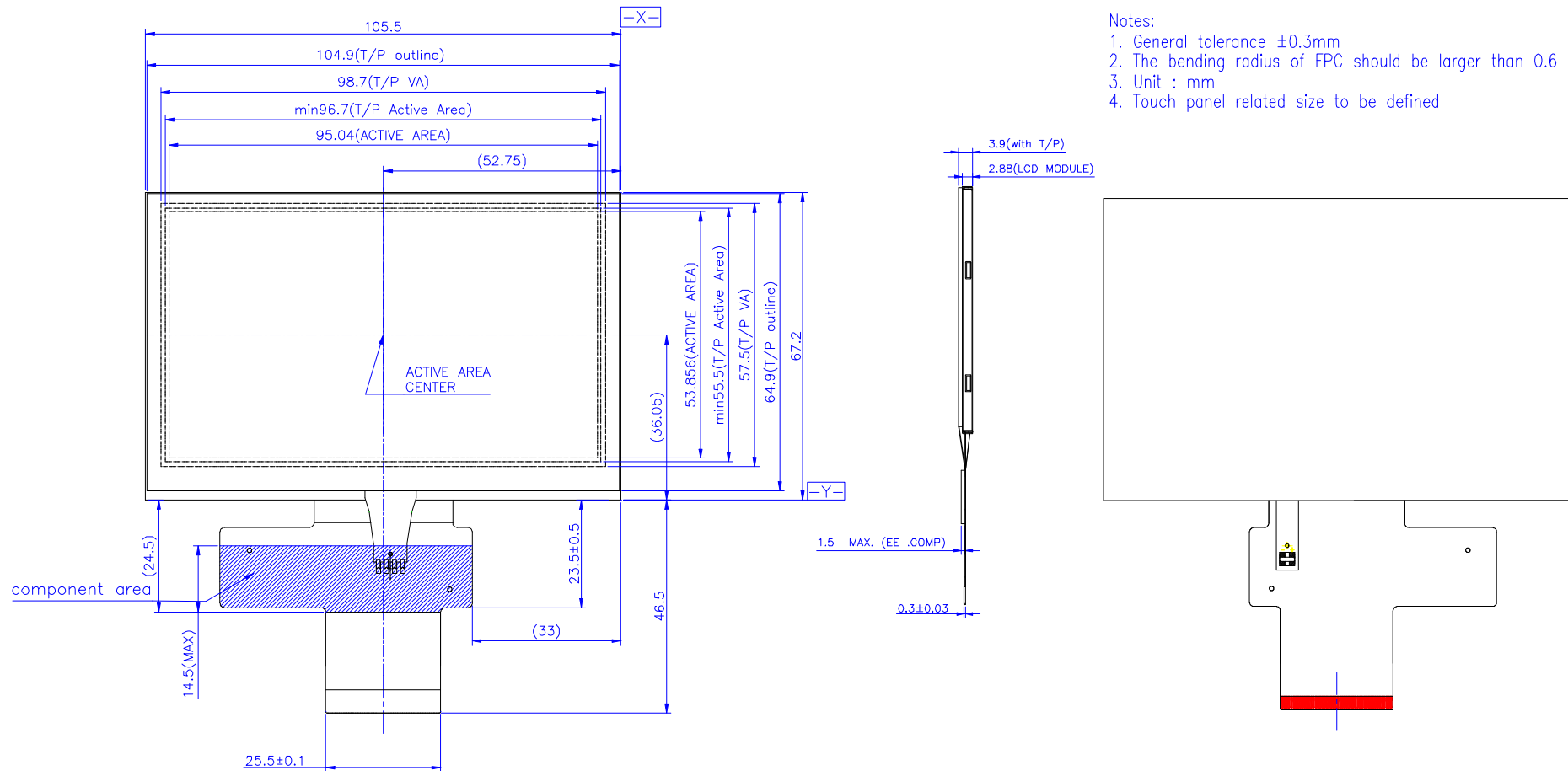
NO.	Item	Unit	Specification	Remark
1	Display Resolution	dot	480 RGB (H)×272(V)	
2	Active Area	mm	95.04(H)×53.856(V)	
3	Screen Size	inch	4.3(Diagonal)	
4	Dot Pitch	mm	0.066(H)×0.198(V)	
5	Color Configuration	--	R. G. B. Stripe	Note 1
6	Color Depth	--	16.7M Colors	
7	Overall Dimension	mm	105.5(H) × 67.2(V) × 3.9(T)	Note 2
8	Weight	g	TBD	
9	Touch panel surface treatment	--	Hardness 3H	
10	Display Mode	--	Normally White	
11	Gray Level Inversion Direction		6 O'clock	

Note 1: Below figure shows dot stripe arrangement.



Note 2: Not including FPC. Refer to the drawing next page for further information.

D. Outline Dimension (Tentative)



E. Electrical Specifications

1. Pin Assignment

No.	Pin Name	I/O	Description	Remarks
1	GND	G	GND	
2	GND	G	GND	
3	DVDD	PI	Power supply	
4	DVDD	PI	Power supply	
5	R0	I	Red Data Signal (LSB)	
6	R1	I	Red Data Signal	
7	R2	I	Red Data Signal	
8	R3	I	Red Data Signal	
9	R4	I	Red Data Signal	
10	R5	I	Red Data Signal	
11	R6	I	Red Data Signal	
12	R7	I	Red Data Signal (MSB)	
13	G0	I	Green Data Signal (LSB)	
14	G1	I	Green Data Signal	
15	G2	I	Green Data Signal	
16	G3	I	Green Data Signal	
17	G4	I	Green Data Signal	
18	G5	I	Green Data Signal	
19	G6	I	Green Data Signal	
20	G7	I	Green Data Signal (MSB)	
21	B0	I	Blue Data Signal (LSB)	
22	B1	I	Blue Data Signal	
23	B2	I	Blue Data Signal	
24	B3	I	Blue Data Signal	
25	B4	I	Blue Data Signal	
26	B5	I	Blue Data Signal	
27	B6	I	Blue Data Signal	
28	B7	I	Blue Data Signal (MSB)	
29	GND	G	GND	
30	DCLK	I	Pixel clock	
31	DISP	I	Display on/off signal	
32	HSYNC	I	Horizontal synchronizing signal	
33	VSNC	I	Vertical synchronizing signal	

34	DE	I	Data enable	
35	U/D	I	Scan direction selection	
36	NC		NC	
37	GND	G	GND	
38	GND	G	GND	
39	TP_R	I/O	X Right	
40	TP_B	I/O	Y Bottom	
41	TP_L	I/O	X Left	
42	TP_U	I/O	Y Up	
43	SCL	I	3-wire I/F clock input pin	
44	SDA	I	3-wire I/F data input pin	
45	CS	I	3-wire I/F chip select pin	
46	VLED-	PI	LED backlight cathode	
47	VLED+	PI	LED backlight anode	
48	GND	G	GND	
49	GND	G	GND	
50	GND	G	GND	

I: Digital signal input, O: Digital signal output, G: GND, PI: Power input, C: Capacitor

2. Absolute Maximum Ratings

Items	Symbol	Values		Unit	Condition
		Min.	Max.		
Power Voltage	VDD	-0.3	4.5	V	
Input Signal Voltage	V _i	0.8* VDD	VDD	V	
	V _I	GND	0.2* VDD	V	
LED Reverse Voltage	V _r	--	3.5	V	One LED
LED Forward Current	I _f	--	25	mA	One LED

Note 1.If the operating condition exceeds the absolute maximum ratings, the TFT-LCD module may be damaged permanently. Also, if the module operated with the absolute maximum ratings for a long time, its reliability may drop.

3. Electrical Characteristics

The following items are measured under stable condition and suggested application circuit.

a. TFT- LCD Panel

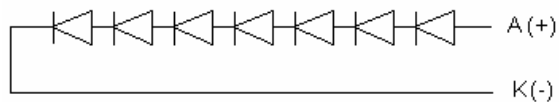
Parameter	Symbol	Min	Typ	Max	Unit	Notes
Power Supply	VDD	3.0		3.6	V	
Frame Frequency	f_{Frame}		60	70	Hz	
Dot Data Clock	DCLK		9.2	TBD	MHz	

Note 1. Panel surface temperature should be kept less than content of section E.2. "Absolute maximum ratings"

b. Backlight Driving Conditions

Parameter	Symbol	Min.	Typ.	Max.	Unit	Remark
LED Supply Current	I_L		20		mA	single serial
LED Supply Voltage	V_L		(22.4)		V	single serial
LED Life Time	L_L	10,000	---	---	Hr	Note 2, 3

Note 1: LED backlight is 7 LEDs serial type.



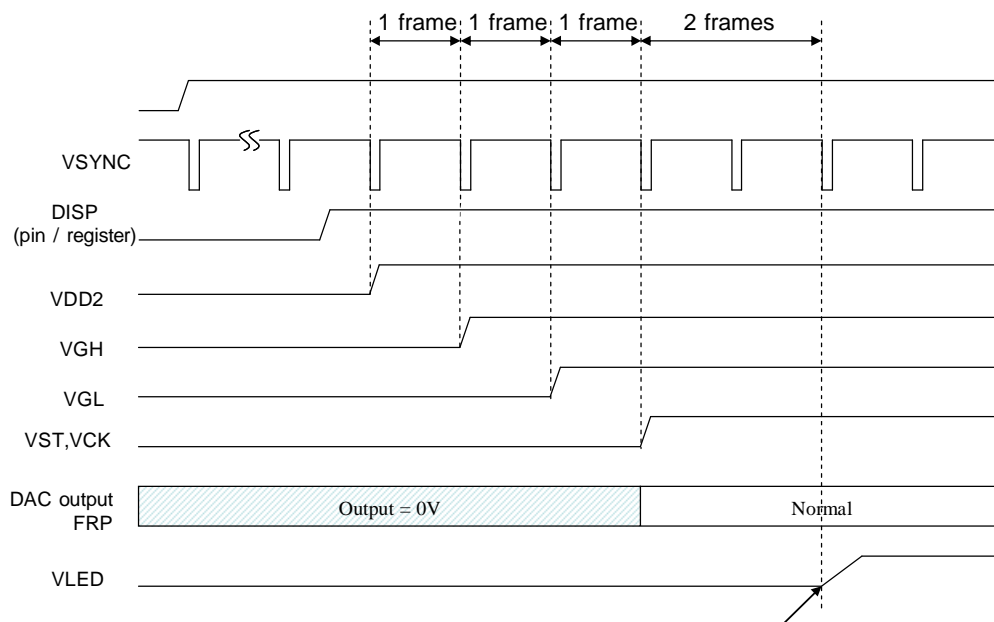
Note 2: The LED lifetime could be decreased if operating I_L is larger than 25mA

4. AC Timing

a. Power on/off sequence

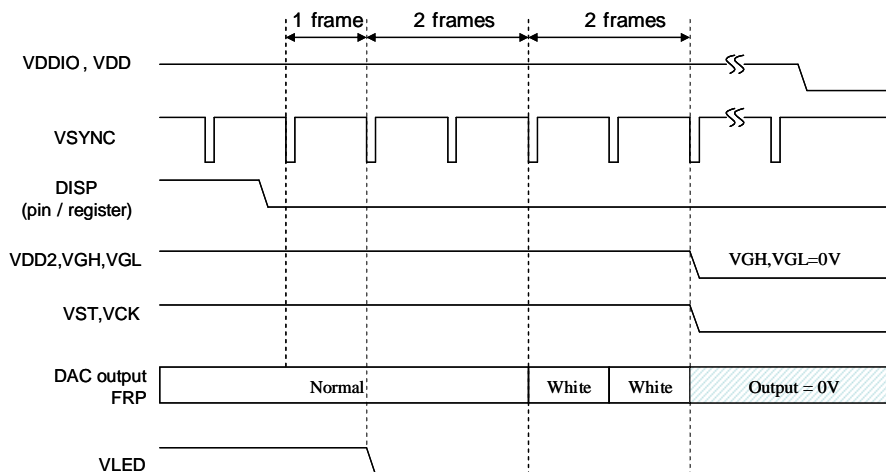
Power On (Display ON; Standby Disabling)

The LCD driver is in default standby mode after VDD/VDDIO power-on, and set the register DISP to high to disable the standby mode is required for normal operation. When the standby mode is disabled, a build-in power on sequence is started. The driver IC analog power VDD2 is turned on first, and then the LCD positive and negative power supplies VGH/VGL are pumped, and followed by the LED power. Since we recommend using external LED driver, the backlight power should be provided at this time. Please refer to power on sequence for the detail timing.



Power-Off (Display Off; Standby Enabling)

When the register DISP is set to low to enable standby mode, a build-in power off sequence is started. Please also refer to the power off sequence for the detail timing.

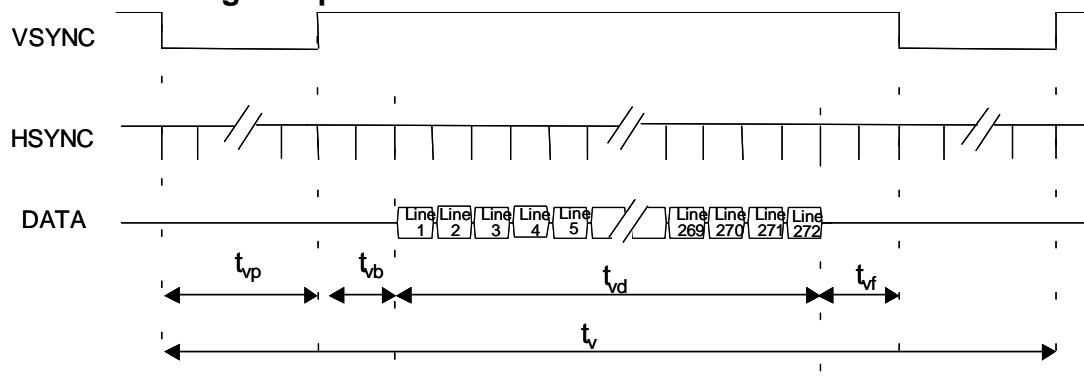


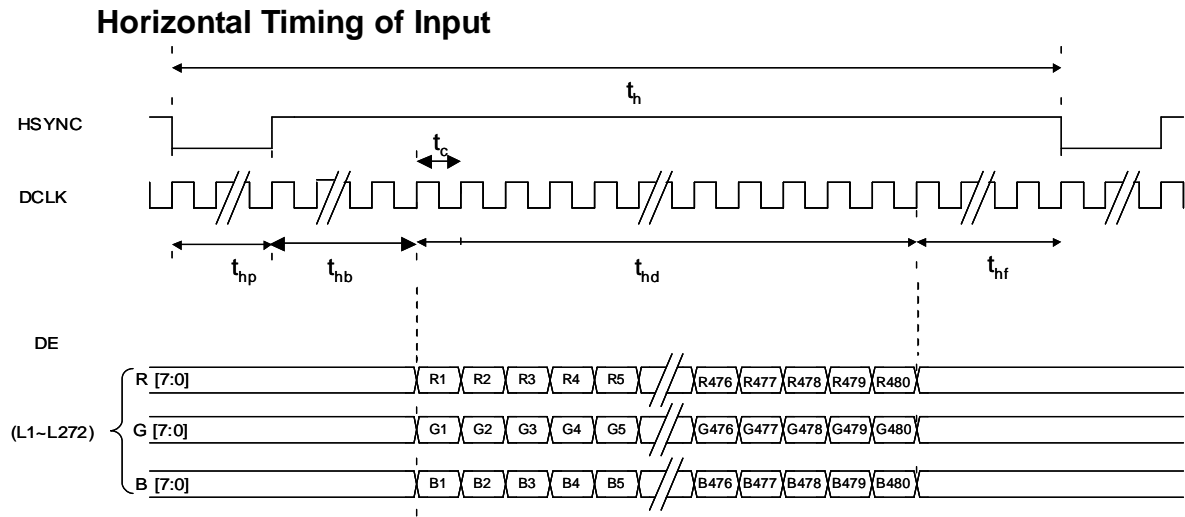
b. Timing Condition

Parameter		Symbol	Min.	Typ.	Max.	Unit.	Remark
Clock	Frequency	1/Tc	--	9.2	10	MHz	
	High Time	TCH	40	--	--	ns	
	Low Time	TCL	40	--	--	ns	
Data	Setup Time	TDS	10	--	--	ns	
	Hold Time	TDH	3	--	--	ns	
DE	Setup Time	TDES	10	--	--	ns	
	Hold Time	TDEH	3	--	--	ns	
Frame Frequency	Cycle	tv		16.7		ms	
1 Frame Scanning Time	Cycle	tv	--	288	--	H	
	Display Period	tvd	272			H	
	Front porch	tvf	2	4		H	
	Pulse width	tvp	1	10		H	
	Back porch	tvb	2	2		H	
1 Line Scanning Time	Cycle	th	490	533	545	DCLK	
	Display Period	thd	480			DCLK	
	Front porch	thf	2	8		DCLK	
	Pulse width	thp	1	41		DCLK	
	Back porch	thb	2	4		DCLK	

c. Timing Diagram

Vertical Timing of Input





5. Command and Register Map

TBD

F. Optical specifications (Note 1, 2)

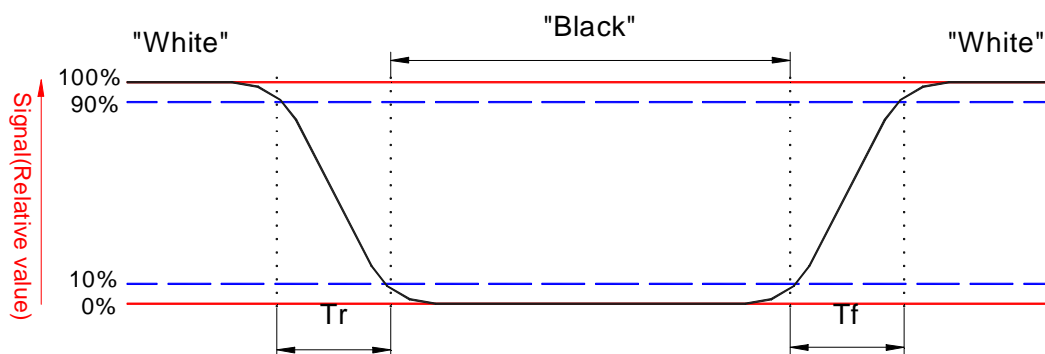
Item	Symbol	Condition	Min.	Typ.	Max.	Unit	Remark
Response Time							
Rise	Tr	$\theta = 0^\circ$	-	15	25	ms	Note 3
Fall	Tf		-	20	30	ms	
Contrast ratio	CR	At optimized viewing angle	200	300	-		Note 5, 6
Viewing Angle							
Top		$CR \geq 10$	30	40	-	deg.	Note 7, 8
Bottom			45	55	-		
Left			50	60	-		
Right			50	60	-		
Brightness	Y _L	$\theta = 0^\circ$		400		cd/m ²	Note 9
White Chromaticity	X	$\theta = 0^\circ$		TBD			
	y	$\theta = 0^\circ$		TBD			

Note 1: Measurement should be performed in the dark room, optical ambient temperature $\approx 25^\circ\text{C}$, and backlight current $I_L = 22\text{ mA}$

Note 2: To be measured on the center area of panel with a field angle of 1° by Topcon luminance meter BM-7, after 10 minutes operation.

Note 3: Definition of response time:

The output signals of photo detector are measured when the input signals are changed from "black" to "white" (falling time) and from "white" to "black" (rising time), respectively.



Note 4. From liquid crystal characteristics, response time will become slower and the color of panel will become darker when ambient temperature is below 25°C .

$$\text{Contrast ratio} = \frac{\text{Photo detector output when LCD is at "White" state}}{\text{Photo detector output when LCD is at "Black" state}}$$

Note 5. Contrast ratio is calculated with the following formula.

Note 6. White $V_i = V_{i50} \pm 1.5V$

Black $V_i = V_{i50} \pm 2.0V$

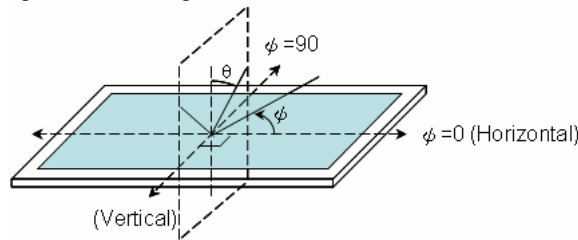
“ \pm ” means that the analog input signal swings in phase with COM signal.

“ \mp ” means that the analog input signal swings out of phase with COM signal.

V_{i50} :The analog input voltage when transmission is 50%

The 100% transmission is defined as the transmission of LCD panel when all the input terminals of module are electrically opened.

Note 7. Definition of viewing angle: refer to figure as below.

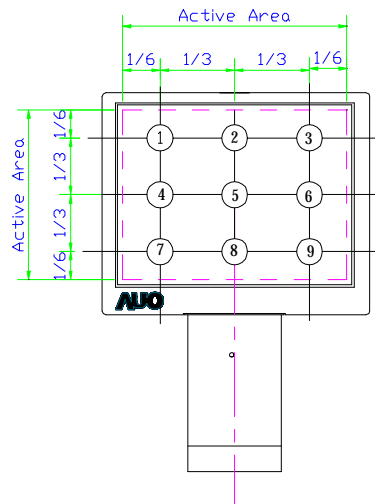


Note 8. The viewing angles are measured at the center area of the panel when all the input terminals of LCD panel are electrically opened.

Note 9. Definition of brightness and luminance uniformity:

Brightness = average brightness of nine points illustrated below

$$\text{Luminance Uniformity} = \frac{\text{Min. Brightness of nine points}}{\text{Max. Brightness of nine points}}$$



G. Reliability Test Items

No.	Test items	Conditions		Remark
1	High Temperature Storage	Ta= 80°C	240Hrs	
2	Low Temperature Storage	Ta= -30°C	240Hrs	
3	High Temperature Operation	Ta= 70°C	240Hrs	
4	Low Temperature Operation	Ta= -20°C	240Hrs	
5	High Temperature & High Humidity	Ta= 60°C . 90% RH	240Hrs	Operation
6	Heat Shock	-25°C ~70°C, 50 cycle, 2Hrs/cycle		Non-operation
7	Electrostatic Discharge	±200V,200pF(0Ω), once for each terminal		Non-operation
8	Vibration (With Carton)	Random vibration: 0.015G ² /Hz from 5~200Hz -6dB/Octave from 200~500Hz		IEC 68-34
9	Drop (With Carton)	Height: 60cm 1 corner, 3 edges, 6 surfaces		

Note 1: Ta: Ambient temperature.

Note 2: In the standard condition, there is not display function NG issue occurred. All the cosmetic specification is judged before the reliability stress.

H. Touch Screen Panel Specifications

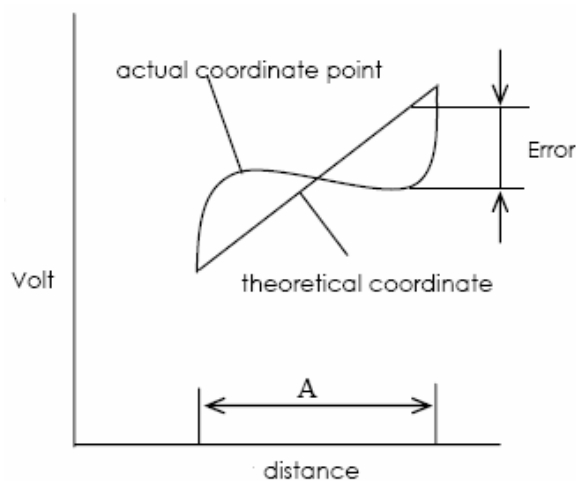
1. FPC Pin Assignment

Pin No.	Symbol
6	X1
7	Y1
8	X2
9	Y2

2. Electrical Characteristics

Item		Min.	Max.	Unit	Remark
Rate DC Voltage		--	7	V	
Resistance	X (Film)	500	1400	Ω	At connector
	Y (Glass)	100	700		
Linearity		1.5%	-1.5%	--	Note 1, test by 250 gf
Chattering				ms	At connector pin
Insulation Resistance		--	20	M Ω	DC 25V

Note 1: Measurement condition of Linearity: difference between actual voltage & theoretical voltage is an error at any points. Linearity is the value max. error voltage divided by voltage difference on active area.



3. Mechanical Characteristics

Item	Min.	Max.	Unit	Remark
Hardness of Surface	3		H	JIS K-5400
Operation Force (Pen or Finger)		80	g	Note 1

Note 1: Within "guaranteed active area", but not on the edge and dot-spacer.

4. Life test Condition

Item	Min.	Max.	Unit	Remark
Notes Life		10 ⁵	times	Note 1, 2
Input Life		10 ⁶	times	Note 1, 3

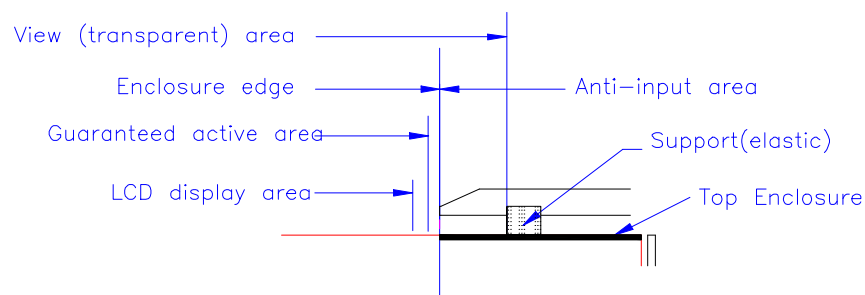
Note 1: Measurement condition of Operation Force: Within "guaranteed active area". Resistance, Insulation resistance, and operation force should be under H.2 & H.3 condition.

5. Attention

Please pay attention for below matters at mounting design of touch panel of LCD module.

1. Do not design enclosure pressing the view area to prevent from miss input.
2. Enclosure support must not touch with view area.
3. Use elastic or non-conductive material to enclosure touch panel.
4. Do not bond film of touch panel with enclosure.
5. The touch panel edge is conductive. Do not touch it with any conductive part after mounting.
6. If user wants to clean touch panel by air gun, pressure 2kg/cm² below is suggested. Not to blow glass from FPC site to prevent FPC peeled off.
7. Do not put a heavy shock or stress on touch panel and film surface. Ex. Don't lift the panel by film face with vacuum.
8. Do not lift LCD module by FPC.
9. Please use dry cloth or soft cloth with neutral detergent (after wring dry) or one with ethanol at cleaning. Do not use any organic solvent, acid or alkali liquor.
10. Do not pile touch panel. Do not put heavy goods on touch panel.

Recommendation of the cushion area:





I. Packing Form
TBD