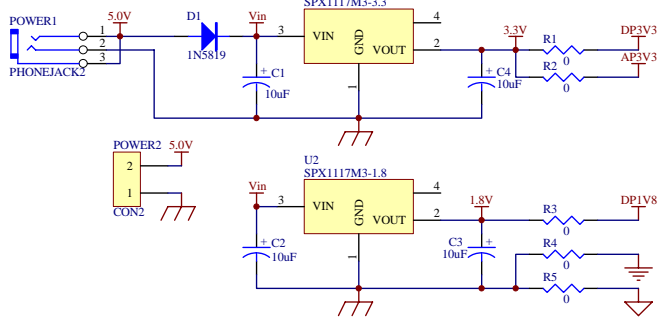
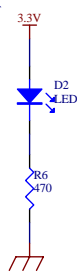


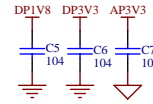
电源电路



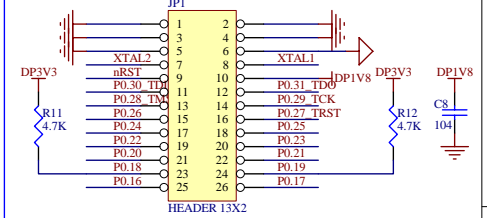
电源指示灯



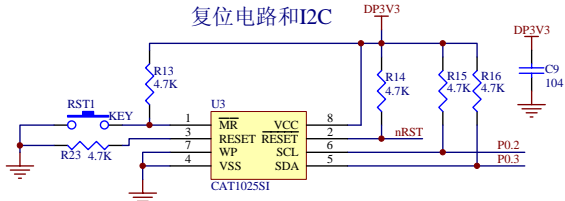
电容滤波



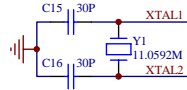
LPC2103 CPU插座



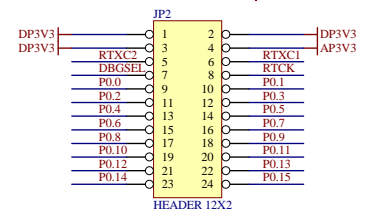
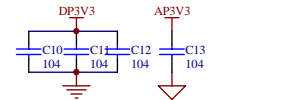
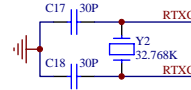
复位电路和I2C



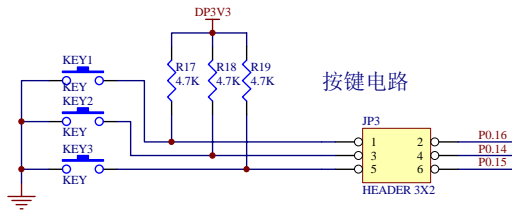
系统时钟晶振



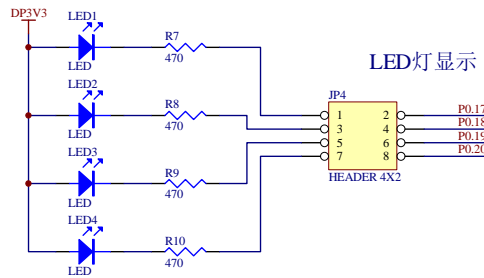
实时时钟晶振



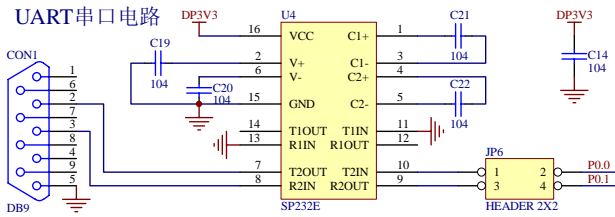
按键电路



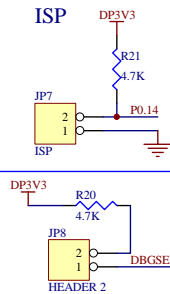
LED灯显示



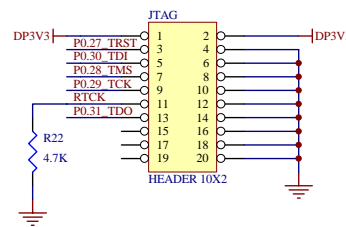
UART串口电路



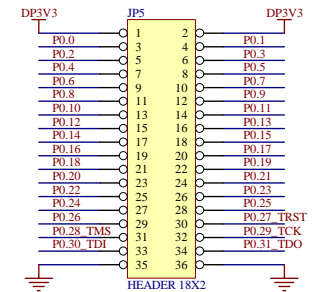
ISP



JTAG调试接口



I/O引脚



Title		
EasyARM2103底板		
Size	Number	Revision
B		
Date:	30-Apr-2008	Sheet of
File:	D:\共享区\zhuhaofu\项目资料\EasyARM2103\设计文档\硬件电路\MyDesign.dtb	