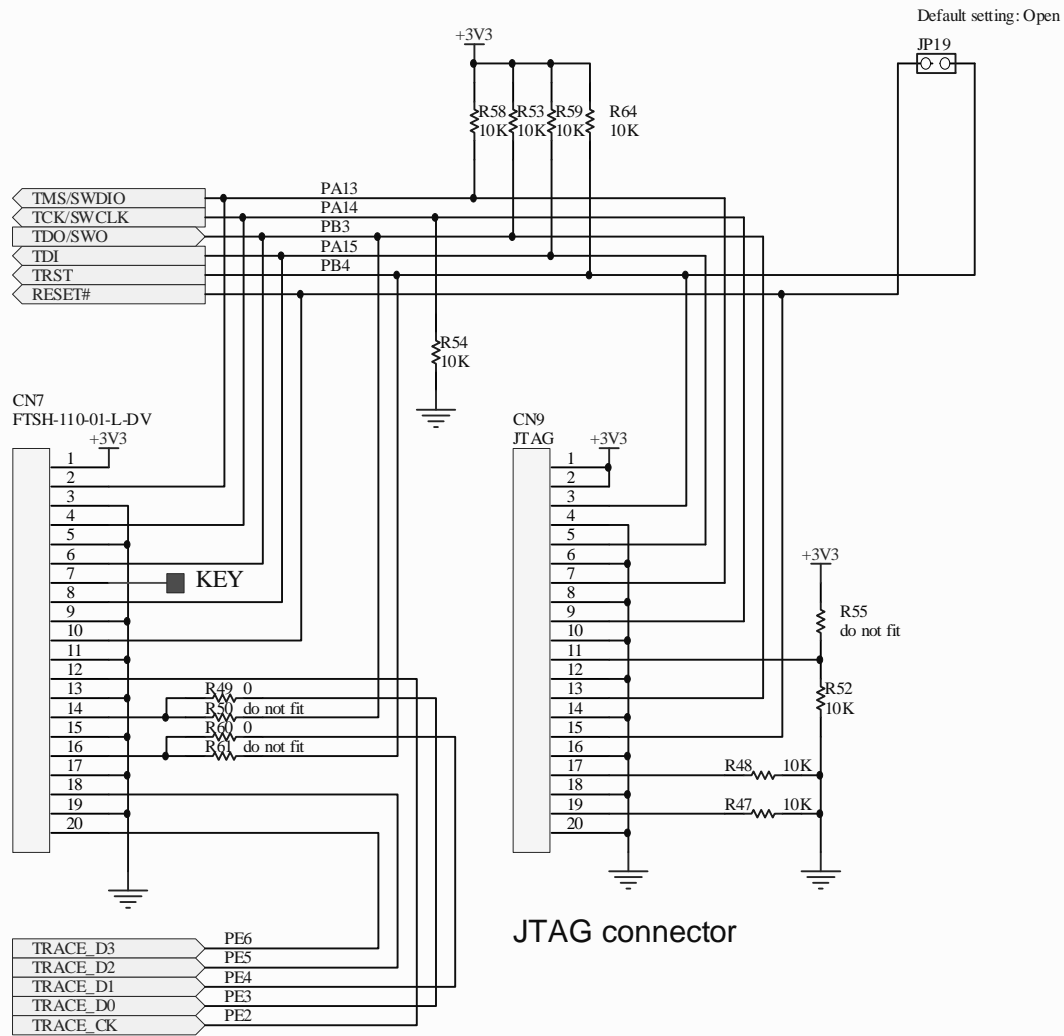


Jumper to select PLL slave clock mode:
 1. 1<->2 reference clock MCKI
 2. 2<->3 reference clock BICK or LRCK

I2C control interface selected (share with temperature sensor) by connecting pin "I2C" to high, the slave address is set to "0010011" by pull up pin "CAD0".

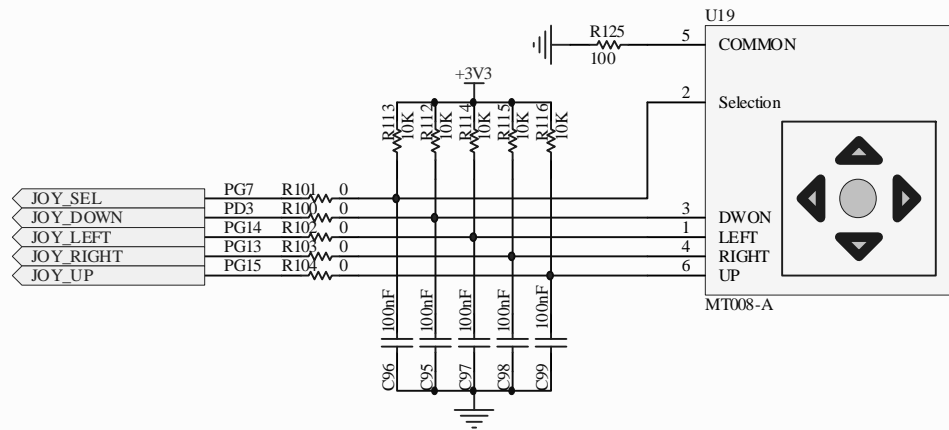
STMicroelectronics			
Title: STM3210E-EVAL Audio			
Number: MB672	Rev: D.1(PCB.SCH)	Date: 4/9/2008	Sheet 5 of 11



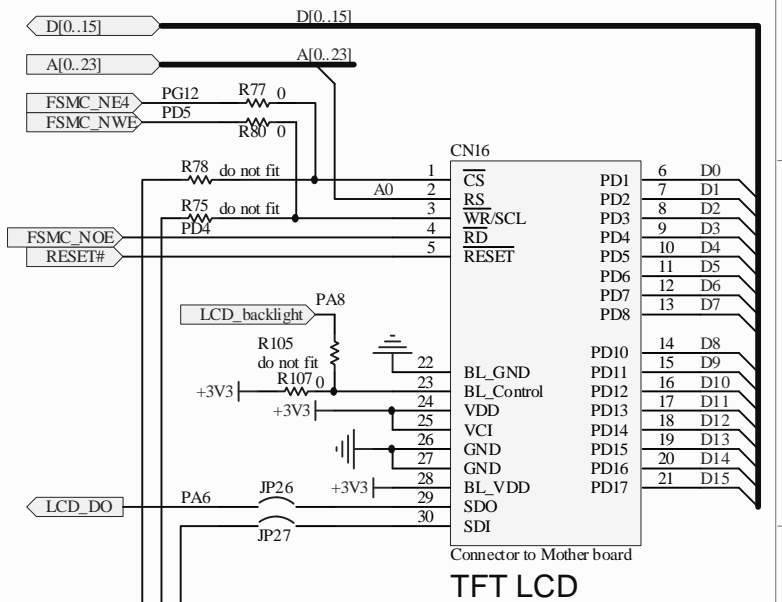
Trace connector

JTAG connector

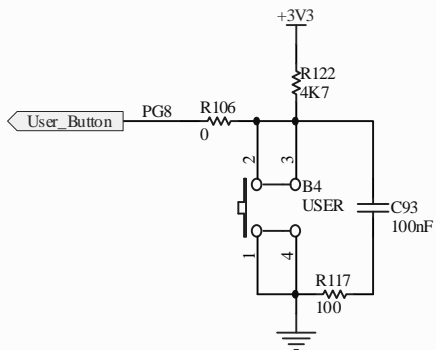
STMicroelectronics			
Title: STM3210E-EVAL JTAG&Trace			
Number: MB672	Rev: D.1(PCB.SCH)	Date: 4/9/2008	Sheet 9 of 11



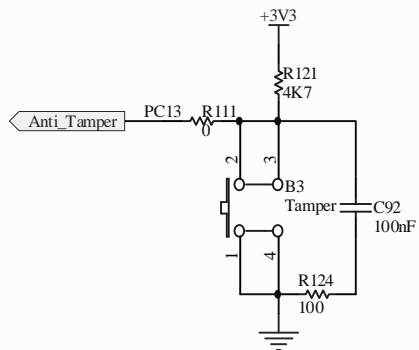
Joystick



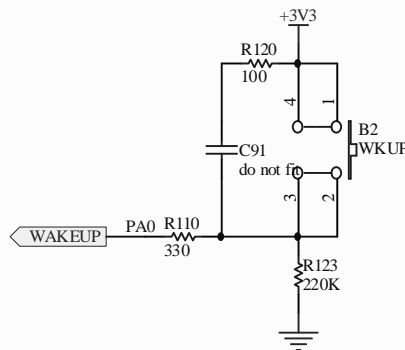
TFT LCD



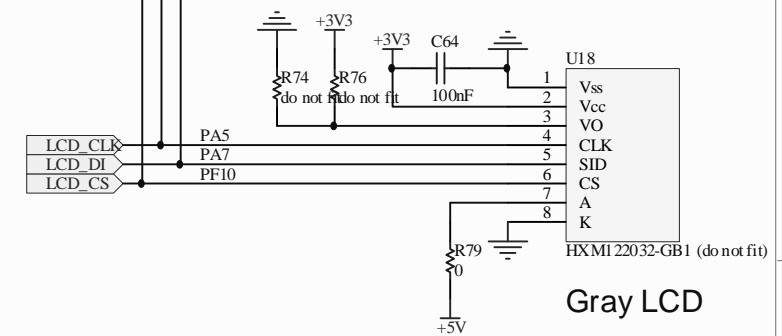
User Button



Tamper Button



Wakeup Button



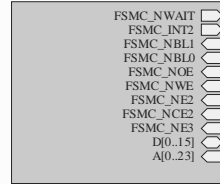
Gray LCD

STMicroelectronics

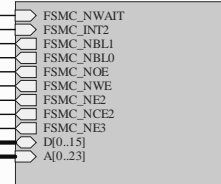
Title: **STM3210E-EVAL LCD&Joystick**

Number: MB525 | Rev: D.1(PCB.SCH) | Date: 4/9/2008 | Sheet 6 of 11

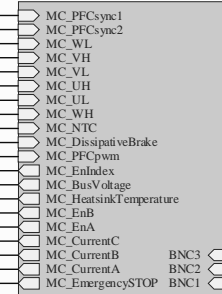
U_SRAM&Flash
SRAM&Flash.SchDoc



U_MCU
MCU.SchDoc

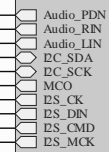
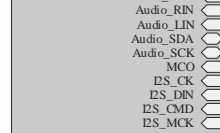


U_MotorCtrl
MotorCtrl.SchDoc

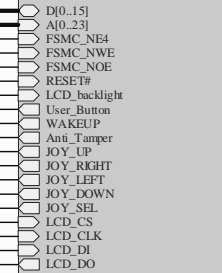


U_Audio

Audio.SchDoc

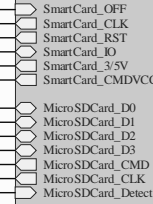
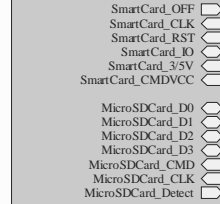


U_LCD&Joystick
LCD&Joystick.SchDoc

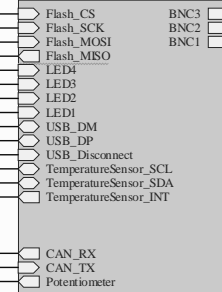


U_SD&Smart Card

SD&Smart Card.SchDoc

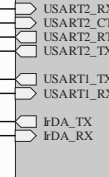
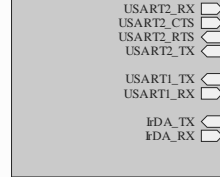


U_Peripherals
Peripherals.SchDoc

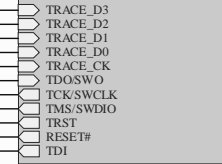


U_RS232&IrDA

RS232&IrDA.SchDoc

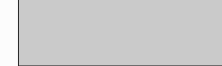


U_ITAG&SWD
ITAG&SWD.SchDoc



U_Power

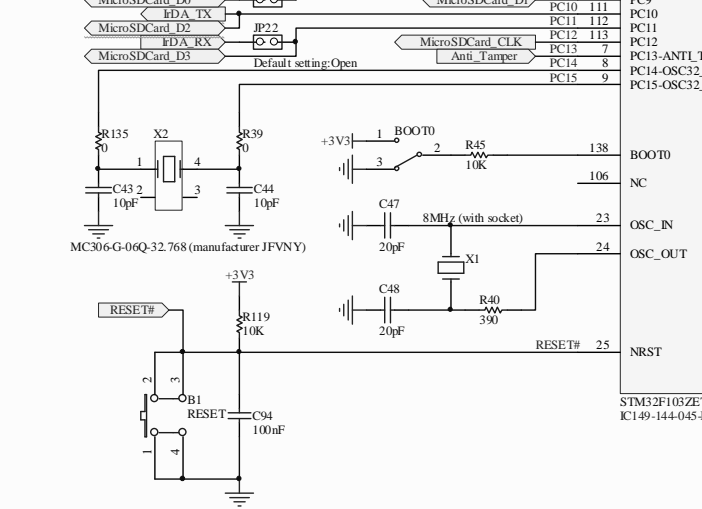
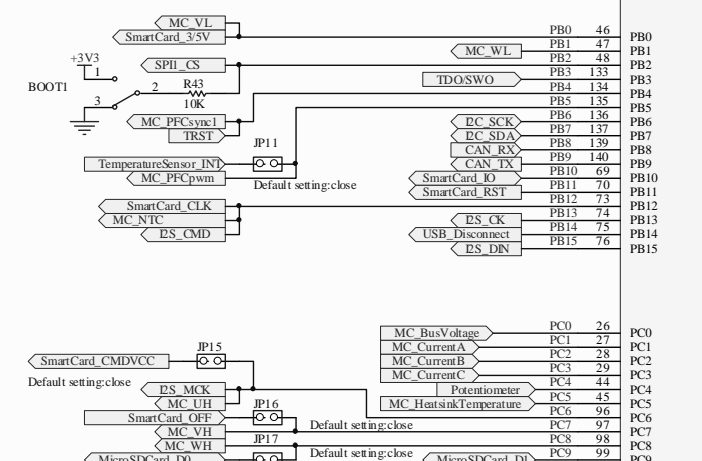
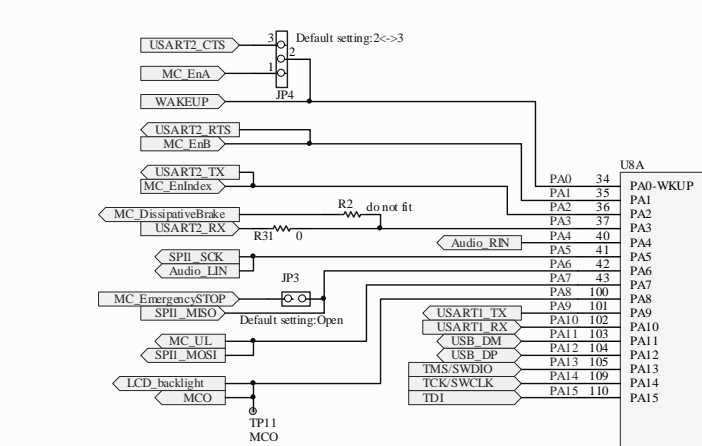
Power.SchDoc



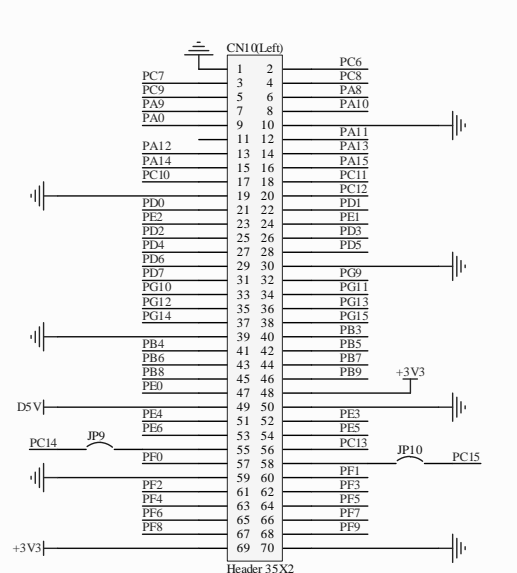
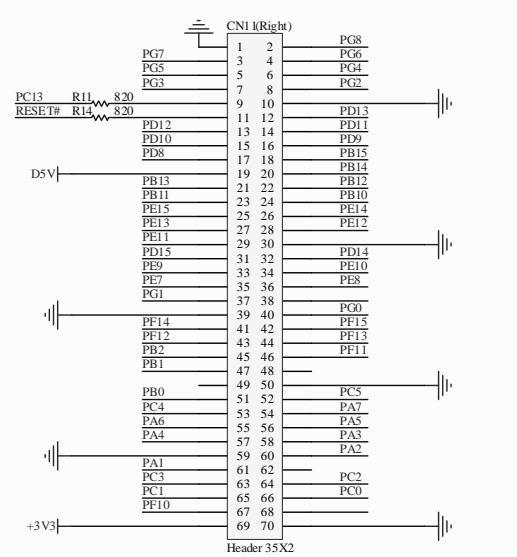
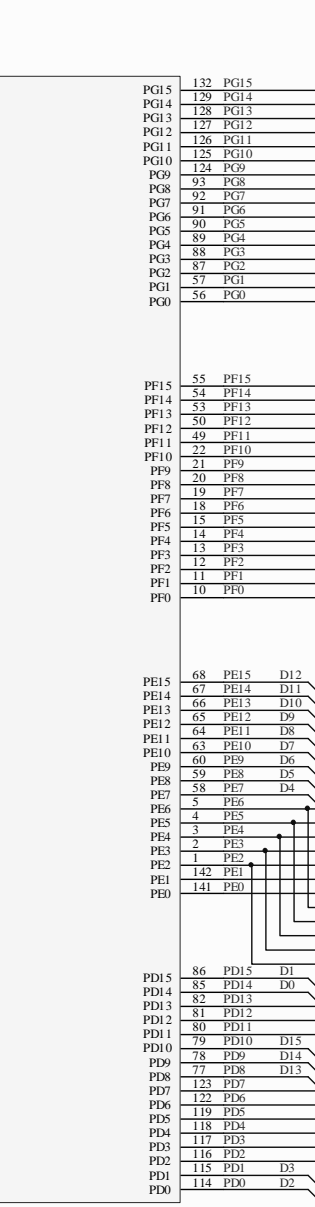
STMicroelectronics

Title: **STM3210E-EVAL**

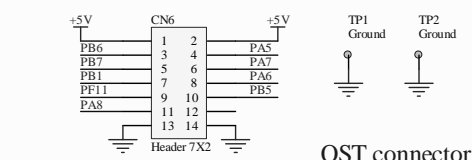
Number MB672 Rev. D.1(PCB.SCH) Date: 4/9/2008 Sheet 1 of 11



STM32F103ZE16
IC149-144-045-B5

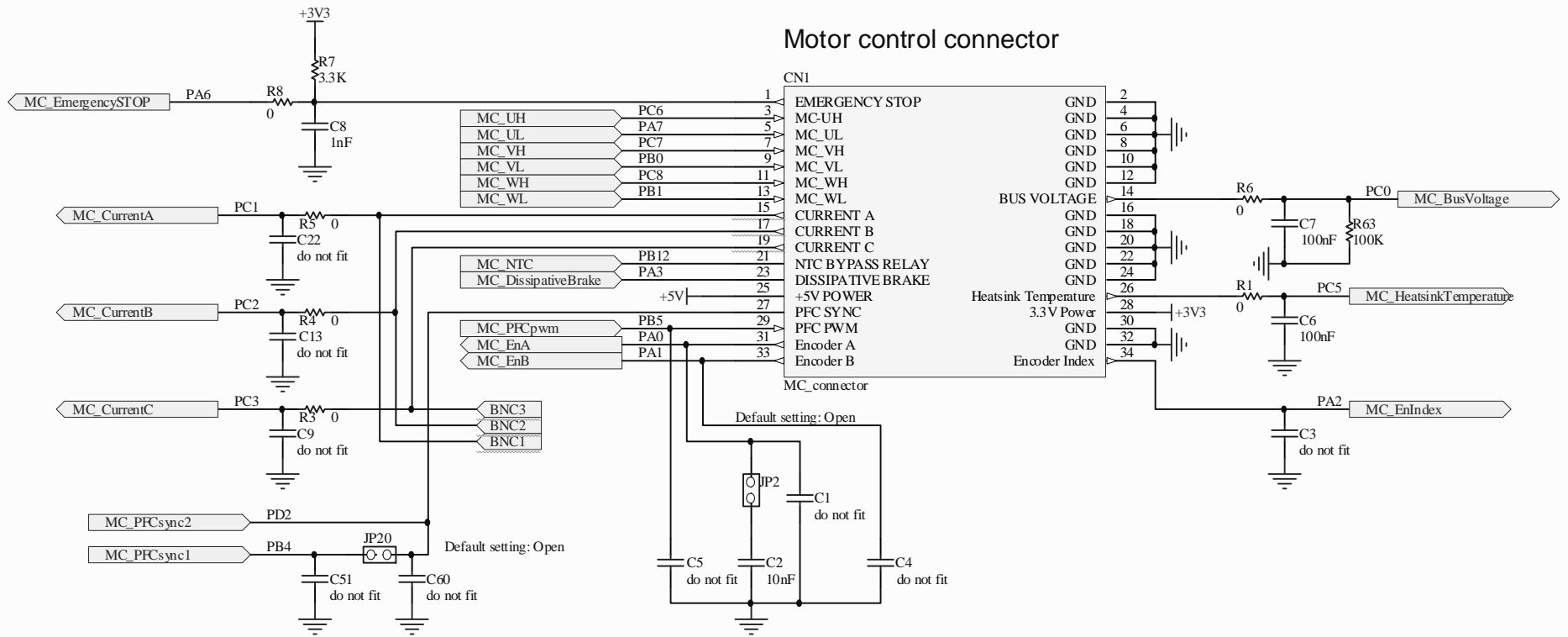


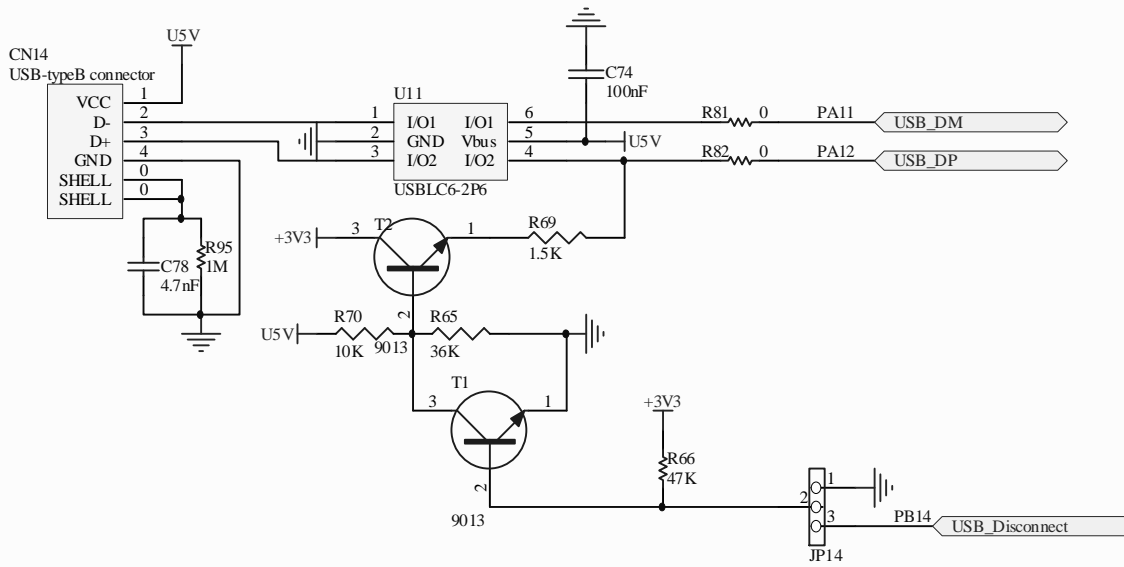
Extension connector



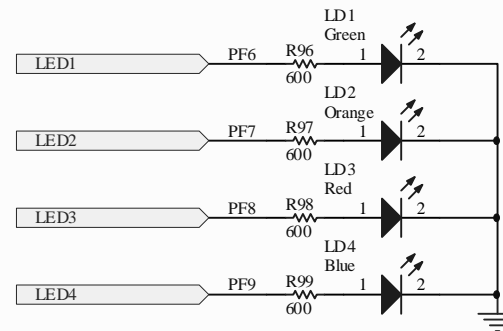
QST connector

MCU

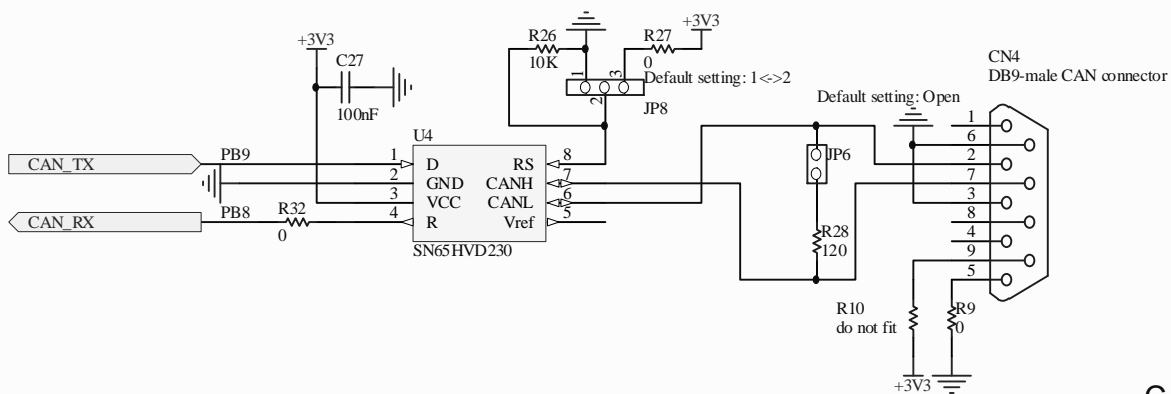




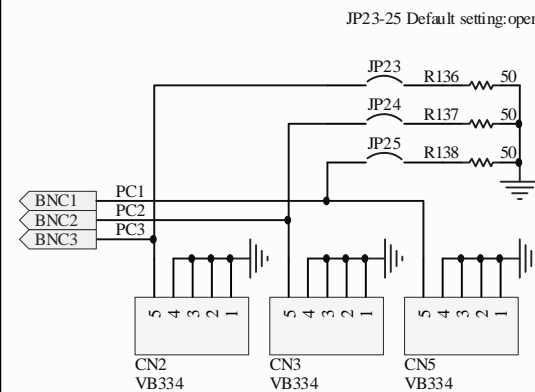
USB



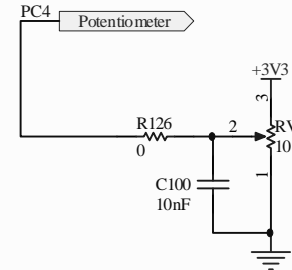
LED



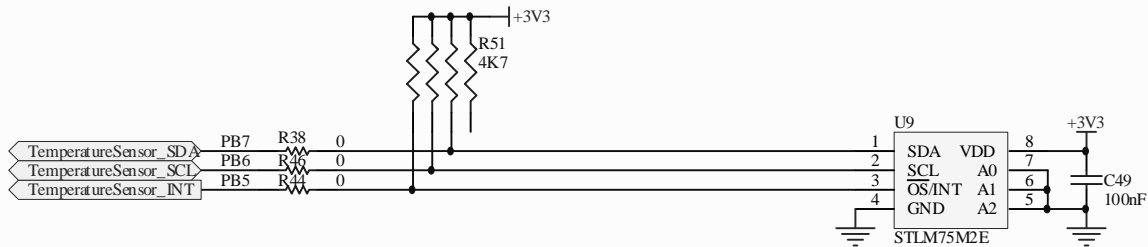
CAN



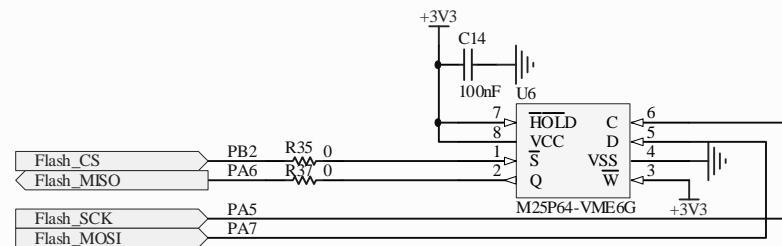
BNC connector



Potentiometer



Temperature sensor

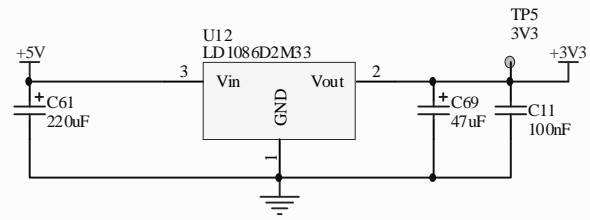
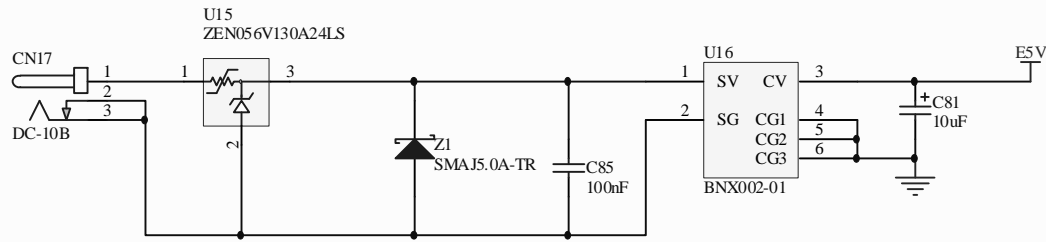


SPI Flash

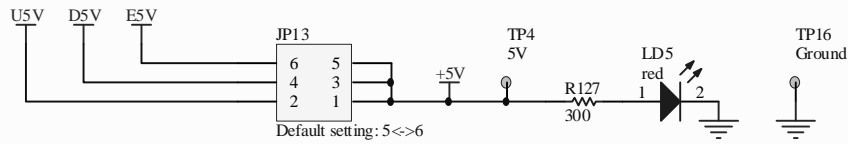
STMicroelectronics

Title: **STM3210E-EVAL Peripherals**

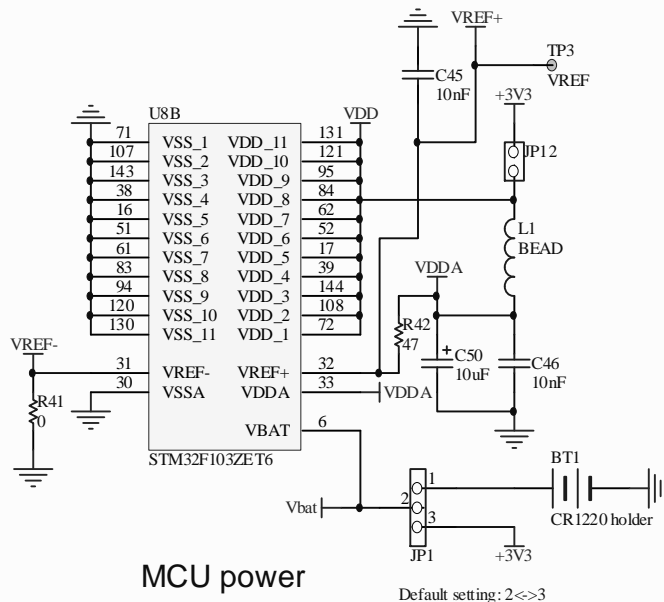
Number:MB525 | Rev: D.1(PCB.SCH) | Date: 4/9/2008 | Sheet 3 of 11



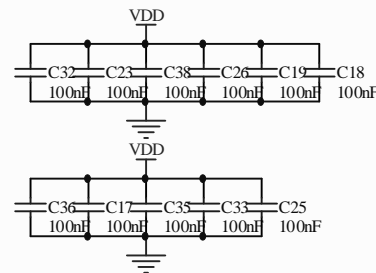
Power regulator



Jumper for choice between power connector, USB connector or daughter board



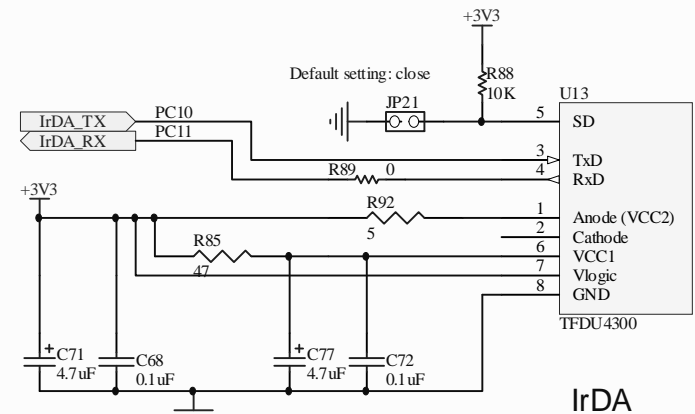
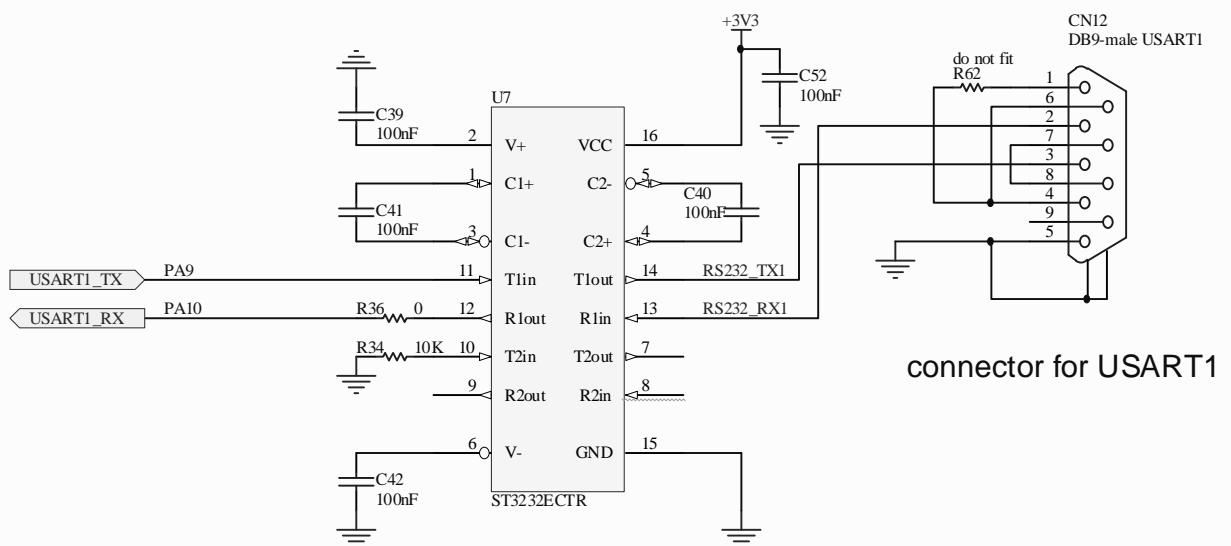
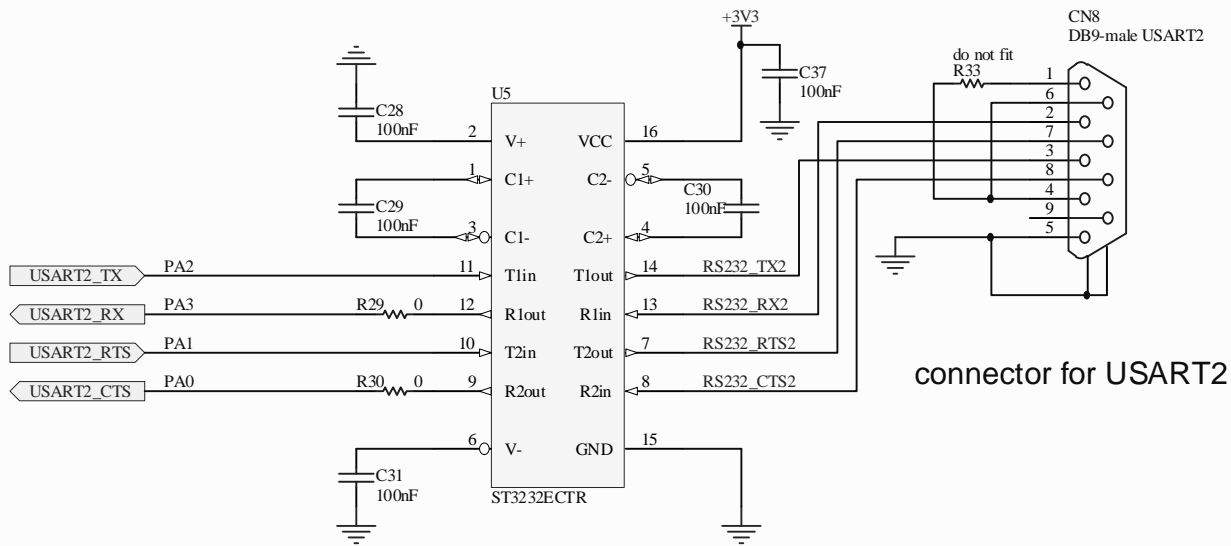
MCU power



STMicroelectronics

Title: **STM3210E-EVAL Power**

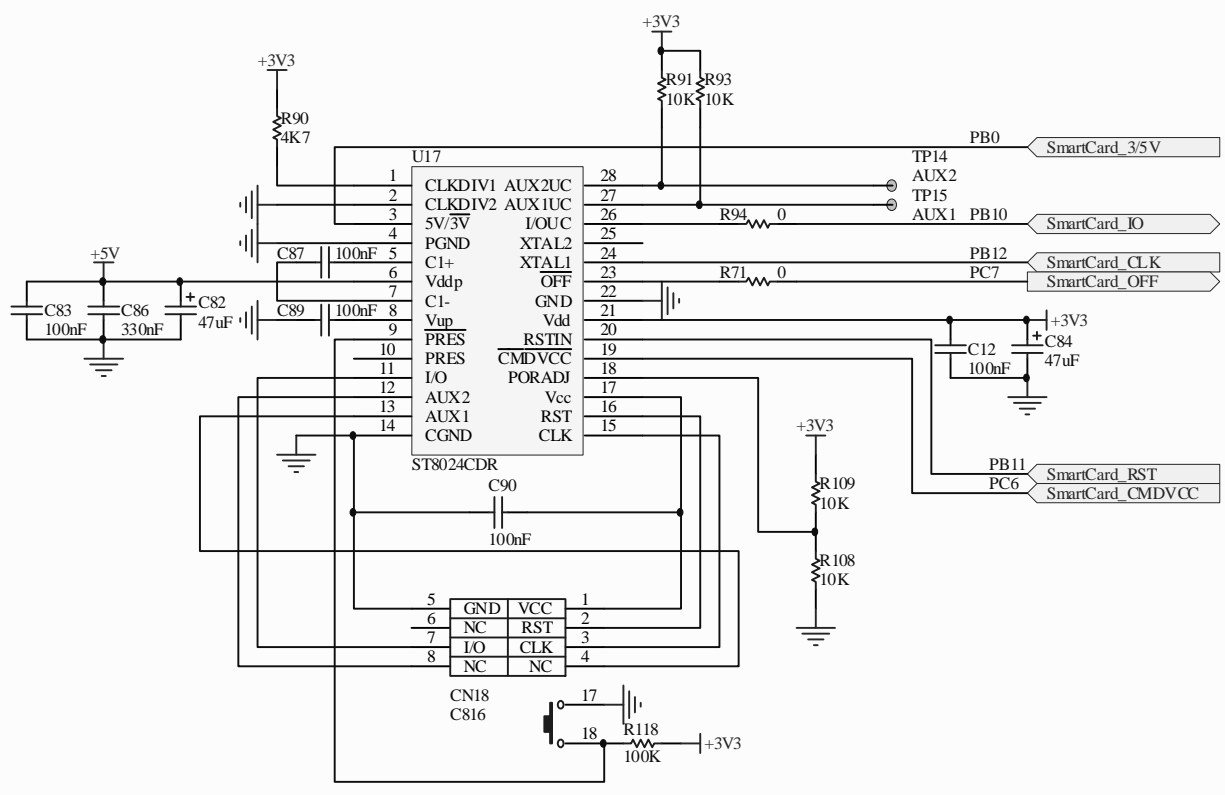
Number:MB672 | Rev: D.1(PCB.SCH) | Date: 4/9/2008 | Sheet10 of 11



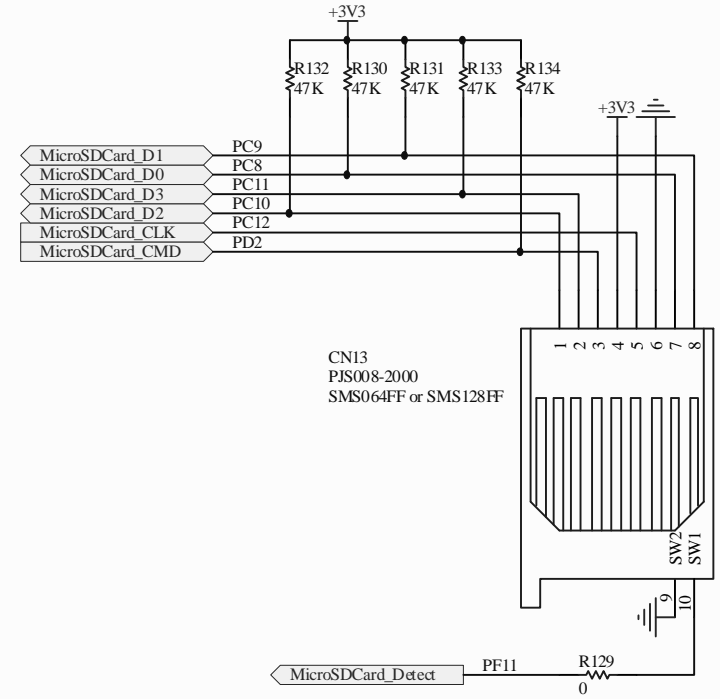
STMicroelectronics

Title: **STM3210E-EVAL RS232&IrDA**

Number: MB672 | Rev: D.1(PCB.SCH) | Date: 4/9/2008 | Sheet 4 of 11



Smart Card



MicroSD card

STMicroelectronics			
Title: STM3210E-EVAL SD&Smart Card			
Number: MB672	Rev: D.1(PCB.SCH)	Date: 4/9/2008	Sheet 7 of 11

A

B

C

D

1

2

3

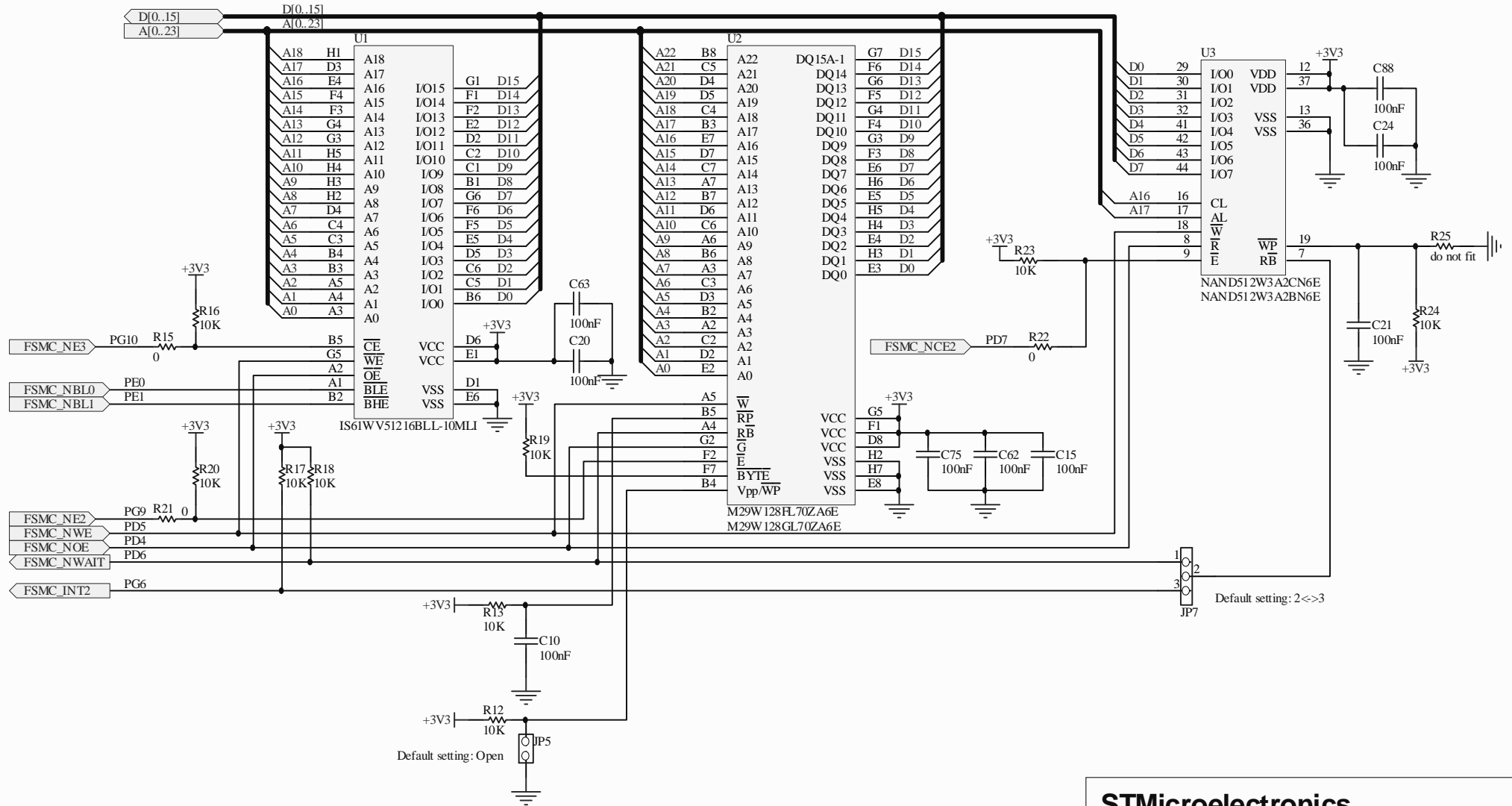
4

A

B

C

D



STMicroelectronics

Title: **STM3210E-EVAL SRAM&FLASH**

Number: MB672 | Rev: D.1(PCB.SCH) | Date: 4/9/2008 | Sheet 11 of 11

1

2

3

4