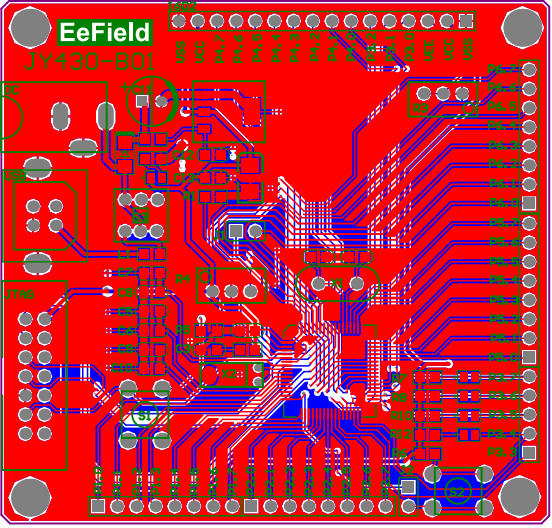


EeField

JY430-B01



Component list

<Parameter Title not found>

Source Data From:

JY430-A01.PrjPcb

Project:

JY430-A01.PrjPcb

Variant:

None



Report Date: 2009-10-25 16:44:27
 Print Date: 25-Oct-09 4:44:33 PM

#	Designator	LibRef	Column Name Error:Manufa	Description	Footprint	#Column Name Error:Library Name	Comment	Quantity
1	C1, C2	CAP		Capacitor	c0805		33pf	2
2	C3, C4, C5, C7, C9, C12, C13	CAP		Capacitor	c0805		104C	7
3	C6, C8, C10	CAP		Capacitor	c0805		106C	3
4	C11	ELECTRO1		电解电容	EC65		220u/35V	1
5	C14	ELECTRO1		电解电容	CB		10u	1
6	D1	DIODE		二极管	1N4148		1N4148	1
7	D2, D3, D4, D5, D6	LED2		Typical RED, GREEN, YELLOW, AMBER G LED	0805-LED		LED2	6
8	DC	Header 3		Header, 3-Pin	POWER1		POWER	1
9	J1, J2	Header 2		Header, 2-Pin	HDR1X2		Header 2	2
10	JP1	Header 16		Header, 16-Pin	HDR1X16		1602接口	1
11	L1	Inductor Iron		Magnetic-Core Inductor	R0805		Inductor Iron	1
12	P2	Header 7X2		Header, 7-Pin, Dual row	jtag		Header 7X2	1
13	P6, P7, P8, P9	Header 8		Header, 8-Pin	HDR1X8		Header 8	4
14	P10	Header 5		Header, 5-Pin	HDR1X5		Header 5	1
15	R1	RES2			R0805		0R	1
16	R2	RES2			R0805		105R	1
17	R3, R4	POT2		Potentiometer	3296		103R	2
18	R5	RES2			R0805		102R	1
19	R6	RES2			R0805		512R	1
20	R7, R8, R10, R11, R12	RES2			R0805		331R	6
21	R9	RES2		电阻器	R0805		101R	1
22	S1, S2	SW-PB		Switch	SW1		SW-PB	2
23	S3	SW-PB		Switch	SW3		SW-PB	1
24	U2	Component_1			SOT-223		A1117-3.3	1
25	U101	MSP430F149			SQFP64		MSP430F149	1
26	USB	Header 4		Header, 4-Pin	USB2		USB	1
27	X1	XTAL		Crystal Oscillator	XTAL1		XTAL	1
28	X2	CRYSTAL		晶振	XTAL3		32768Hz	1

Approved	Notes	51
----------	-------	----