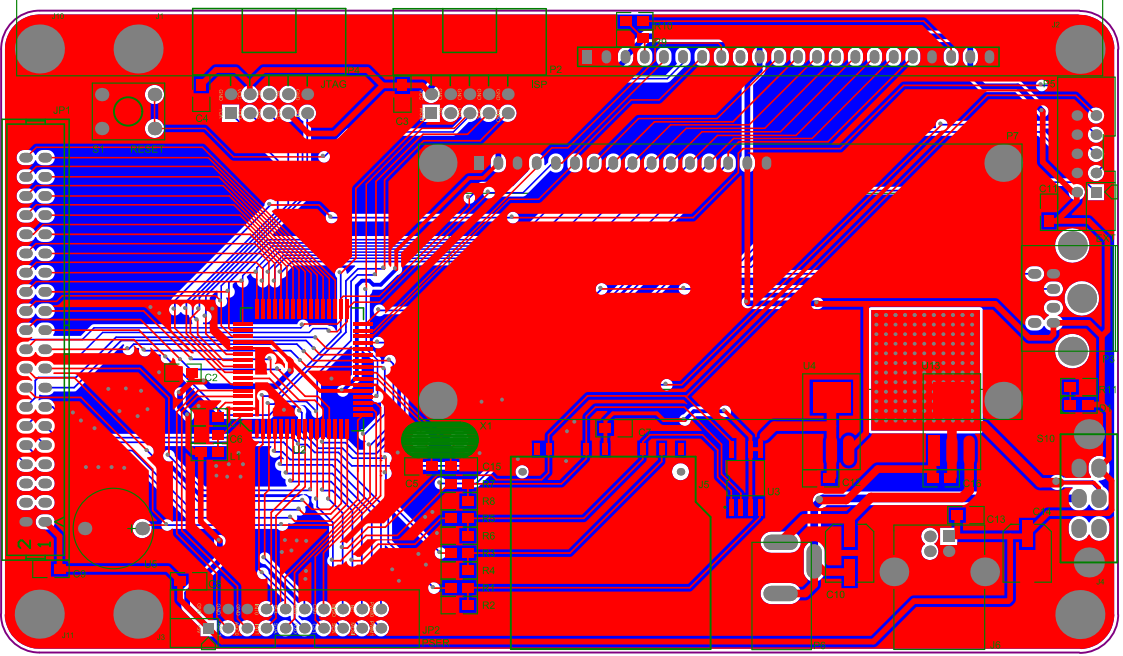
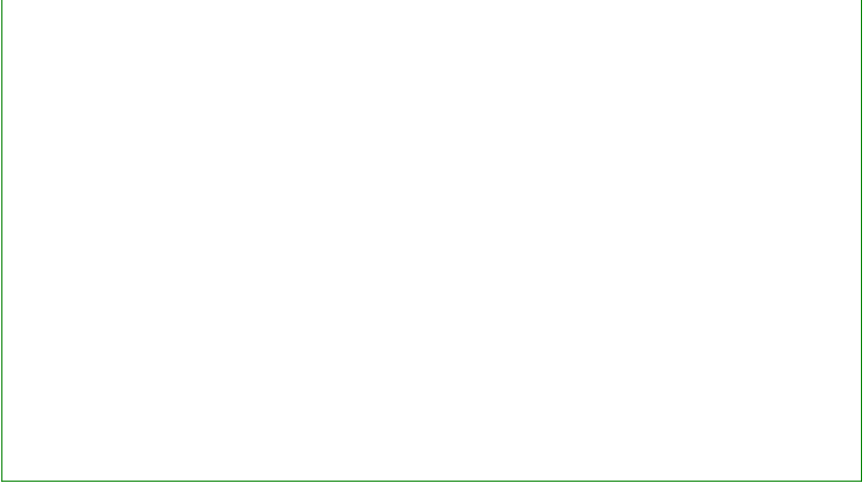


Size	Number	Revision
A4		
Date:	2009-5-24	Sheet of
File:	F:\	\.dep_rfid_ml28.Schema



Comment	Description	Designator	Footprint	LibRef	Quantity
104	CAP	C1, C2, C3, C4, C6, C7, C16	0805	CAP	7
30P	CAP	C5, C15	0805	CAP	2
0.1uF	CAP	C8, C9, C11, C12, C13	0805	CAP	5
100uF/16V	Polarized Capacitor (Radial)	C10	CTP	Cap Pol1	1
Cap Pol1	Polarized Capacitor (Radial)	C14	CTP	Cap Pol1	1
RED		D1	LED-0805R	LED	1
FREE		J1, J2, J3, J4, J10, J11	PAD_8	PAD_8	6
SD-JACK		J5	SD-JACK	SD-JACK	1
USB_JACK		J6	USBS	USB_JACK	1
GPIO32		JP1	FKV40SN	HEADER 20X2	1
PSER		JP2	PSER	PSER	1
150uH		L1	0805	INDUCTOR2	1
LCM240128	Header, 22-Pin	P1	LCD240128	LCM240128	1
ISP	Header, 5-Pin, Dual row	P2	ISPH	ISP	1
PS2		P3	PS2	PS2	1
JTAG	Header, 5-Pin, Dual row	P4	JTAGH	JTAG	1
EXT	Header, 5-Pin, Dual row	P5	IDC10A	ISP	1
直流插座		P6	DC_SITE	DC_SITE	1
1602液晶接口		P7	LCD1602-FULL	1602	1
220		R1, R3, R5, R7	0805	RES2	4
560		R2, R4, R6, R8	0805	RES2	4
4K7		R9, R10	0805	RES2	2
330		R11	0805	RES2	1
RESET	Switch	S1	KEY	SW-PB	1
POEWER	Switch	S10	SS-22F06	SW DPDT2	1
ATMEGA128	Atmel Microcontroller - Library created by carel.. <www.mpfreezone.com>	U2	TQFP64	ATMEGA128	1
AT45DB161B		U3	SOJ-8	AT45DB161B	1
1117-3V3	Header, 3-Pin	U4	1117	1117	1
BUZZER		U5	BUZZLE	BUZZLE	1
1117-5V	Header, 3-Pin	U13	1117	1117	1
16M		X1	CRYSTAL2	CRYSTAL	1