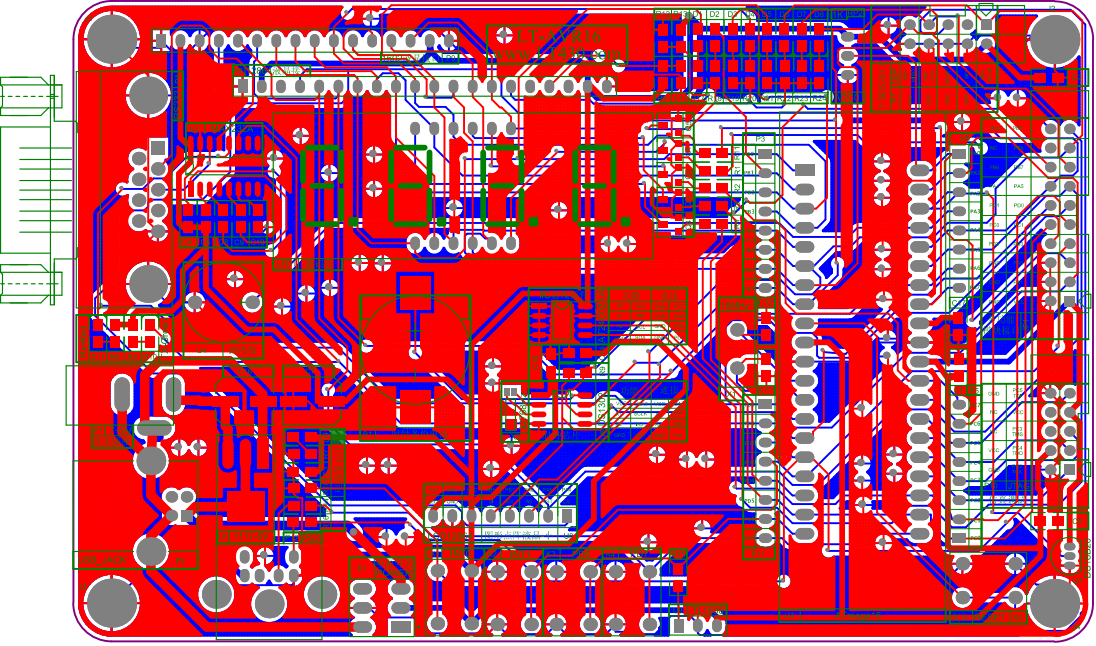


| Title | | |
|-------|-------------------------|-----------|
| Size | Number | Revision |
| A3 | | |
| Date: | 2009-5-12 | Sheet of |
| File: | FA\...\lt_mini_m16 v2.2 | Drawn By: |



| Comment | Description | Designator | Footprint | LibRef | Quantity | Value |
|-----------|------------------------------|--|------------|-------------|----------|------------------|
| BATTERY | | B1 | Battery | BATTERY | 1 | |
| 104 | CAP | C1, C2, C3, C4, C5, C6, C8, C9, C10, C13, C14, C15, C17 | 0805 | CAP | 13 | |
| 100uF/16V | Polarized Capacitor (Radial) | C7, C16 | CTP | Cap Pol1 | 2 | 100uF, 100uF/16V |
| 22pF | CAP | C11, C12 | 0805 | CAP | 2 | |
| Red | | D1, D2, D3, D4, D5, D6, D7, D8, D9 | LED-0805 | LED | 9 | |
| TX-Green | | D10 | LED-0805 | LED | 1 | |
| Rx-Red | | D11 | LED-0805 | LED | 1 | |
| FREE | | J1, J2, J3, J4 | PAD_8 | PAD_8 | 4 | |
| P5ER | | JP1 | P5ER | P5ER | 1 | |
| INT0 | | K1 | KEY | KEY | 1 | |
| INT1 | | K2 | KEY | KEY | 1 | |
| PD6 | | K3 | KEY | KEY | 1 | |
| PD7 | | K4 | KEY | KEY | 1 | |
| RESET | | K5 | KEY | KEY | 1 | |
| SEG.5_4 | | LED1 | SEG.5_4 | SEG.5_4 | 1 | |
| 直流插座 | | P1 | DC_SITE | DC_SITE | 1 | |
| USB_JACK | | P2 | USBS | USB_JACK | 1 | |
| PB | Header, 8-Pin | P3 | HDR1X8 | Header 8 | 1 | |
| RS232 | | P4 | DB9F | DB9 | 1 | |
| PA | Header, 8-Pin | P5 | HDR1X8 | Header 8 | 1 | |
| PC | Header, 8-Pin | P6 | HDR1X8 | Header 8 | 1 | |
| ISP | Header, 5-Pin, Dual row | P7 | ISP | ISP | 1 | |
| 12864液晶接口 | | P8 | HDR1X20 | 12864 | 1 | |
| 1602液晶接口 | | P9 | lcd1602 | 1602 | 1 | |
| JTAG | Header, 5-Pin, Dual row | P10 | jtag | JTAG | 1 | |
| PD | Header, 8-Pin | P11 | HDR1X8 | Header 8 | 1 | |
| PS2 | | P12 | PS2 | PS2 | 1 | |
| 9013 | NPN Bipolar Transistor | Q1, Q2, Q3, Q4, Q5 | SOT-23 | NPN_S | 5 | |
| 1K | | R1, R2, R3, R4, R5, R6, R7, R9, R11, R14, R15, R16, R17, R18, R19, R20, R21, R22, R23, R24 | 0805 | RES2 | 20 | |
| 10K | | R8, R10, R12 | 0805 | RES2 | 3 | |
| 000 | | R13 | 0805 | RES2 | 1 | |
| 1K | | RP2 | RES3 | RES3 | 1 | |
| POWER | Switch | S1 | DPDT-6 | SW DPDT | 1 | |
| 1117-5V | Header, 3-Pin | U1 | 1117 | 1117 | 1 | |
| MAX232A | MAX3232 | U2 | SOP16 | MAX3232 | 1 | |
| ATmega16 | | U3 | DIP40_SJ | ATmega16 | 1 | |
| BUZZER | | U4 | BUZZLE | BUZZLE | 1 | |
| AT24C02 | | U5 | SOP8 | 24C0X | 1 | |
| DS1302 | | U6 | SOP8 | DS1302 | 1 | |
| DS18B20 | | U7 | TO-92B | DS18B20 | 1 | |
| LCD12864 | Header, 8-Pin | U8 | SO12864FPD | LCD12864-12 | 1 | |
| TL1838 | Header, 8-Pin | U9 | TL1838 | TL1838 | 1 | |
| 16MHz | | X1 | CRYSTAL2 | CRYSTAL | 1 | |
| 32768Hz | | X2 | XTAL3 | CRYSTAL | 1 | |