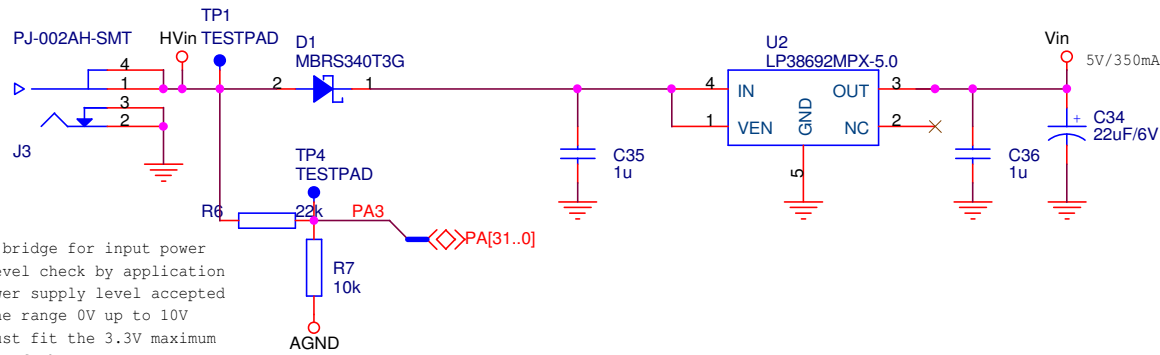


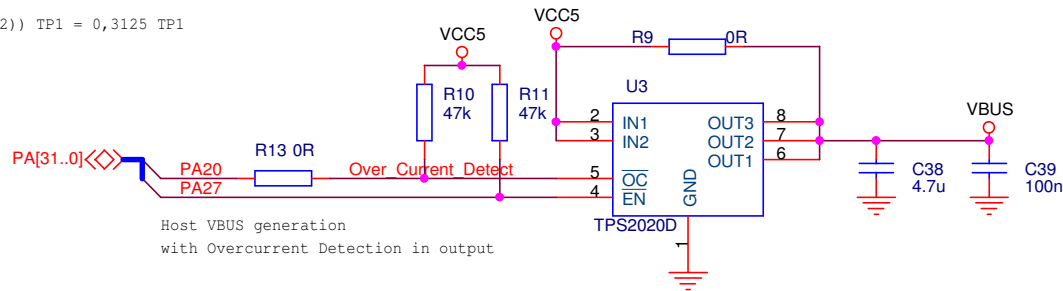
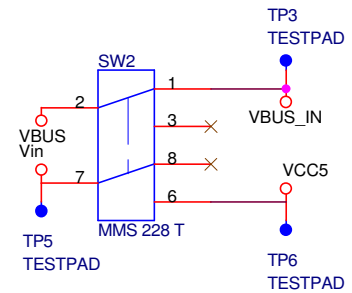
<Core Design>

ATMEL Nantes SA La Chantrerie BP 70602 44306 Nantes Cedex 3 FRANCE		
Title	ATEVK1101	
Size	Document Number	Rev
A4	CPU	
Date:	Monday, April 02, 2007	Sheet 1 of 7

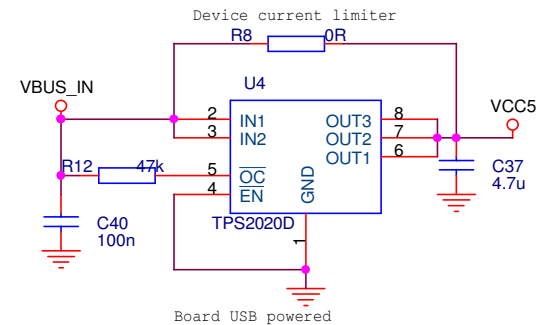


Resistor bridge for input power supply level check by application
 Input power supply level accepted are in the range 0V up to 10V
 Levels must fit the 3.3V maximum reference of the ADC

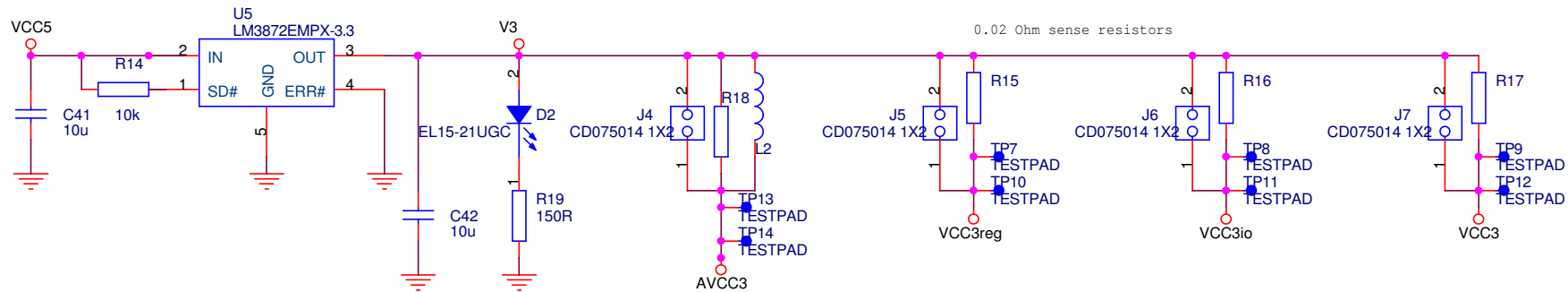
$TP4 = (10 / (10 + 22))$ $TP1 = 0,3125$ $TP1$



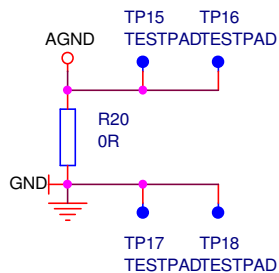
Host VBUS generation with Overcurrent Detection in output



Board USB powered



0.02 Ohm sense resistors



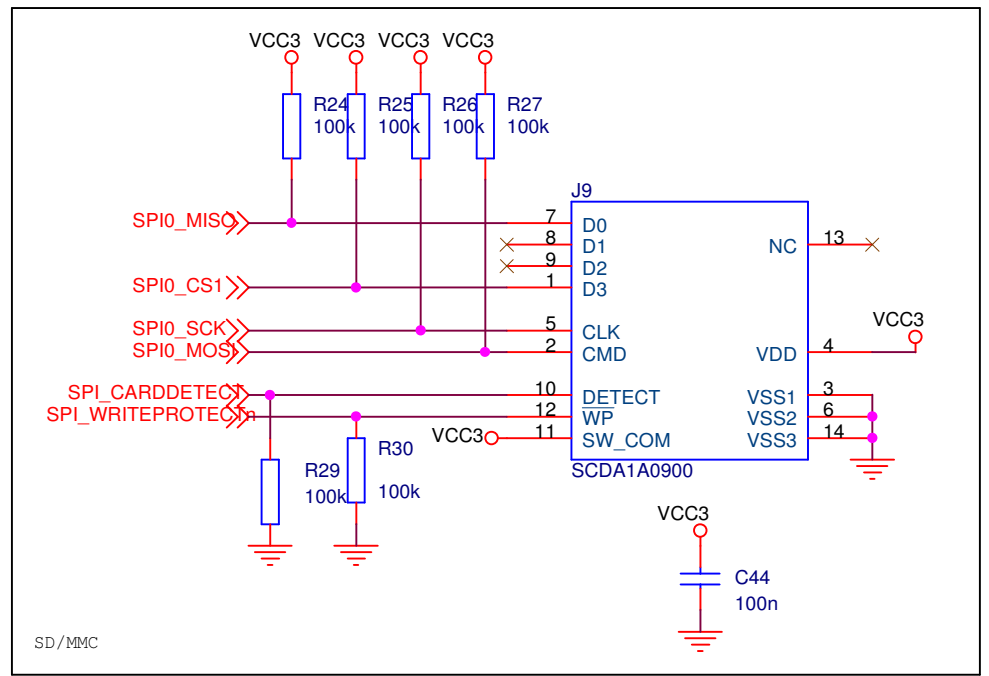
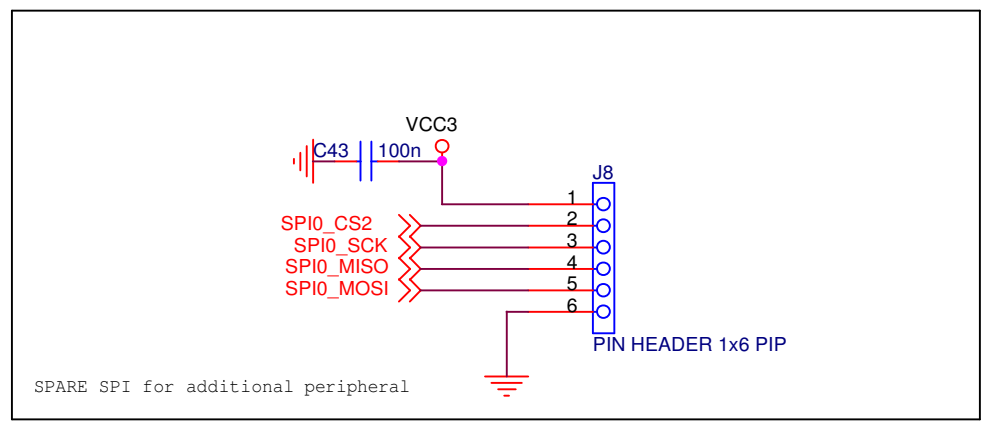
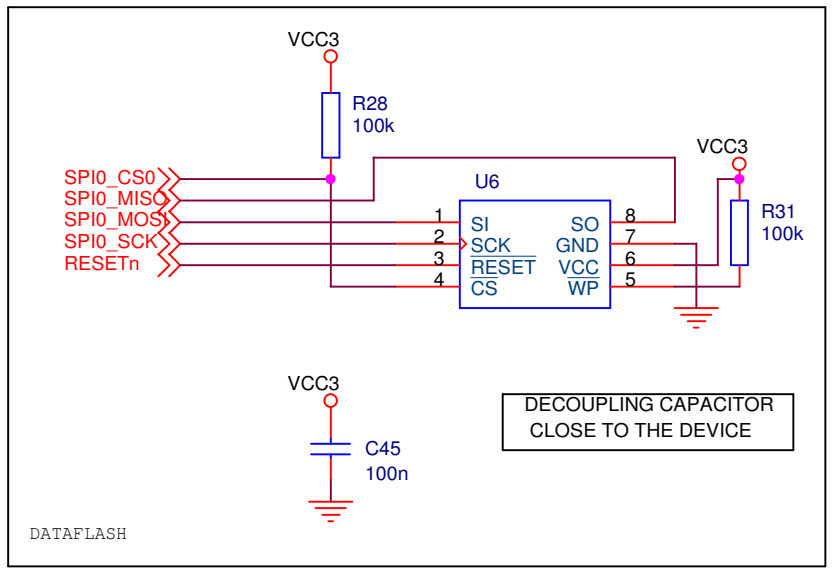
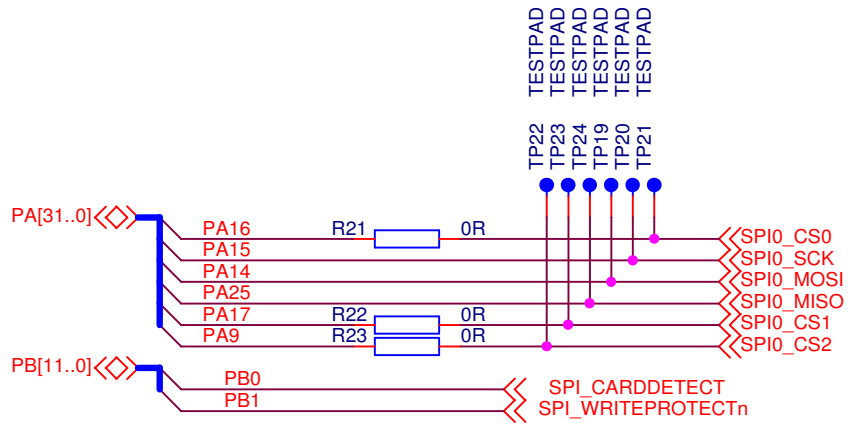
AVCC3 intends to provide a clean 3.3V power supply for analog blocks
 VCC3io intends to provide a clean 3.3V power supply for MCU buffers
 VCC3reg intends to provide a clean 3.3V power supply for MCU internal regulator
 VCC3 intends to provide a clean 3.3V power supply for peripherals

<Version Design>

ATMEL Nantes SA
 La Chantrerie BP 70602
 44306 Nantes Cedex 3
 FRANCE

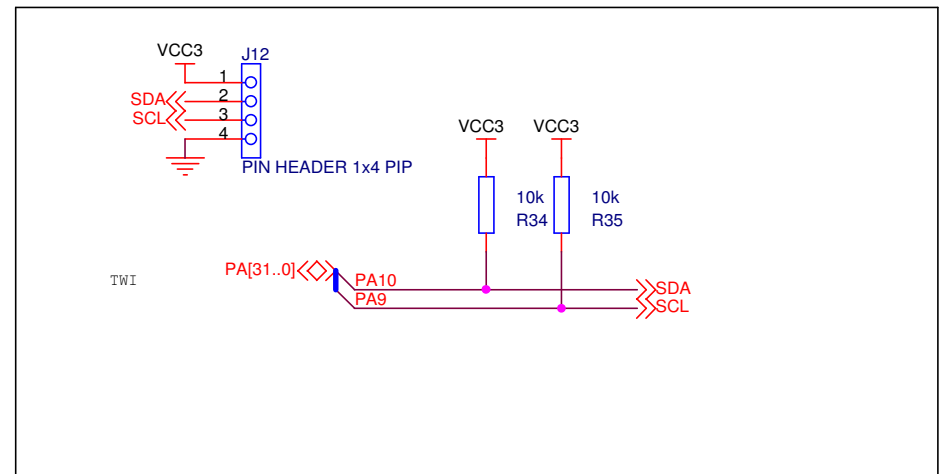
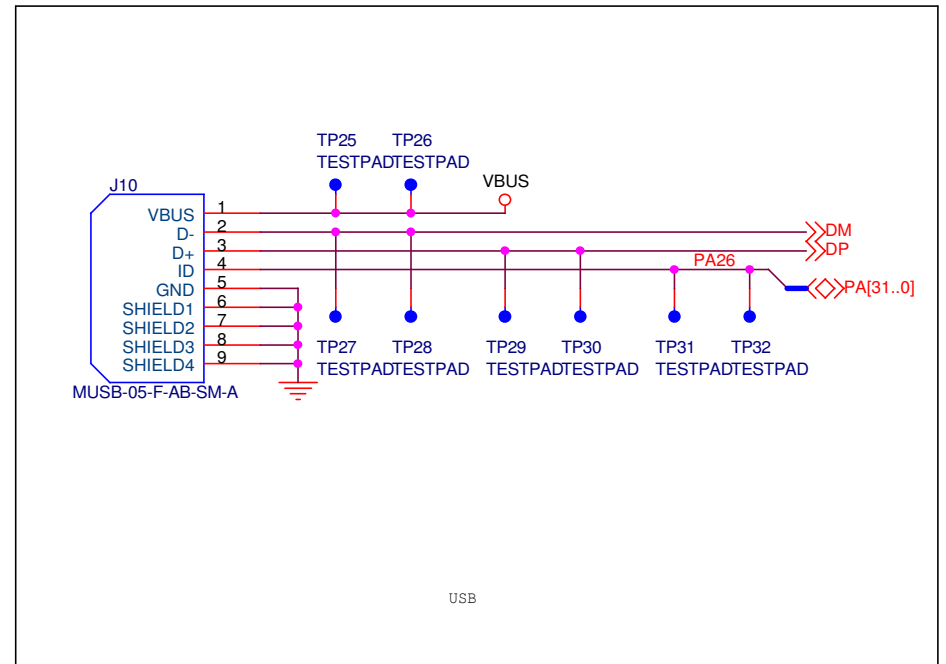
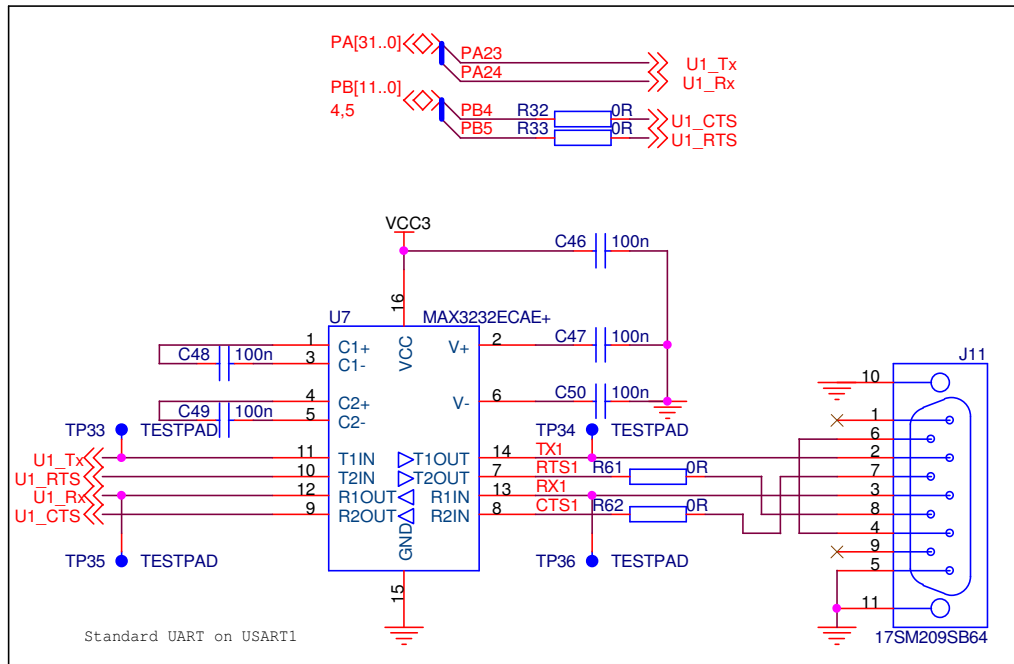


Title		ATEVK1101	
Size	Document Number	Rev	
A4	Power Supply		
Date:	Monday, April 02, 2007	Sheet	2 of 7



<Core Design>

ATMEL Nantes SA La Chantrerie BP 70602 44306 Nantes Cedex 3 FRANCE		
Title ATEVK1101		
Size A	Document Number SPI	Rev
Date: Monday, April 02, 2007	Sheet 3 of 7	



<Core Design>

ATMEL Nantes SA
La Chantrerie BP 70602
44306 Nantes Cedex 3
FRANCE



Title ATEVK1101

Size A4 Document Number

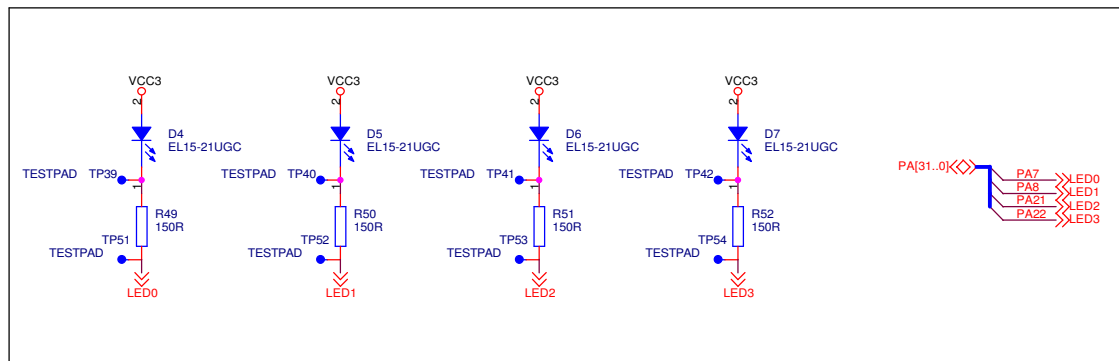
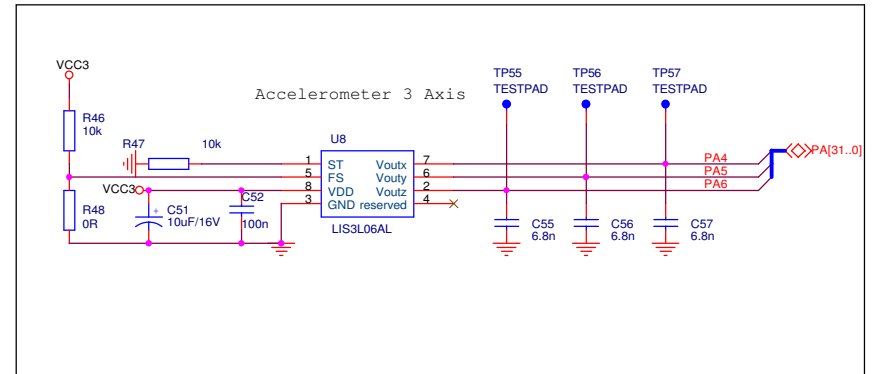
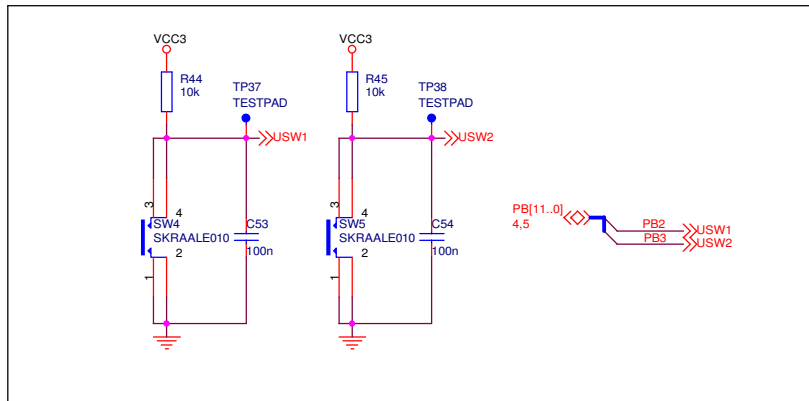
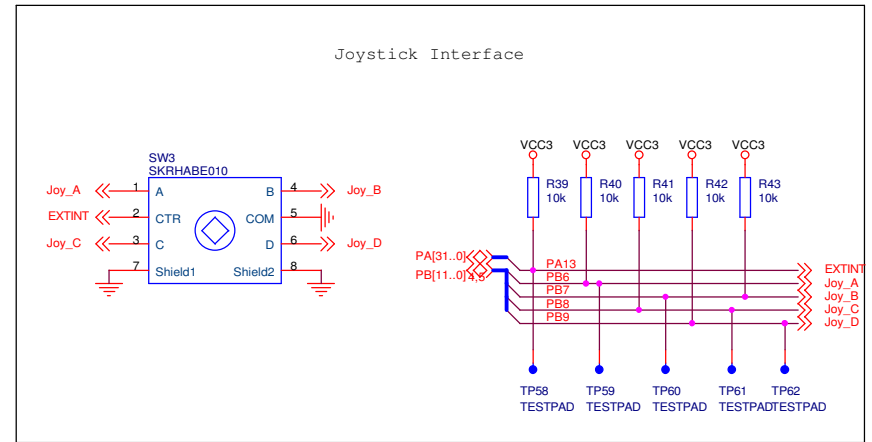
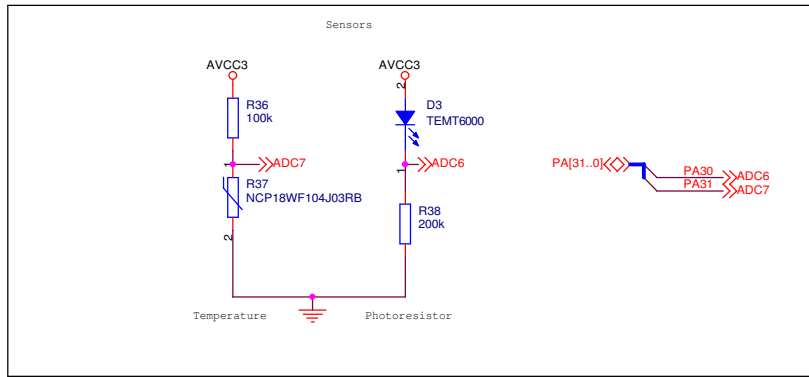
USART

Rev

Date: Monday, April 02, 2007

Sheet 4 of 7

1

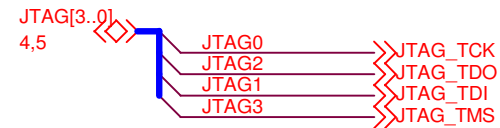
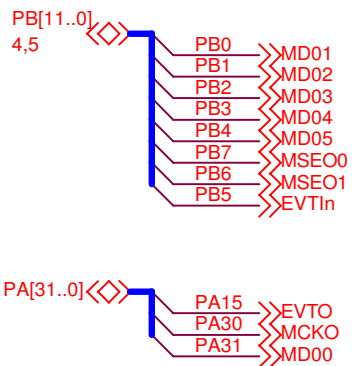
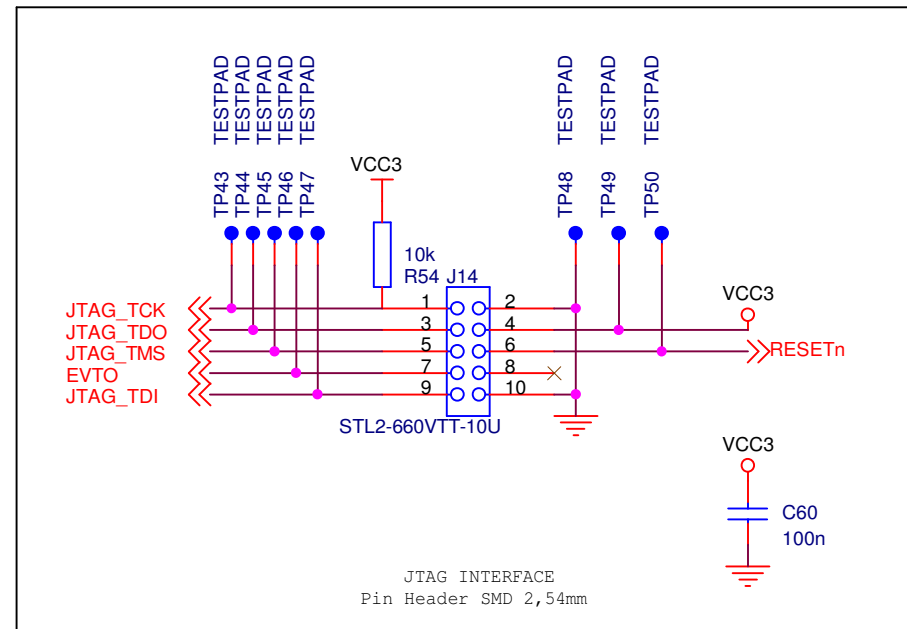
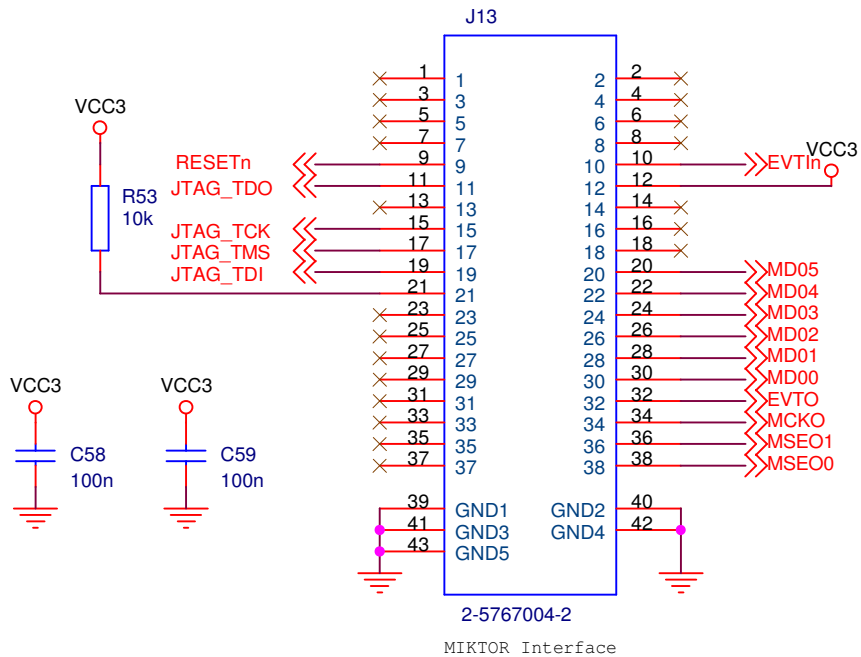


<Core Design>

ATMEL Nantes SA
La Chantellerie BP 70602
44306 Nantes Cedex 3
FRANCE



Title	ATEVK1101	
Size	Document Number	Rev
A3	SENSORS	
Date:	Monday, April 02, 2007	Sheet 5 of 7

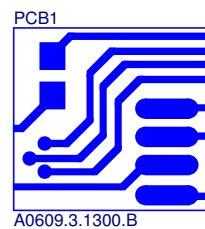
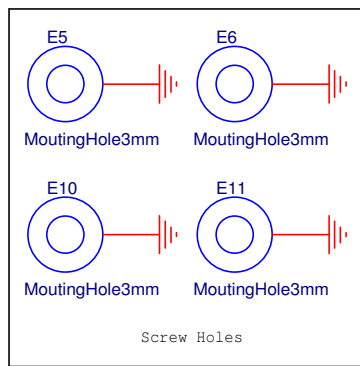
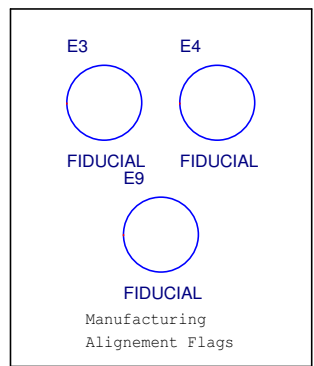
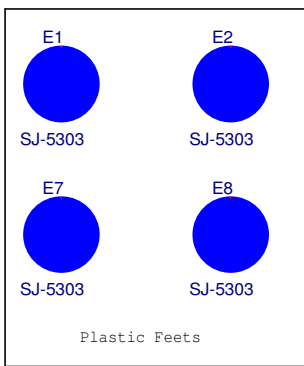
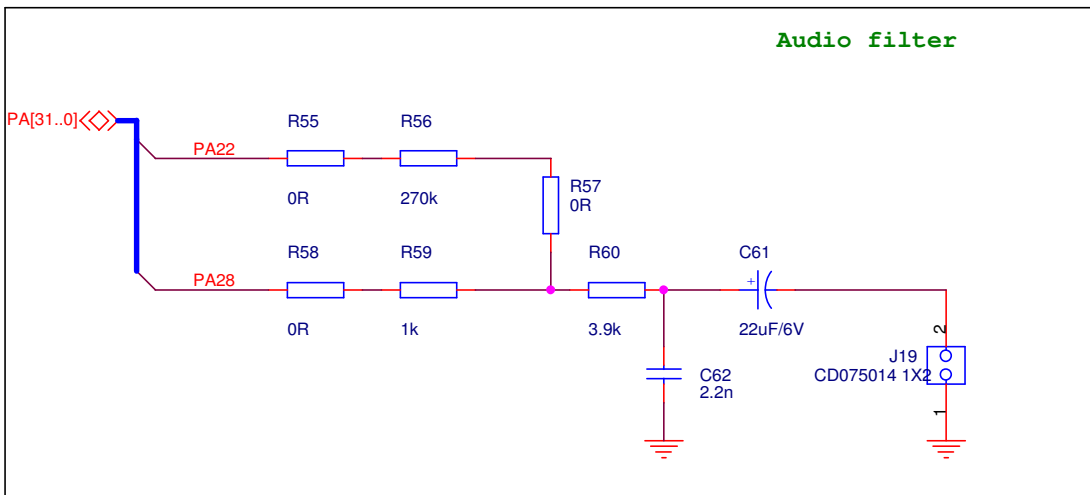
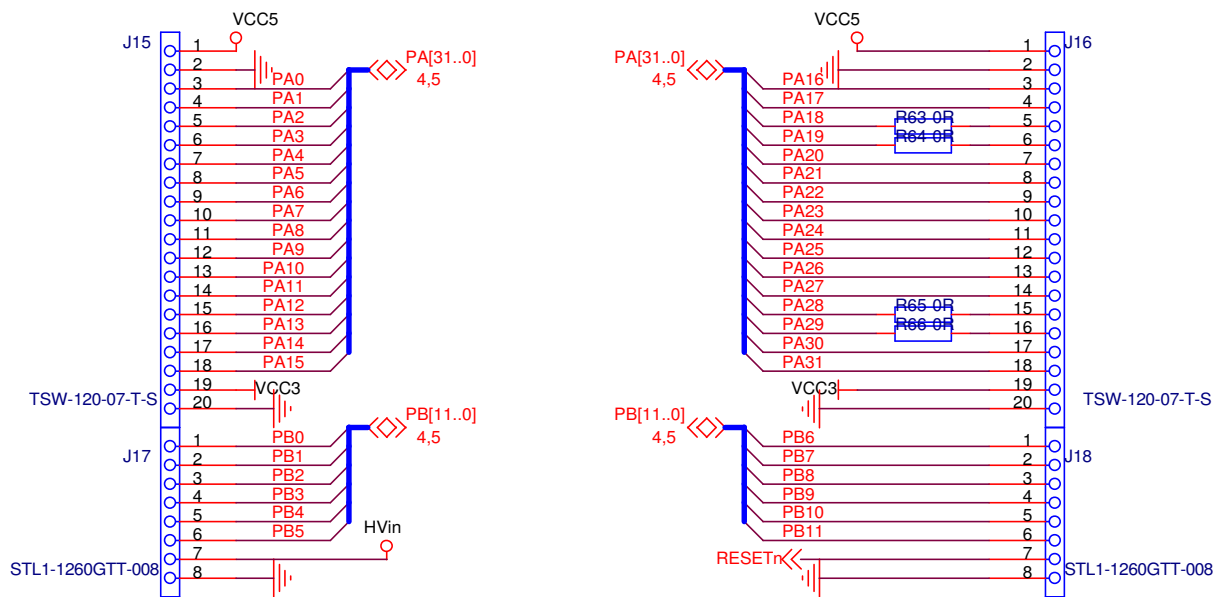


<Core Design>

ATMEL Nantes SA
La Chantrerie BP 70602
44306 Nantes Cedex 3
FRANCE



Title		
ATEVK1101		
Size	Document Number	Rev
A	DEBUG	
Date:	Monday, April 02, 2007	Sheet 6 of 7



<Core Design>

ATMEL Nantes SA
La Chantrerie BP 70602
44306 Nantes Cedex 3
FRANCE



Title ATEVK1101

Size A4	Document Number PROTOTYPING AREA	Rev
---------	--	-----

Date: Monday, April 02, 2007	Sheet 7 of 7
------------------------------	--------------