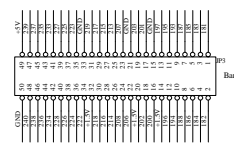
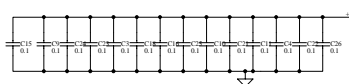
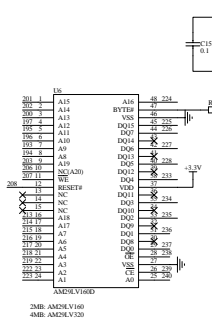
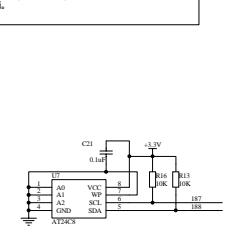


注意：该电路图版权归21世纪控制科技研究院（www.21cc-control.com）所有，仅供参考，任何人不得以任形式公布、发行该文档。

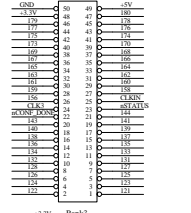
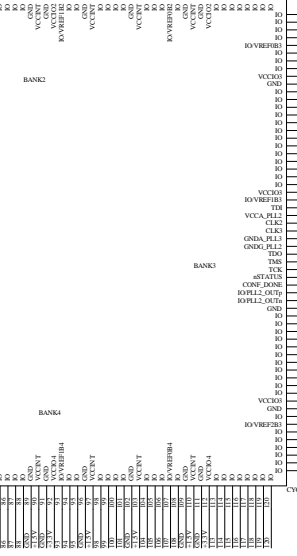
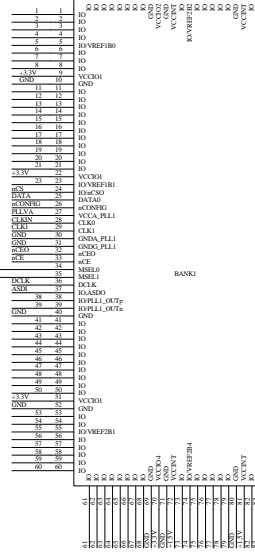
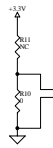
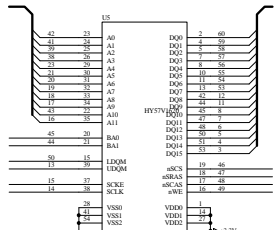
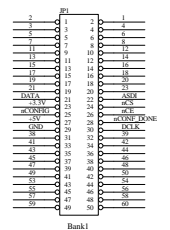
EPIC6和EPIC12不同的管脚

管脚号	EPIC6Q40C6	EPIC12Q40C6
80	BO	GND
81	BO	VCCINT
86	BO	GND
87	BO	VCCINT
88	BO	GND
89	BO	VCCINT
90	BO	GND
91	BO	VCCINT
92	BO	GND
93	BO	VCCINT
94	BO	GND
95	BO	VCCINT
96	BO	GND
97	BO	VCCINT
98	BO	GND
99	BO	VCCINT
100	BO	GND
101	BO	VCCINT
102	BO	GND
103	BO	VCCINT
104	BO	GND
105	BO	VCCINT
106	BO	GND
107	BO	VCCINT
108	BO	GND
109	BO	VCCINT
110	BO	GND
111	BO	VCCINT
112	BO	GND

注：使用EPIC6核心时必须注意将未用管脚在QuartusII中设置为输入，三态。



电源插座



EPIC12下载/JTAG口

