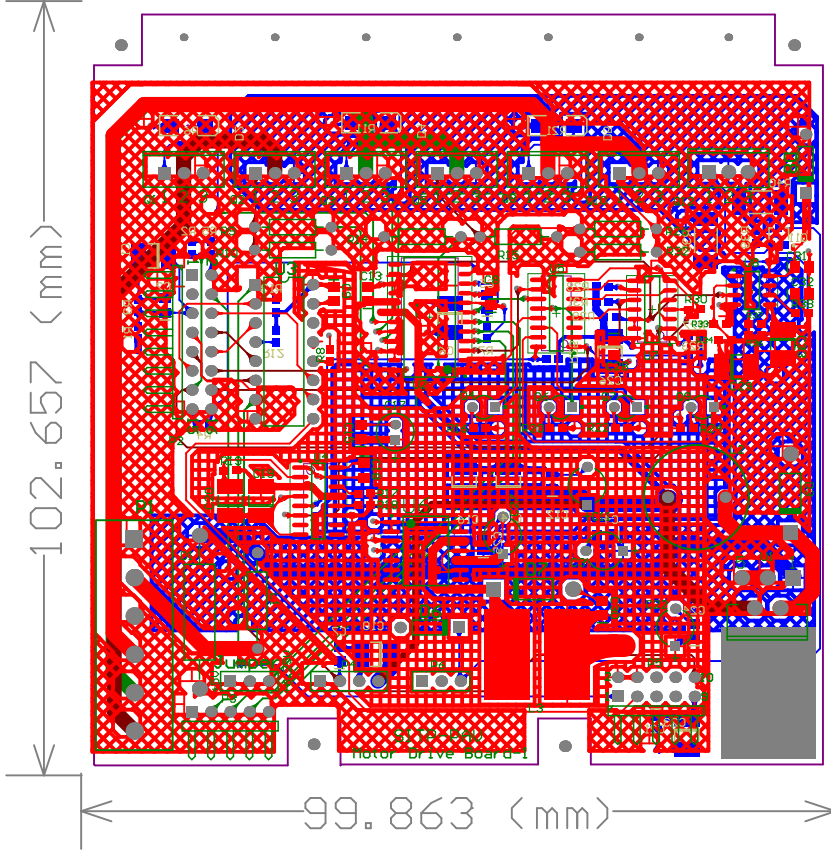
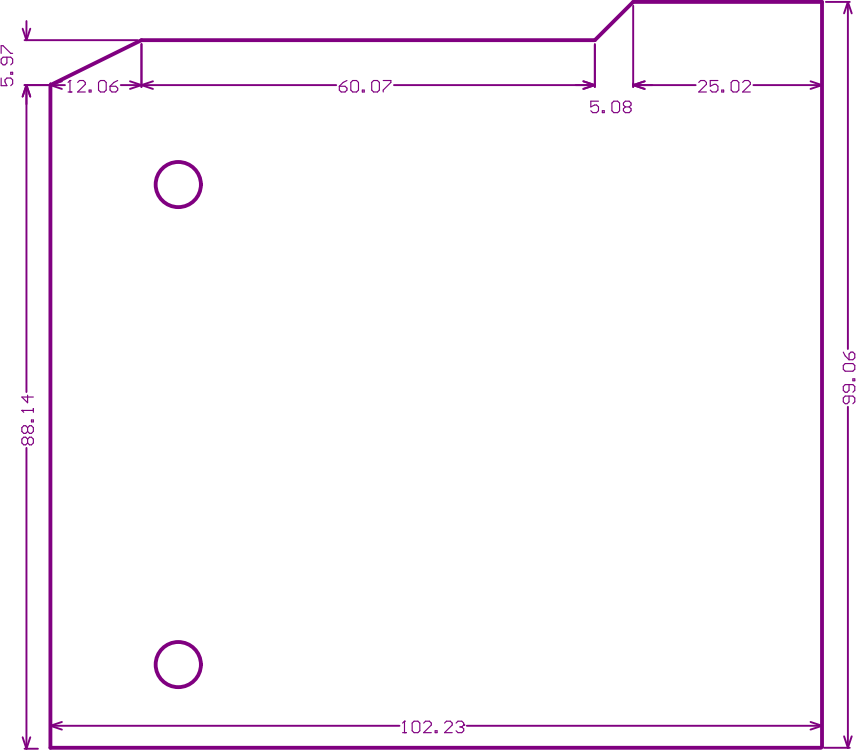


Size	Number	Revision
A2		
Date:	2008-10-16	Sheet of
File:	D:\important\motordrive.SchDoc	Drawn By:



Layer Stack Up Detail for: motor_drive_PCB, PcbDoc

- Layer Name
- Top Layer
- Ground
- MidLayer1
- MidLayer2
- Power
- Bottom Layer



Motor Drive Board

Component list

<Parameter Title not found>

Source Data From:

motor drive.PrjPCB

Project:

motor drive.PrjPCB

Variant:

None



Report Date: 2008-10-16 23:05:04
 Print Date: 16-Oct-08 11:05:14 PM

#	LibRef	#Column Name Error:Manufacturer	Column Name Error:Manufact	Column Name Error:Part	Description	Footprint	#Column Name Error:Package Reference	Quantity
1	Diode BAT17				Silicon RF Schottky Diode for Mixer Applications in the VHF/UHF Range	DO-35		1
2	D Zener				Zener Diode	DO-41		2
3	D Zener				Zener Diode	AXIAL-0.8		1
4	74ACT00SC				Quad 2-Input NAND Gate	M14A_L		1
5	Inductor				Inductor	101M inductance		1
6	Cap Pol1				Polarized Capacitor (Radial)	B		1
7	Cap Pol1				Polarized Capacitor (Radial)	CAPPR5-5x5		1
8	Cap Pol1				Polarized Capacitor (Radial)	CAPPR5-5x5		1
9	Cap Pol1				Polarized Capacitor (Radial)	CAPPR5-5x5		1
10	Cap Pol1				Polarized Capacitor (Radial)	CAPPR5-5x5		1
11	NPN				NPN Bipolar Transistor	SOT-23		1
12	Diode 1N914				High Conductance Fast Diode	DO-35A		1
13	Cap Pol3				Polarized Capacitor (Surface Mount)	C0805		1
14	Cap Pol3				Polarized Capacitor (Surface Mount)	C0805		11
15	Cap Pol3				Polarized Capacitor (Surface Mount)	1812		2
16	Cap Pol3				Polarized Capacitor (Surface Mount)	1812		1
17	Cap Pol3				Polarized Capacitor (Surface Mount)	1812		2
18	Cap Pol3				Polarized Capacitor (Surface Mount)	1812		2
19	Cap Pol3				Polarized Capacitor (Surface Mount)	1812		1
20	Cap Pol3				Polarized Capacitor (Surface Mount)	C0805		1
21	Cap Pol3				Polarized Capacitor (Surface Mount)	C0805		1
22	Cap Pol3				Polarized Capacitor (Surface Mount)	1812		1
23	Cap Pol3				Polarized Capacitor (Surface Mount)	C0805		3
24	Header 3				Header, 3-Pin	HDR1X3		2
25	Header 4				Header, 4-Pin	HDR1X4		1
26	Header 5H				Header, 5-Pin, Right Angle	HDR1X5H		1
27	Header 5X2H				Header, 5-Pin, Dual row, Right Angle	HDR2X5H		1
28	Header 6				Header, 6-Pin	POWER-6		1
29	Header 8X2H				Header, 8-Pin, Dual row, Right Angle	HDR2X8H		1
30	Inductor Iron				Magnetic-Core Inductor	AXIAL-0.5		1
31	IRF530N				HEXFET Power MOSFET	TO-220AB		3
32	IRF9530N				HEXFET Power MOSFET	TO-220AB		3
33	LED0				Typical INFRARED GaAs LED	LED		1
34	LED0				Typical INFRARED GaAs LED	LED		2
35	LED0				Typical INFRARED GaAs LED	LED		1
36	LM2574M-5.0				Simple Switcher 0.5A Step Down Voltage Regulator	M14B_N		1
37	LM2575T-12				Simple Switcher 1A Step Down Voltage Regulator	T05D		1
38	LM2904D				Dual Operational Amplifier	D008_L		1
39	MC74HC4538AD				Dual Precision Monostable Multivibrator (Retriggerable, Resettable)	751B-05_N		1
40	MCU33035DW					751E-04_L		1
41	Inductor				Inductor	Axial 0.3 inductance		1
42	Res2				Resistor	AXIAL-0.4		3
43	Res2				Resistor	AXIAL-0.4		3
44	Res3				Resistor	J1-0603		5
45	Res3				Resistor	J1-0603		2
46	Res3				Resistor	J1-0603		1
47	Res3				Resistor	J1-0603		1
48	Res3				Resistor	6332[2512]		1
49	Res3				Resistor	J1-0603		4
50	Res3				Resistor	6332[2512]		1
51	Res3				Resistor	J1-0603		1
52	Res3				Resistor	J1-0603		2
53	Res3				Resistor	J1-0603		6
54	Res3				Resistor	J1-0603		3
55	Res3				Resistor	J1-0603		3
56	Res3				Resistor	J1-0603		1
57	Res3				Resistor	J1-0603		1
58	Res3				Resistor	J1-0603		2
59	Diode				Default Diode	DO214		3
60	SN75172N				Quadruple Differential Line Driver	N016		1
61	Cap Semi				Capacitor (Semiconductor SIM Model)	1812		2
62	TIP122				Darlington Silicon Power NPN Transistor, 8 Amp, 100 Volts and 65 Watts	TO-220FP		1
63	ULN2003AD				Darlington Transistor Array	D016_N		1

Approved

Notes

111